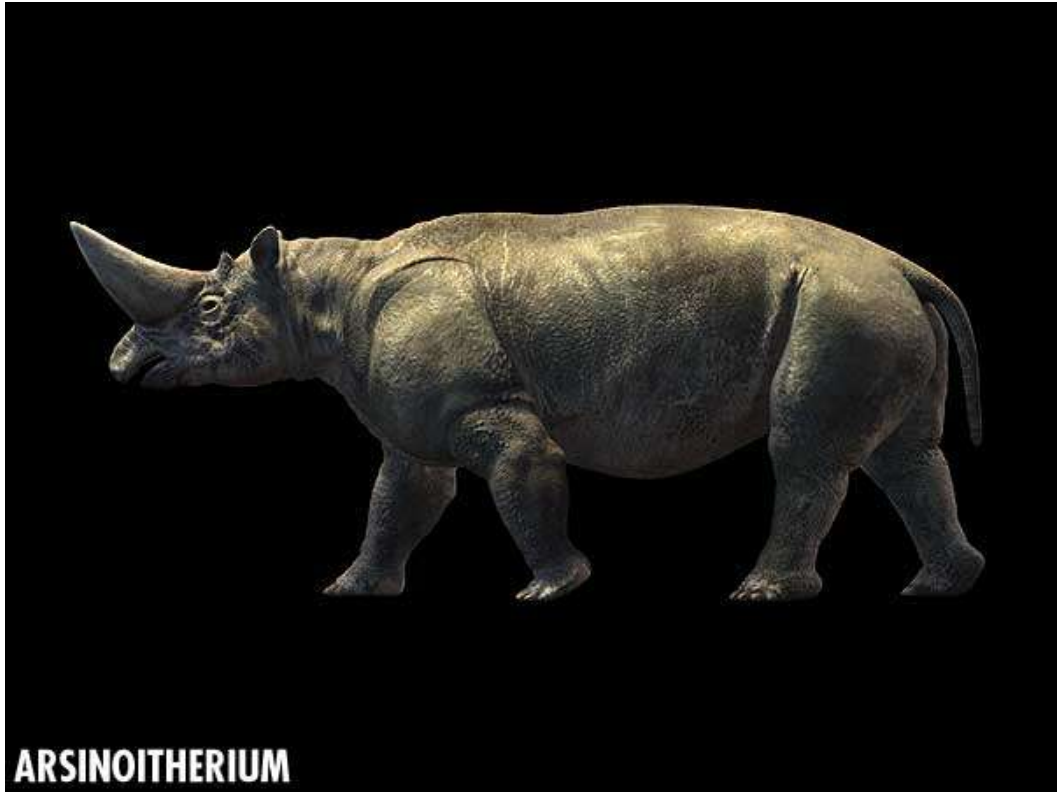
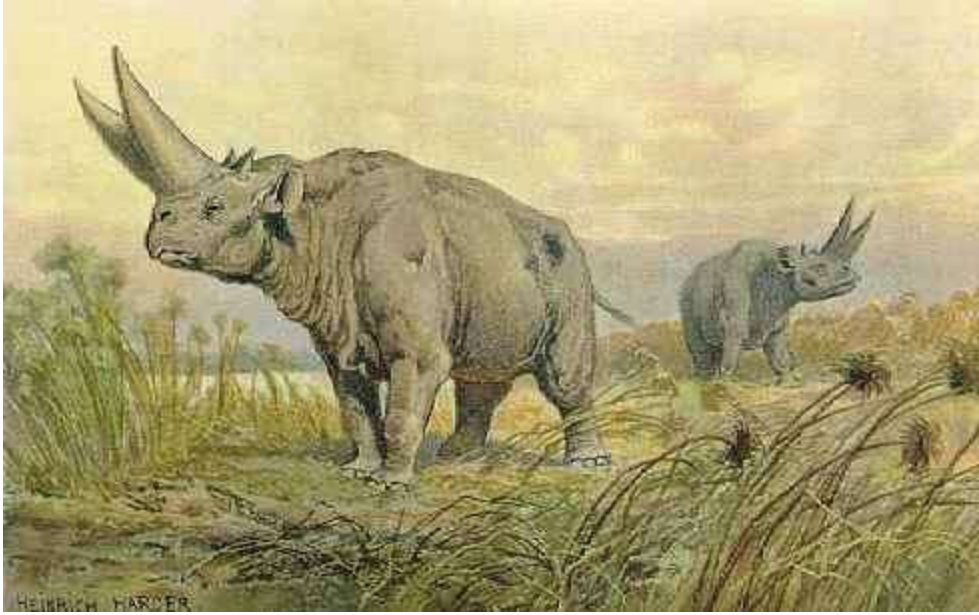


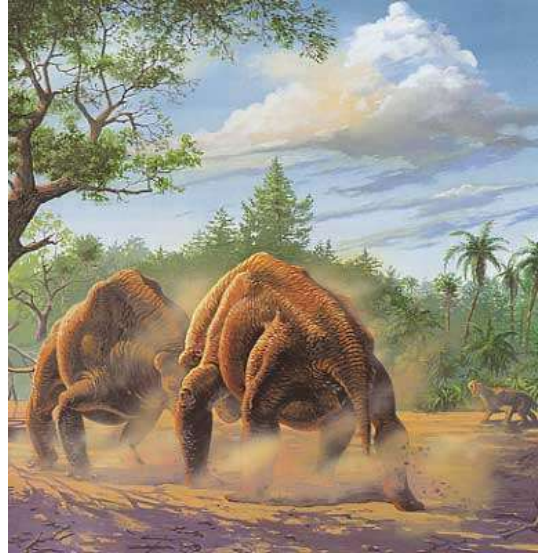
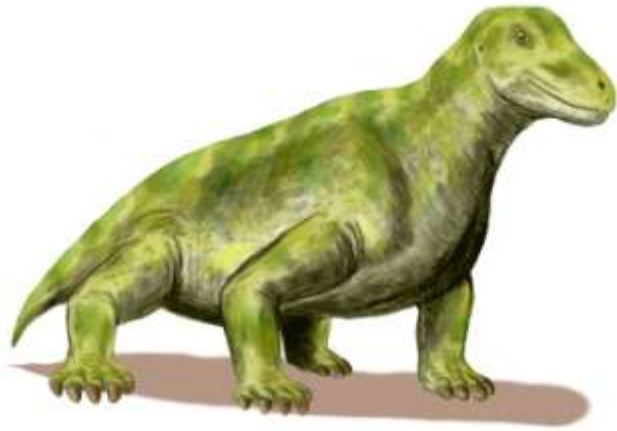
Alticamelus



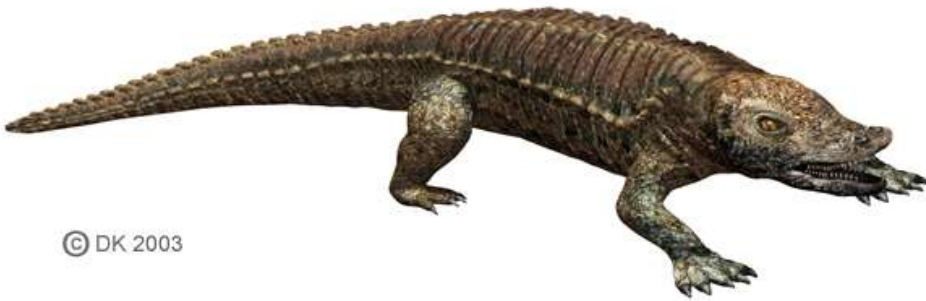
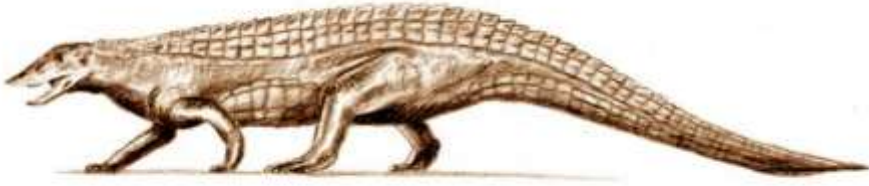
ARSINOITHERIUM



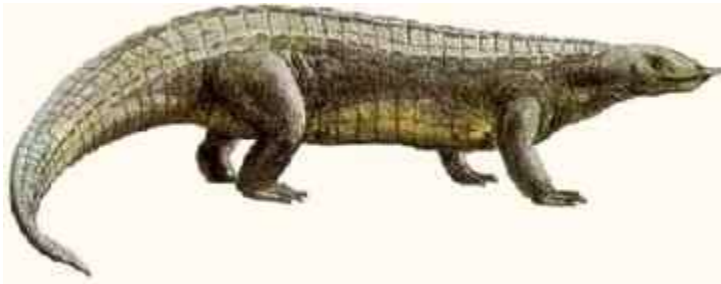
Arsinoitherium



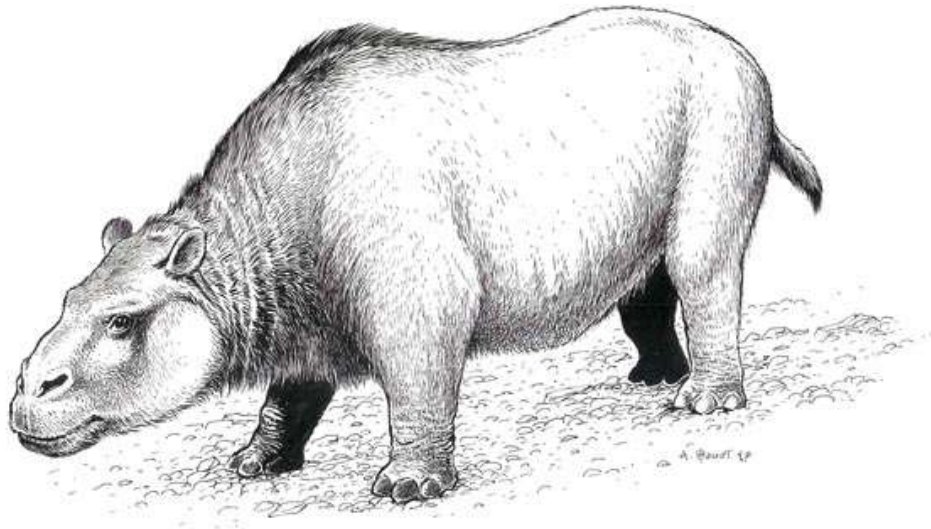
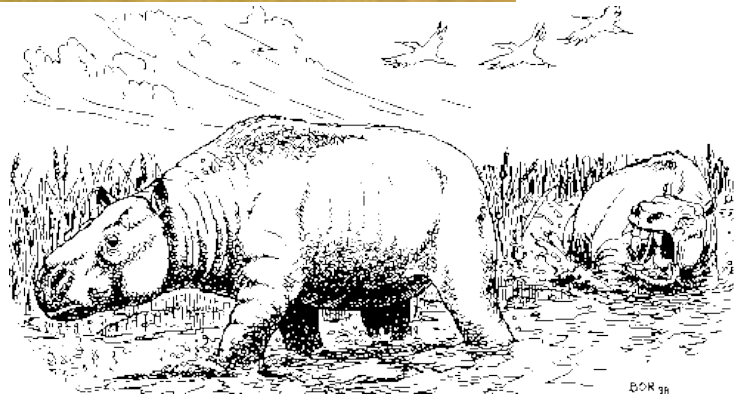
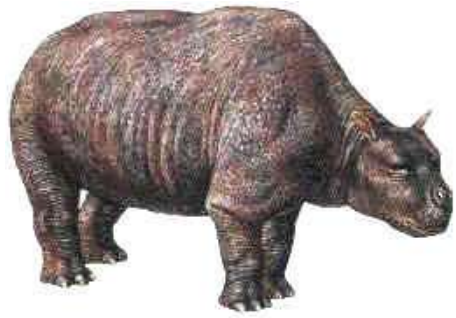
Moschops



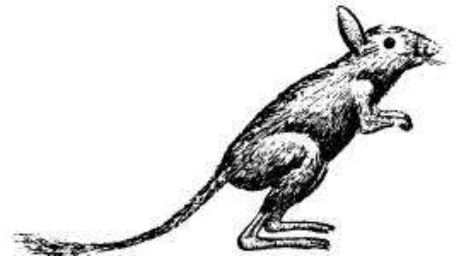
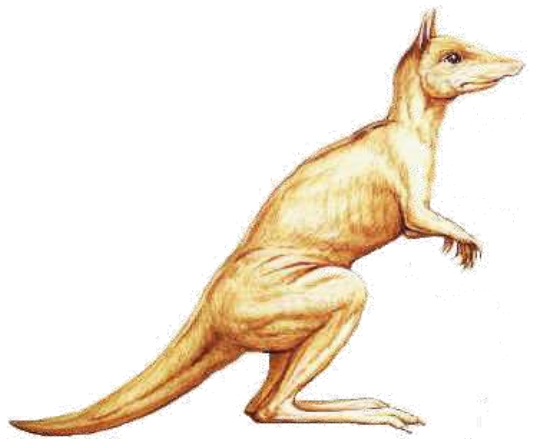
© DK 2003



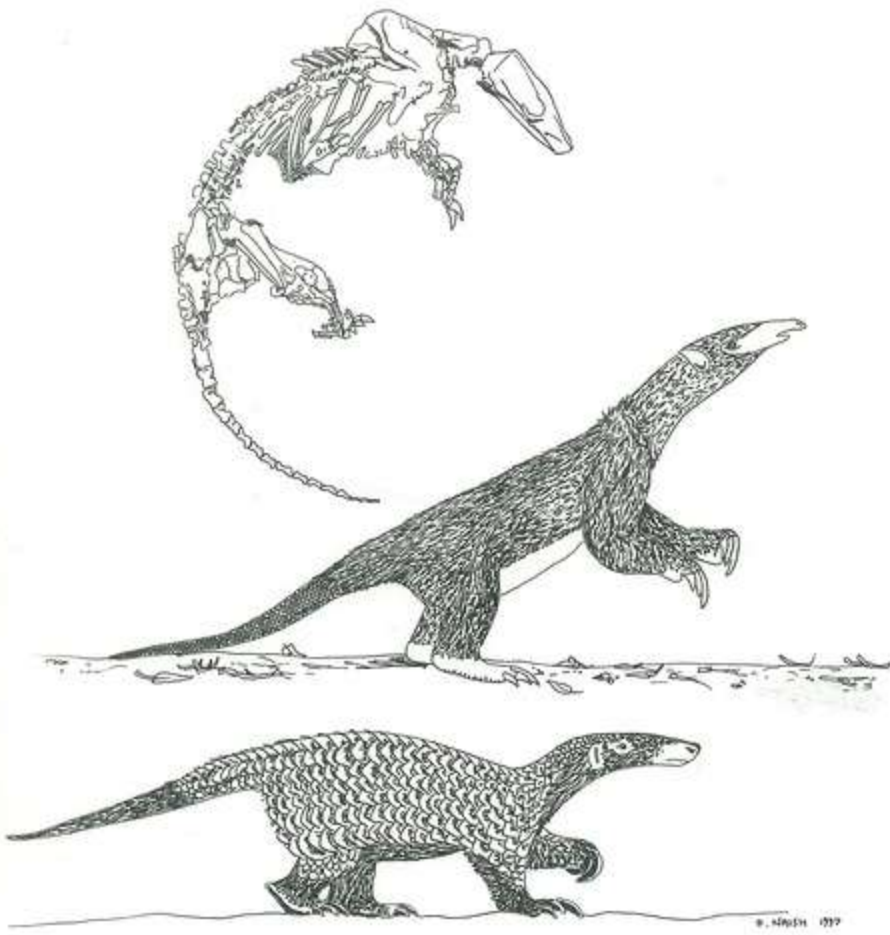
Stagonolepis



Toxodon

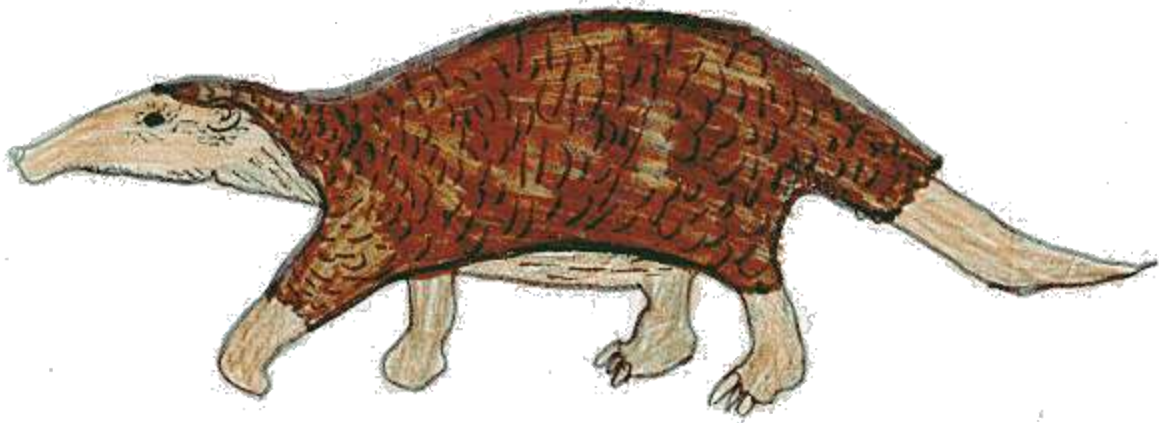


Argyrolagus



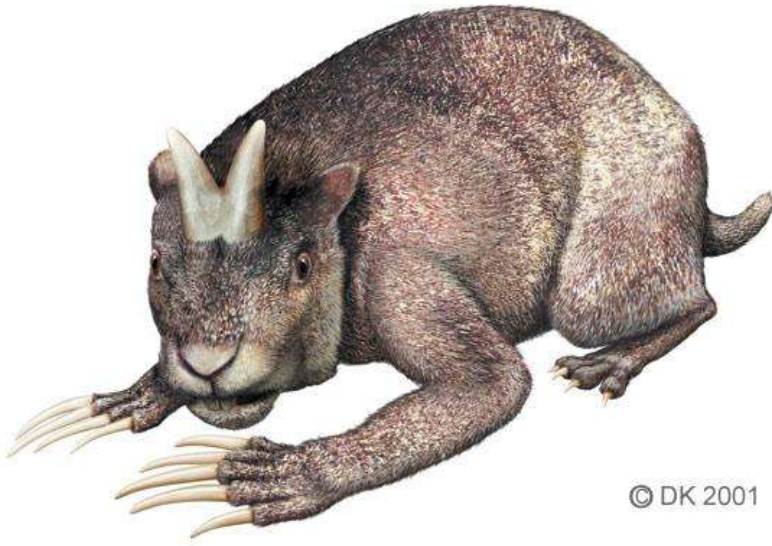
Eomanis





(Pangolin – breeding ball)

Eomanis



© DK 2001

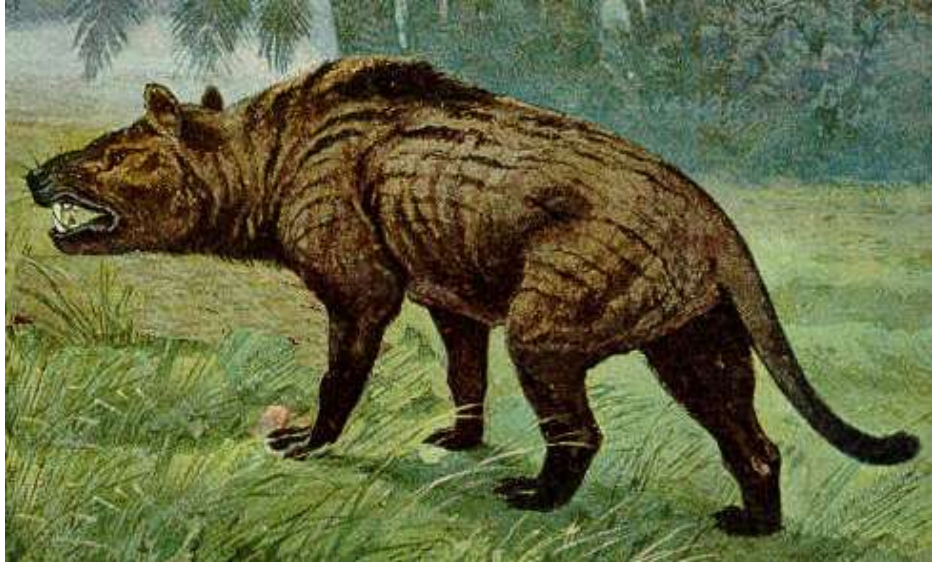
Epigaulus





Hyaenodon



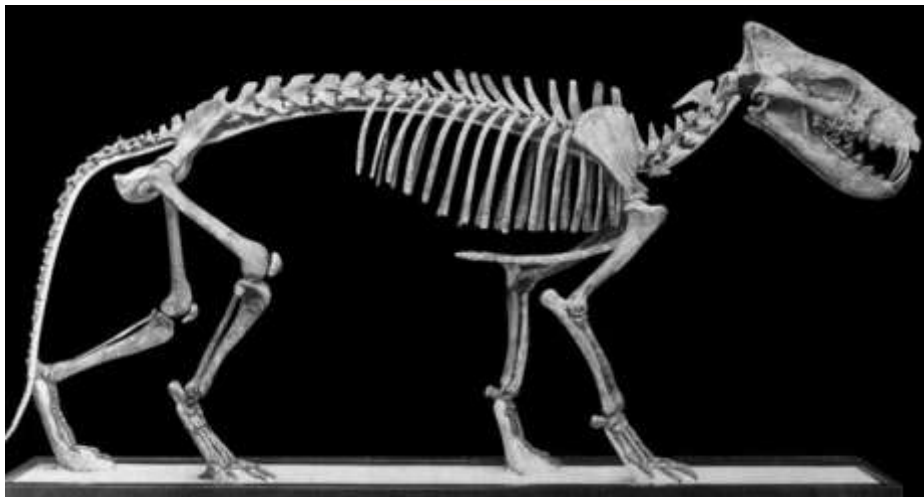


Hyaenodon

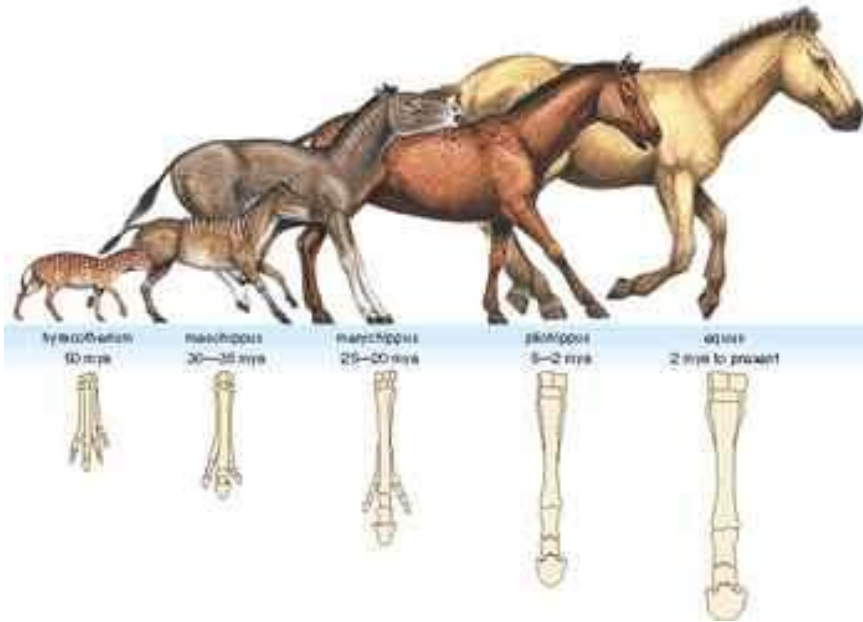
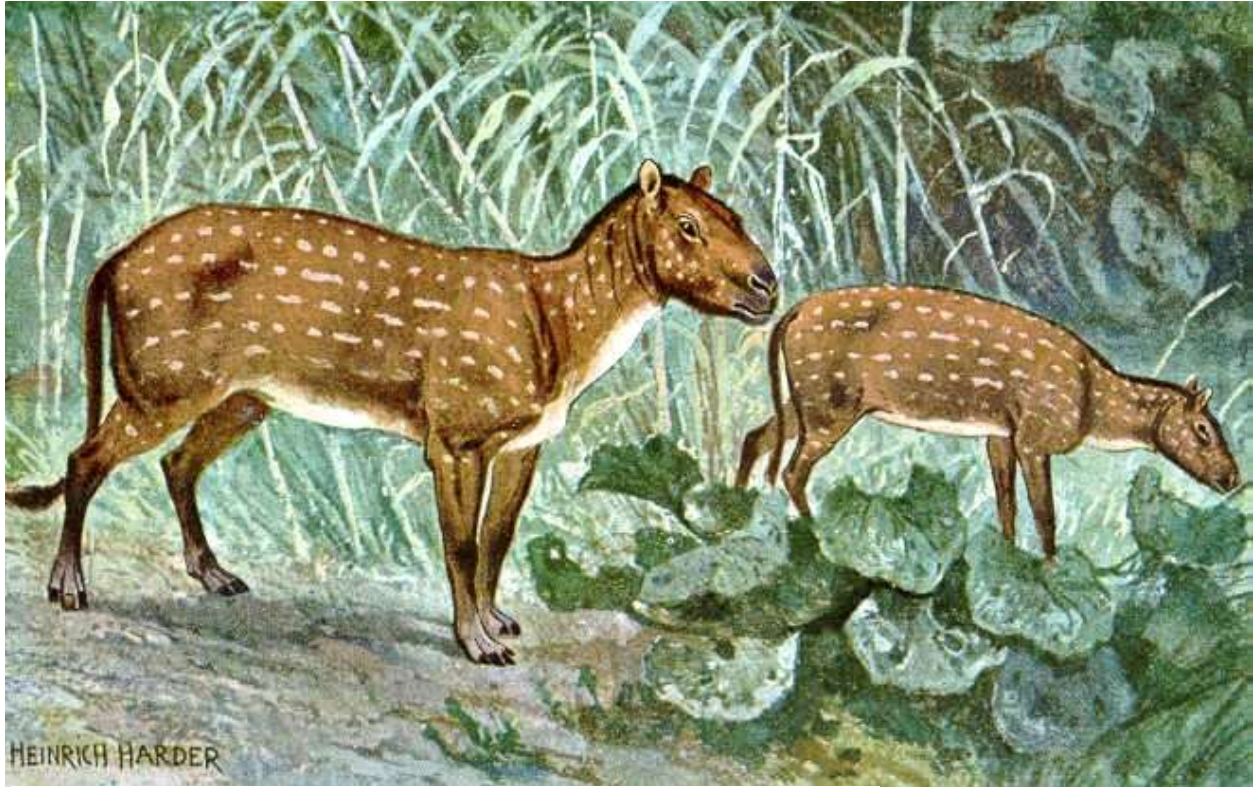


***Hyaenodon* spp.¹ 1853**
creodont mammal
Oligocene (38-23 million years ago)

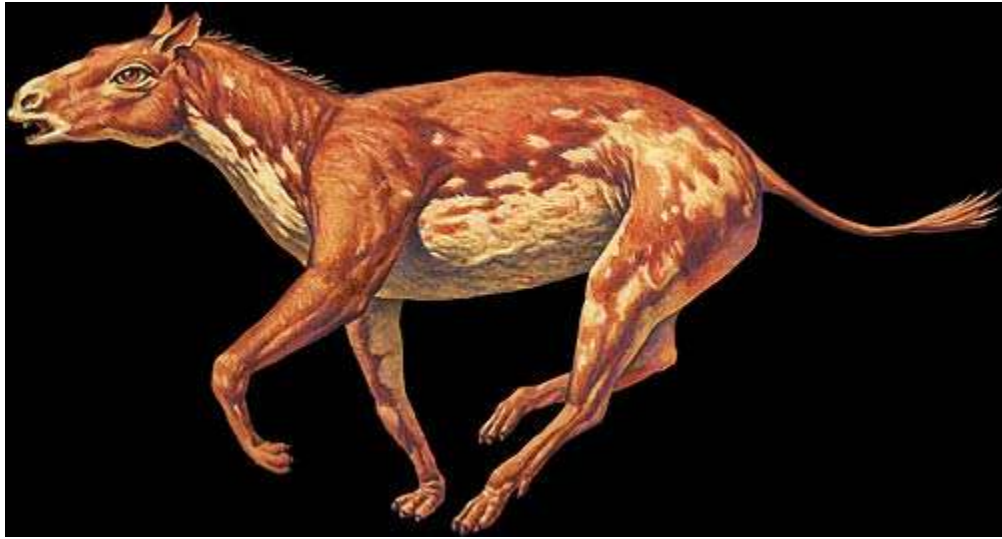




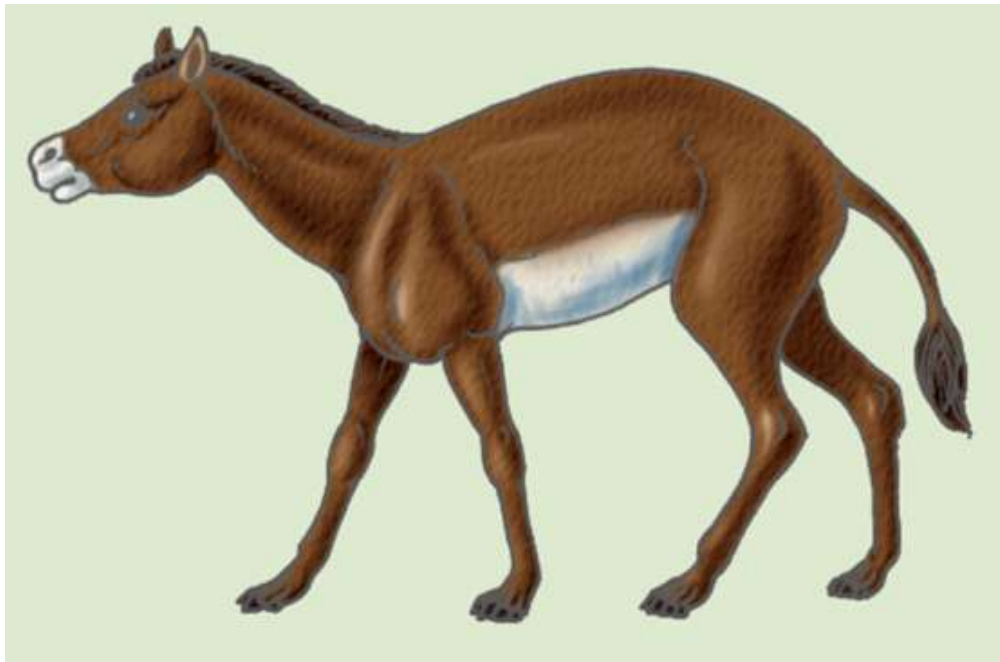
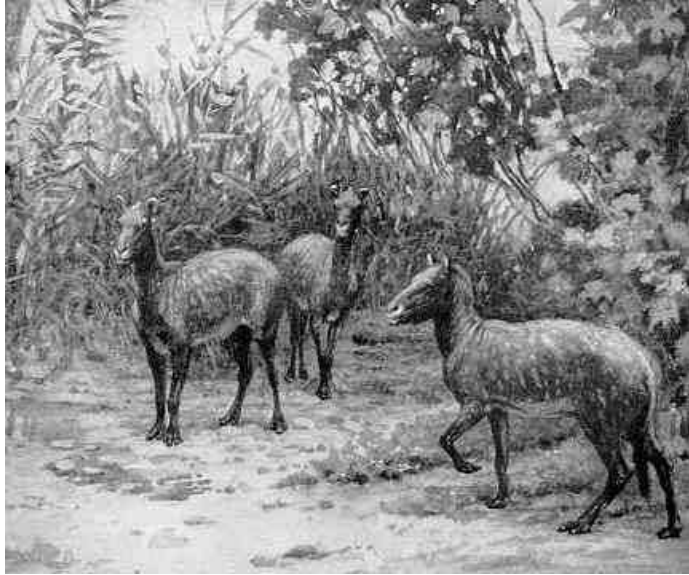
Hyaenodon



Hyracotherium

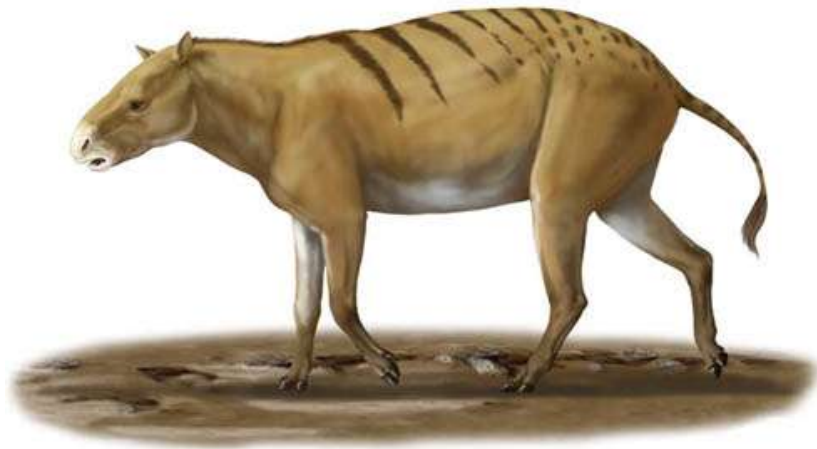


Hyracotherium

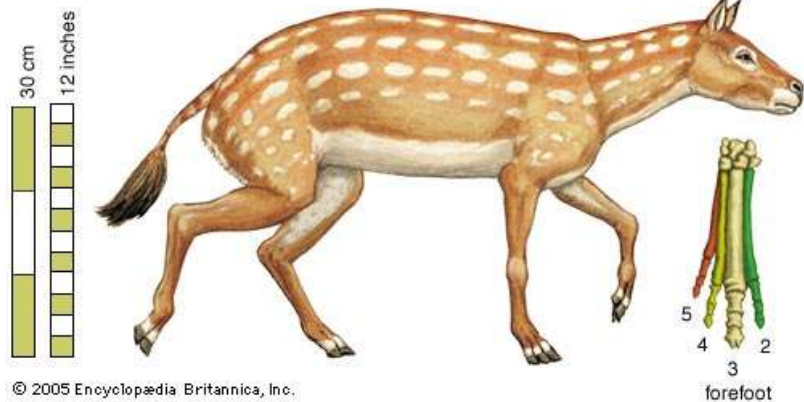


Hyracotherium





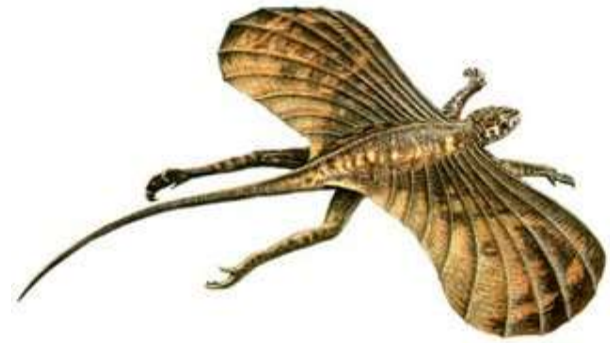
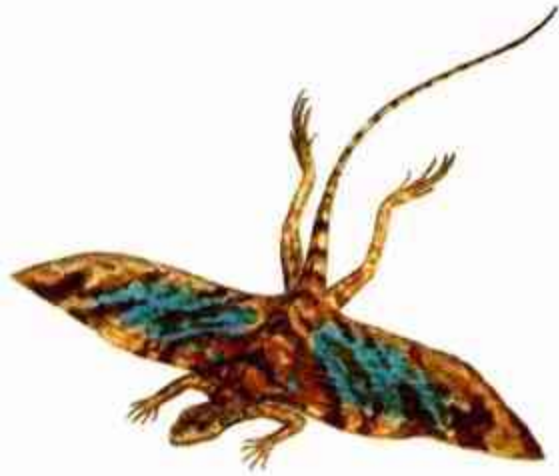
dawn horse (*Hyracotherium*)



© 2005 Encyclopædia Britannica, Inc.

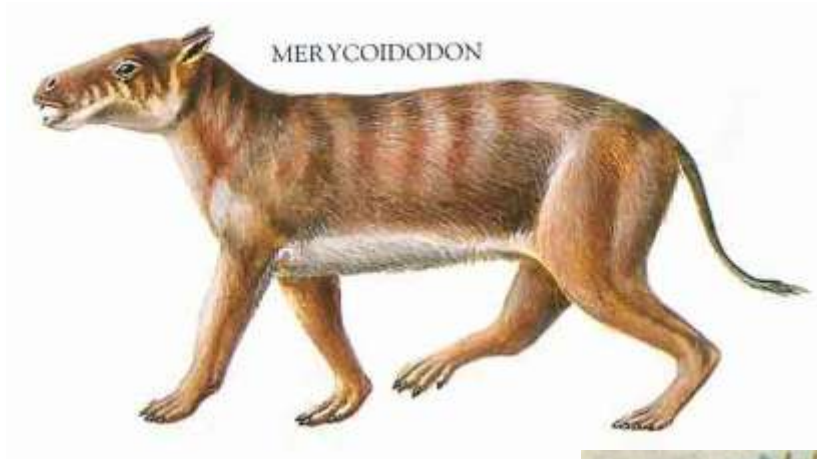
Hyracotherium



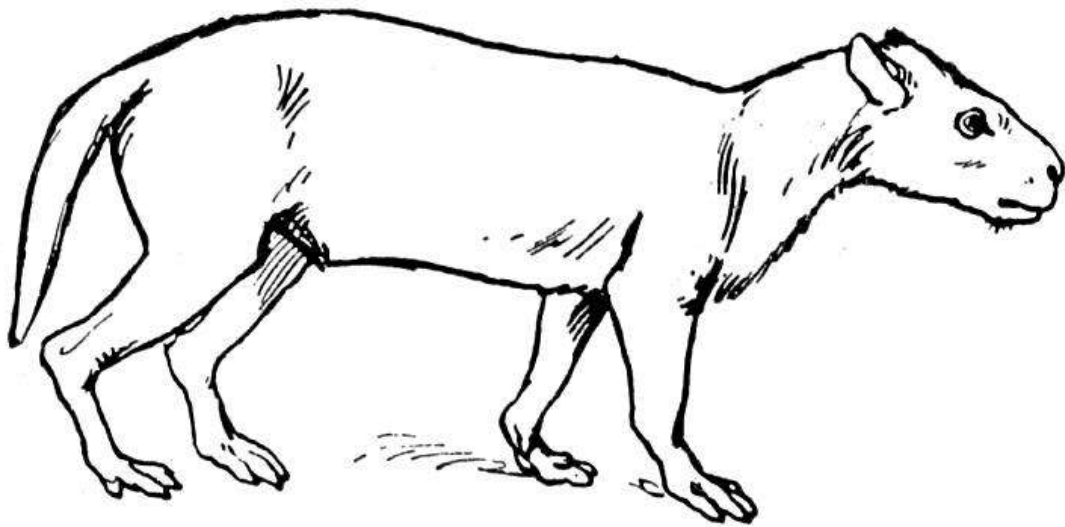


Kuehneosaurus

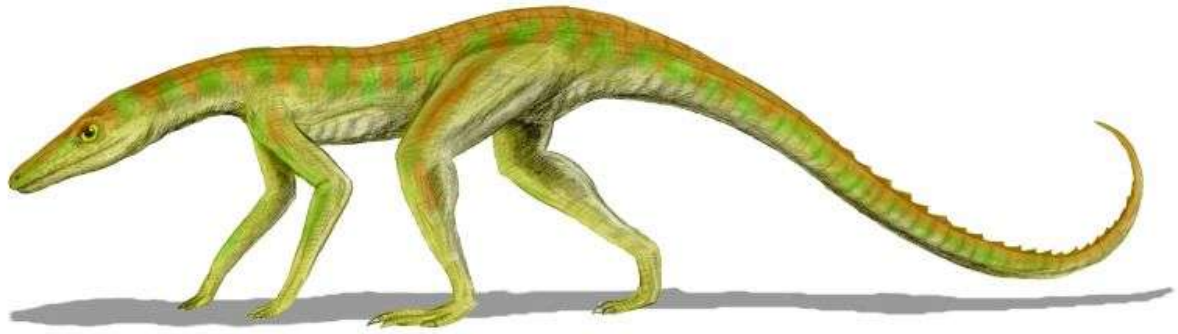




*Merycoidodon culbertsonii*¹ 1848
oreodont mammal
Oligocene (38-23 million years ago)



Merycoidodon



Terrestriisuchus