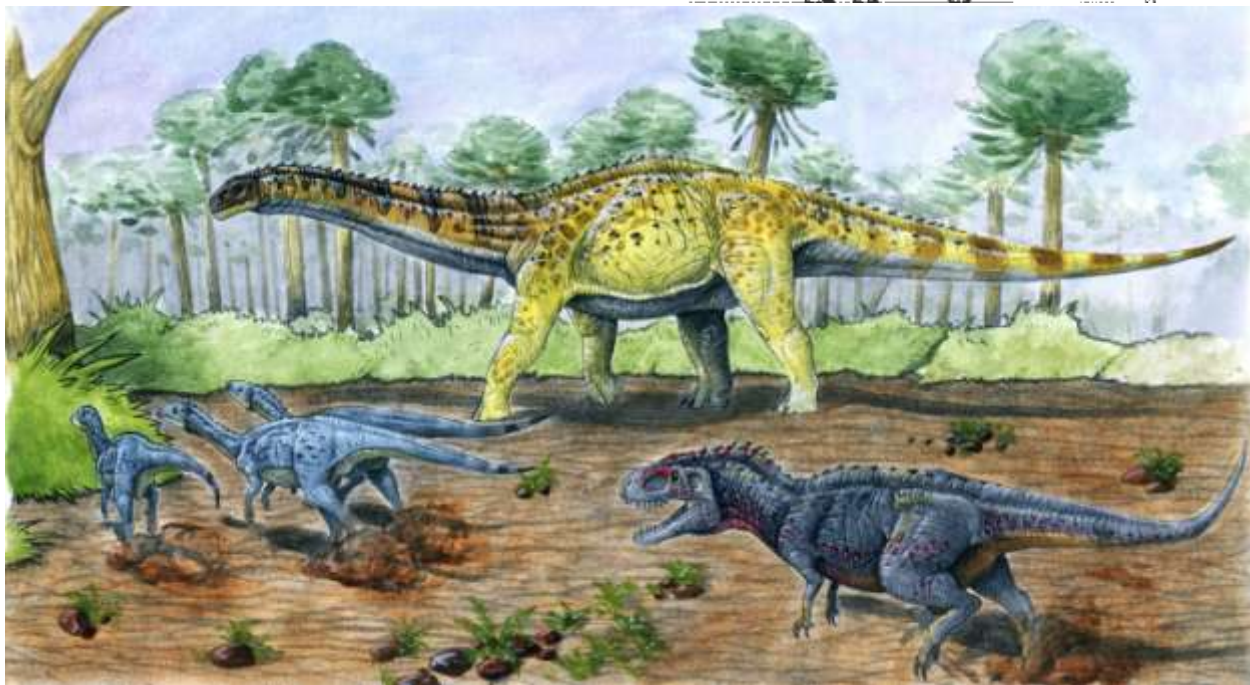
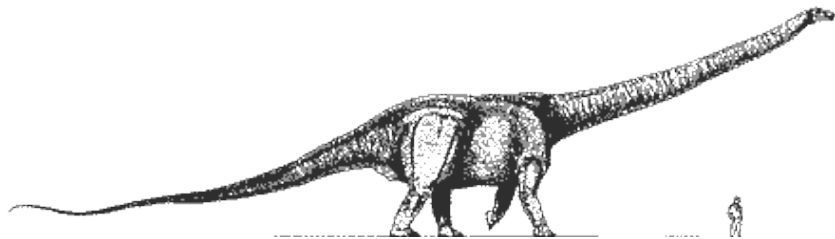
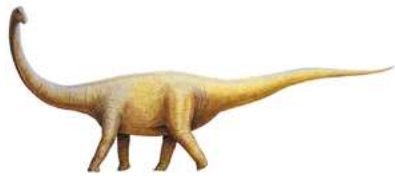
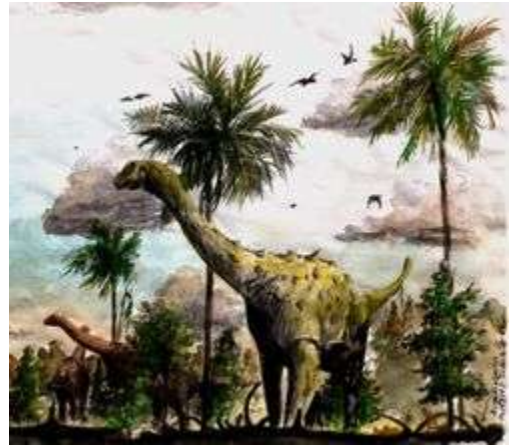
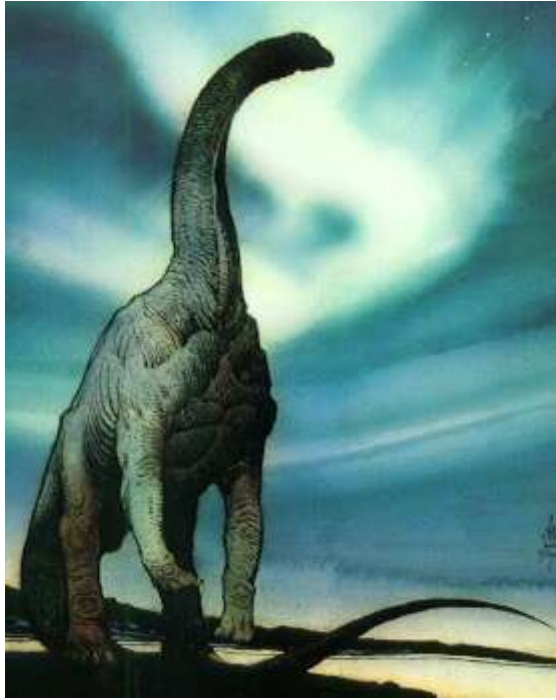
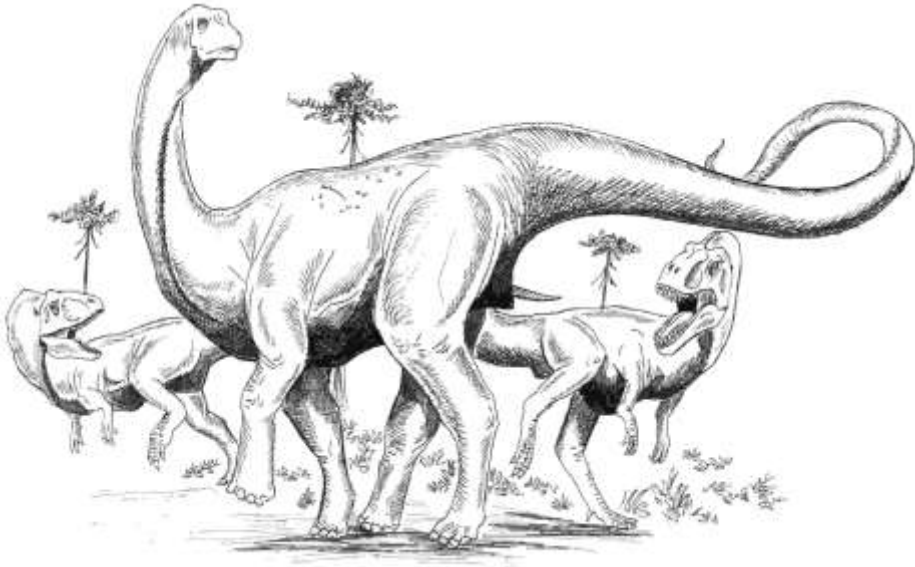
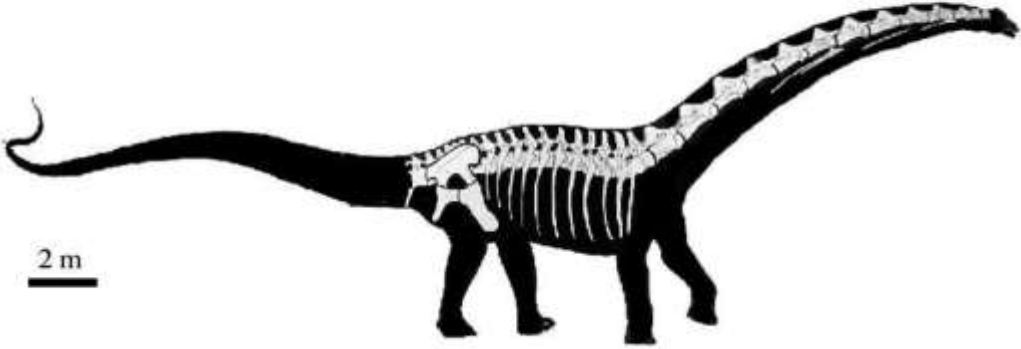


Titanosaur





Titanosaur



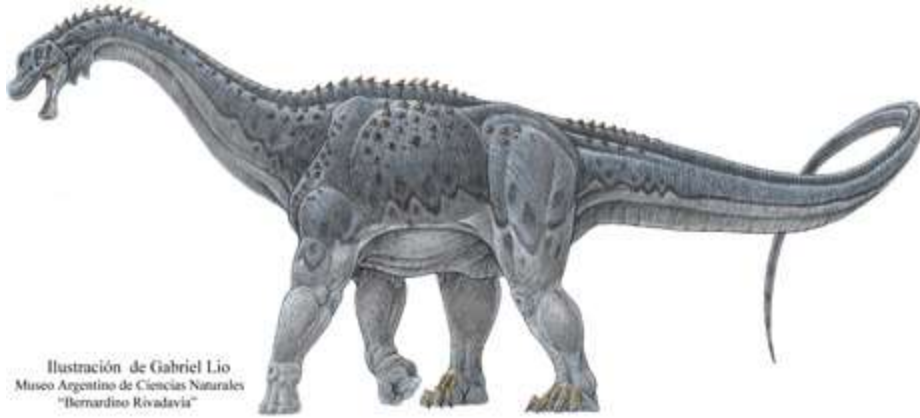


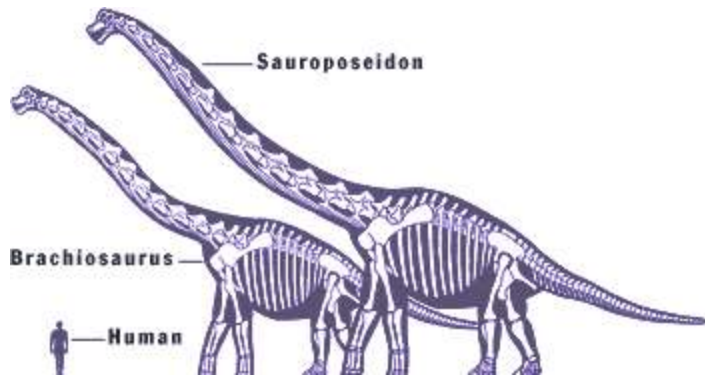
Ilustración de Gabriel Lio  
Museo Argentino de Ciencias Naturales  
"Bernardino Rivadavia"

Titanosaur



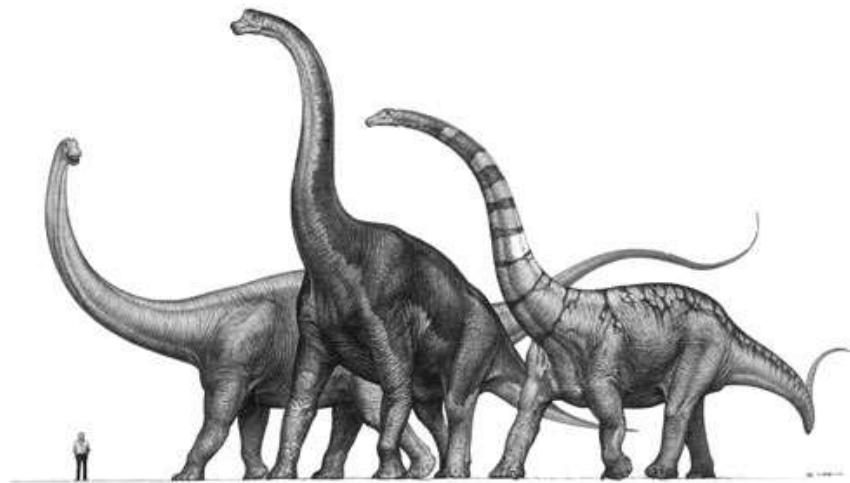
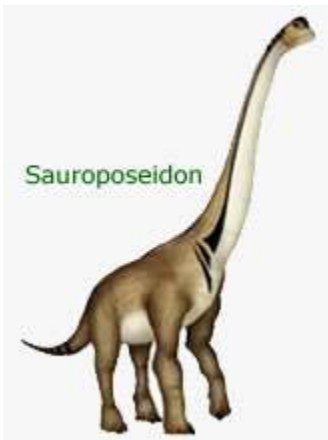
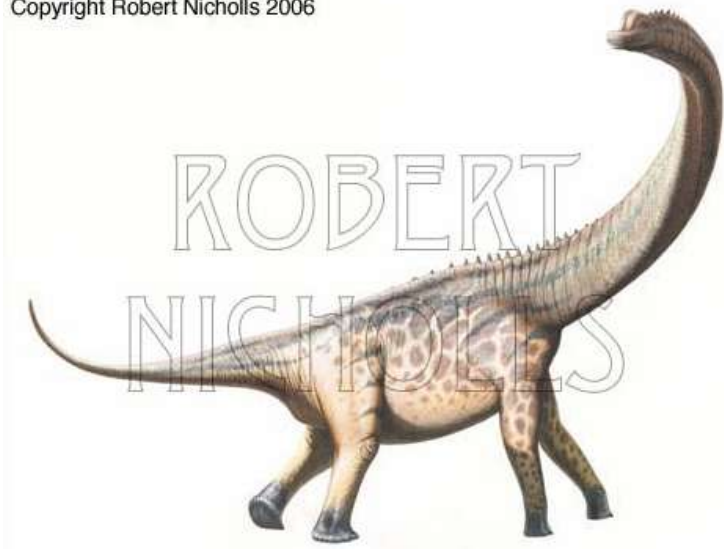
Sauroposeidon





Sauroposeidon

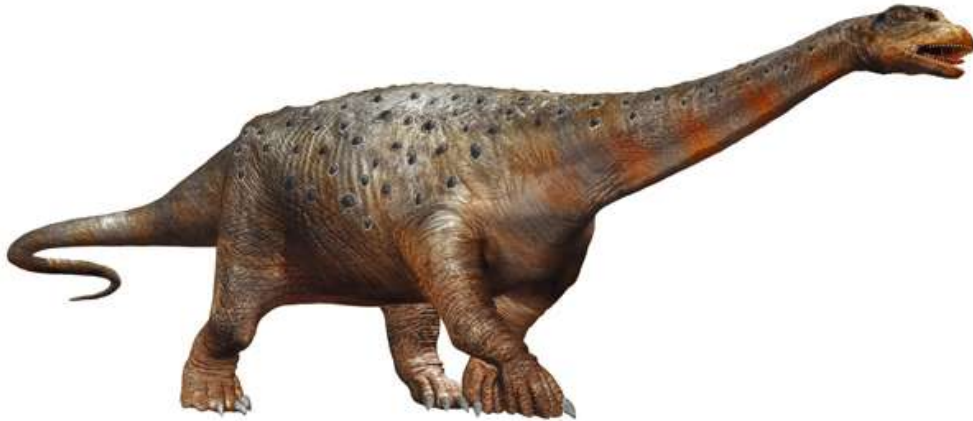
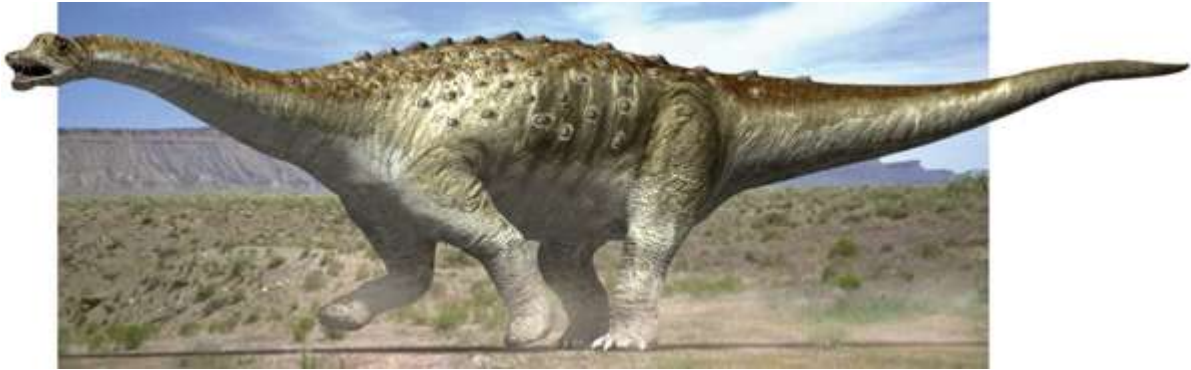
Copyright Robert Nicholls 2006

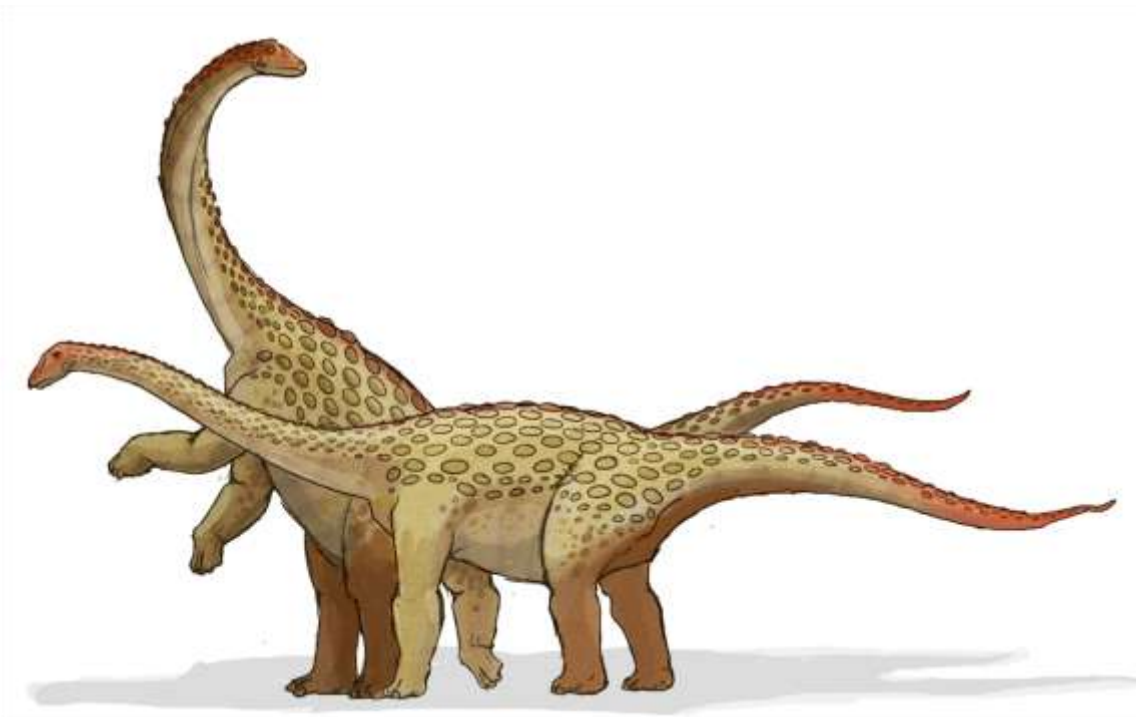




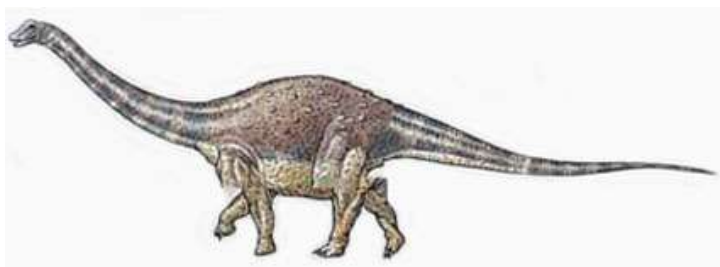


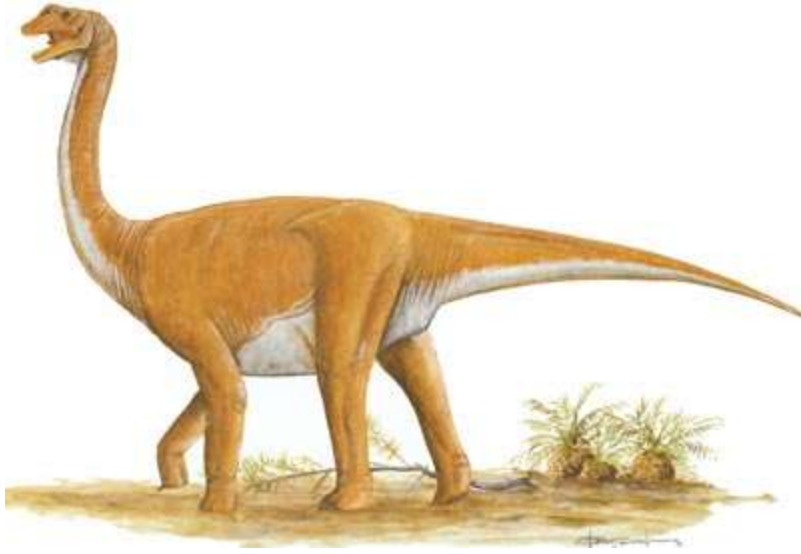
Saltasaurus



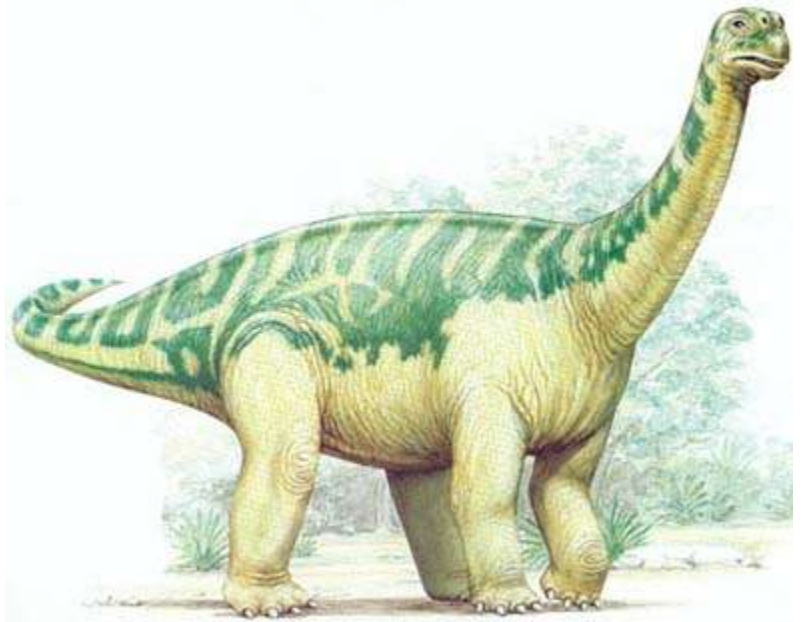
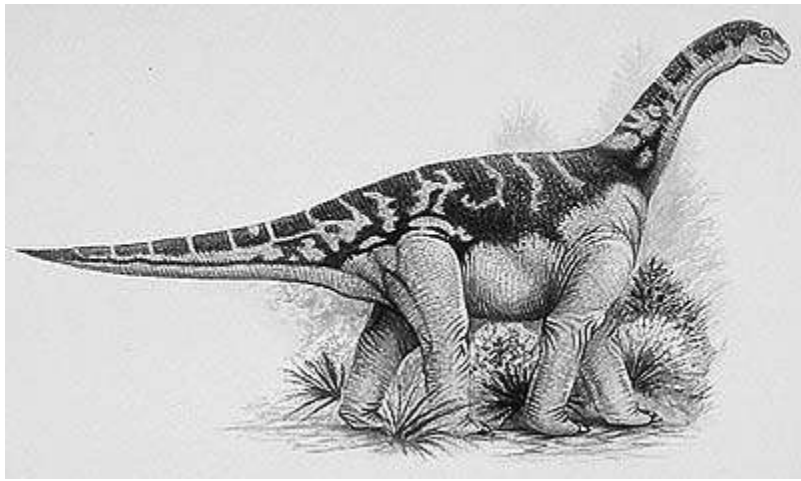


Saltasaurus





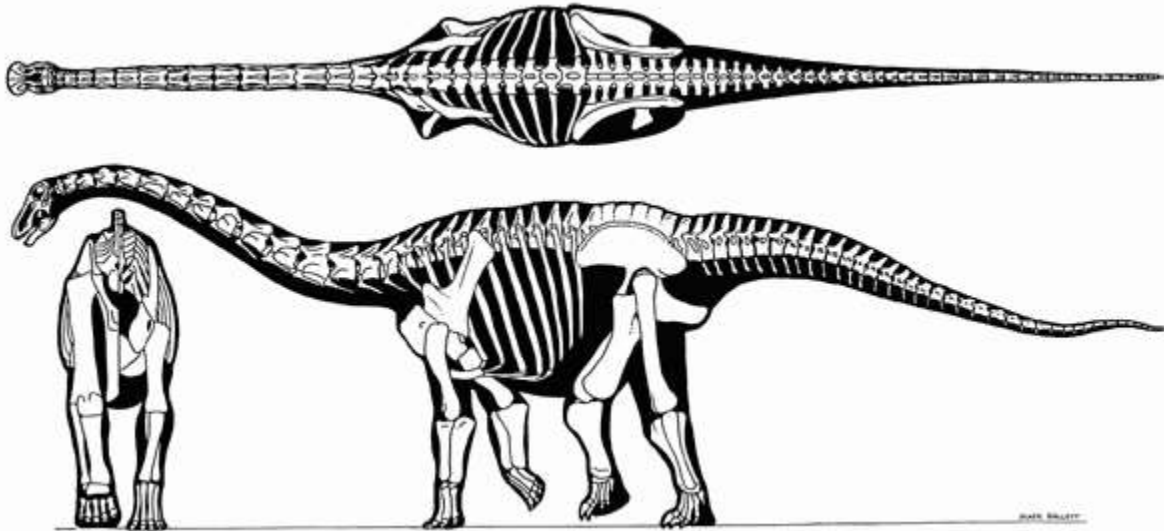
Opisthocoelicaudia

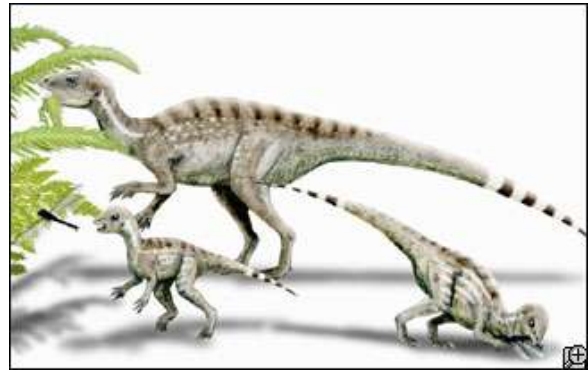
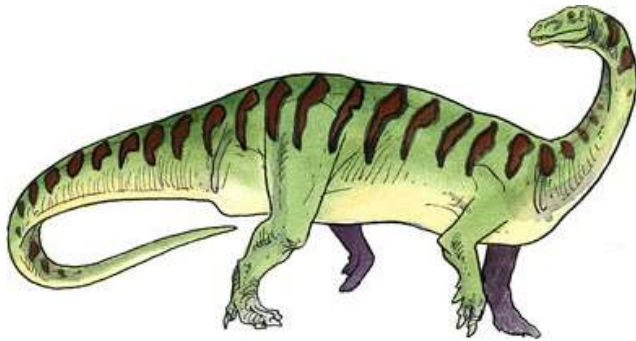
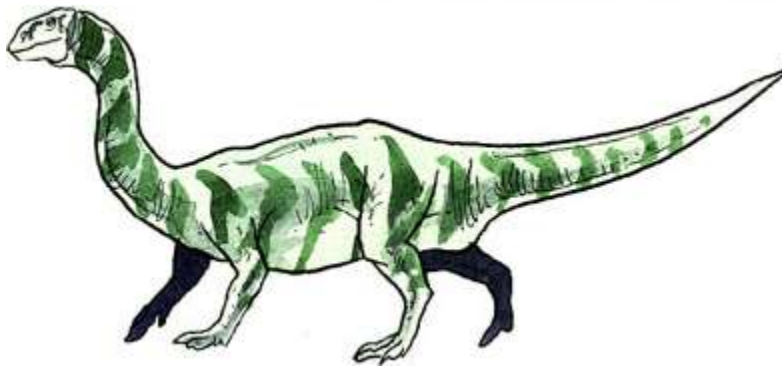
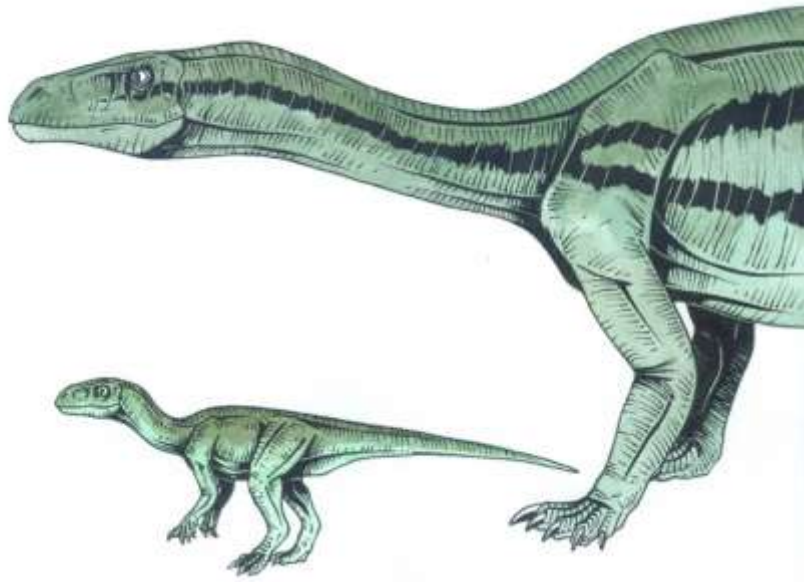




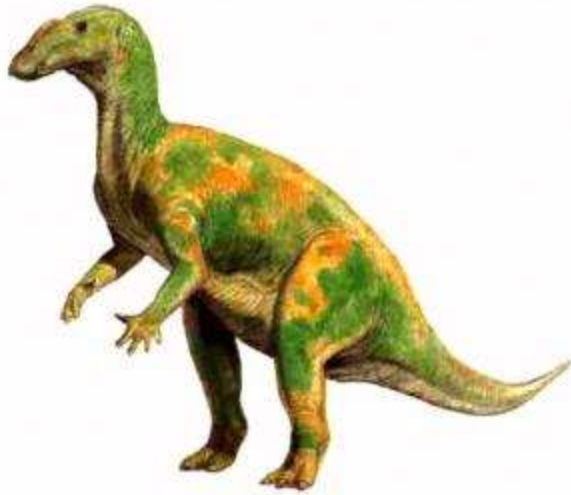


Opisthocoelicaudia

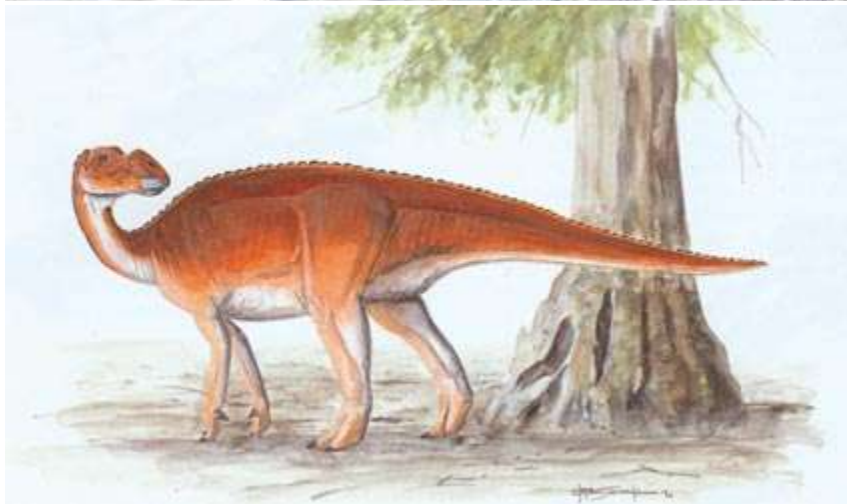




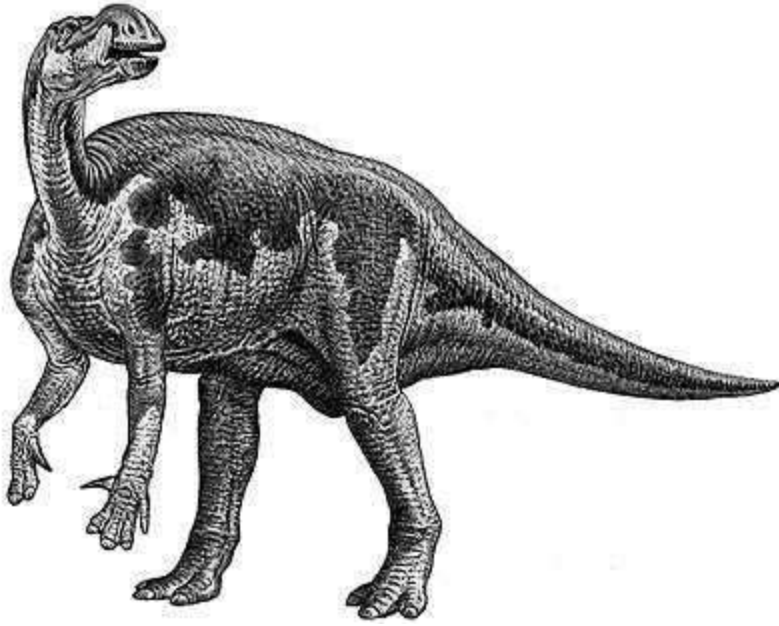
Mussasaurus



Muttaborrasaurus

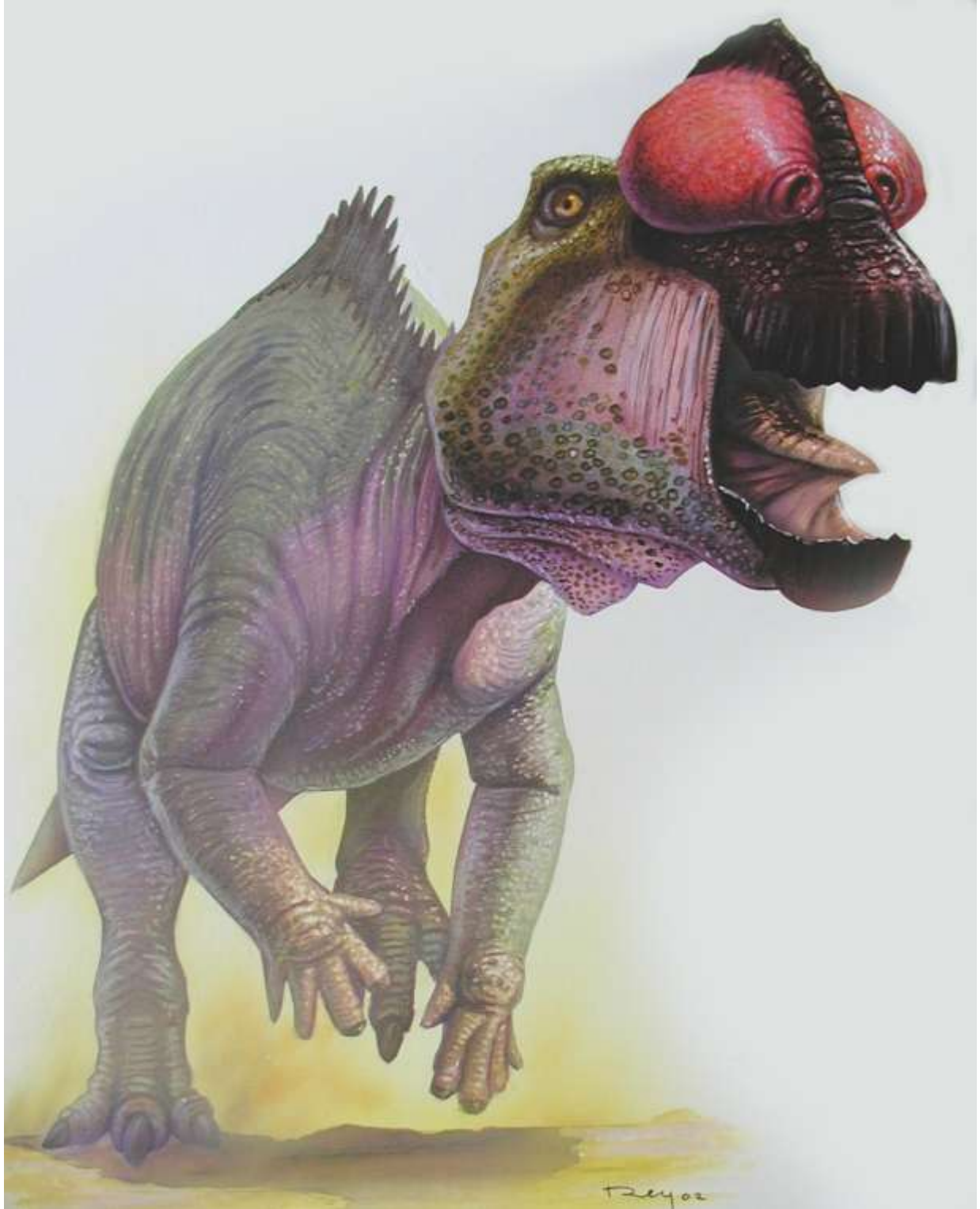




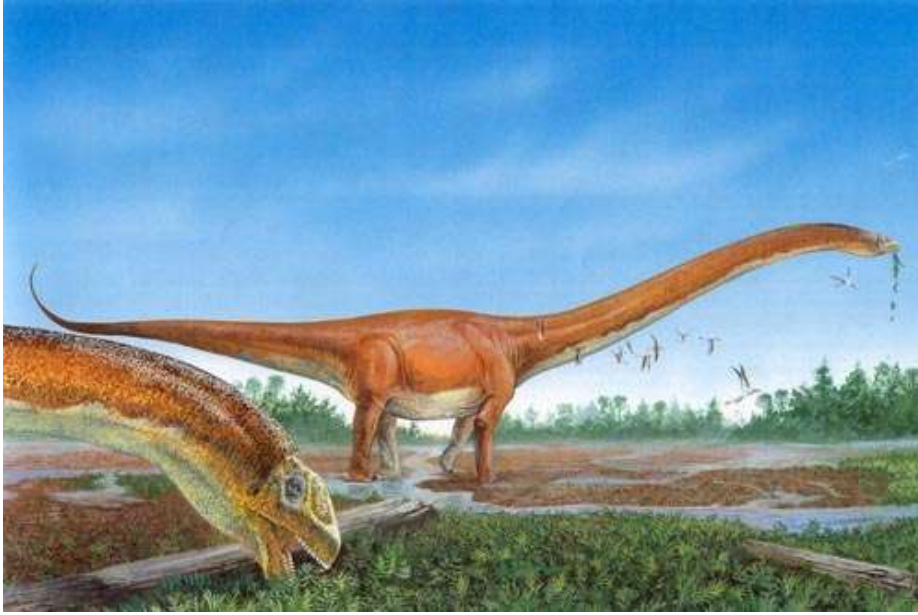


Muttaburrasaurus

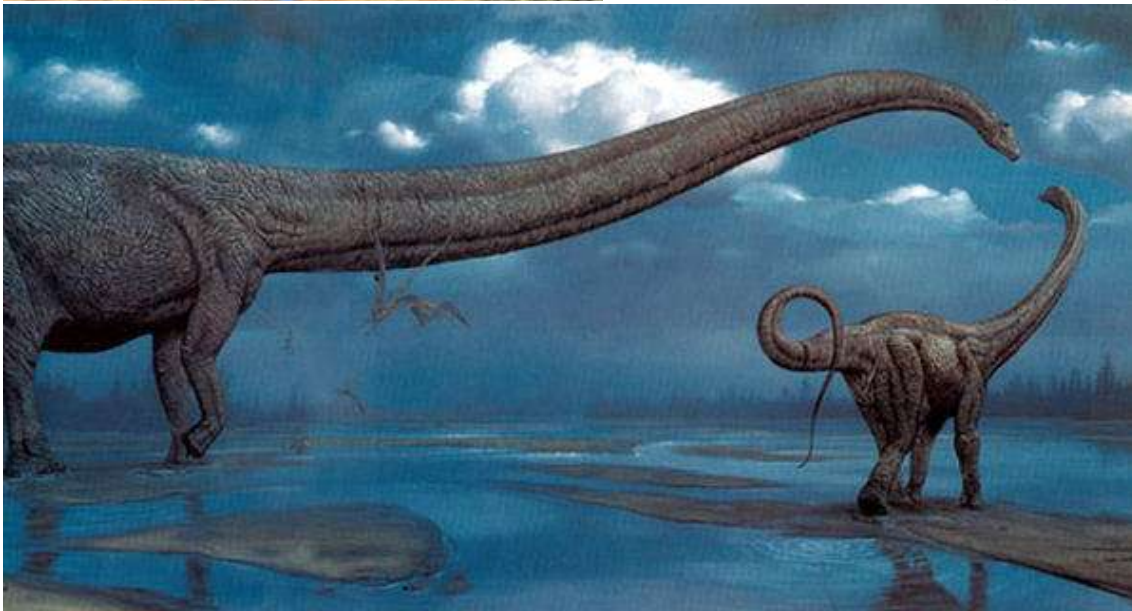
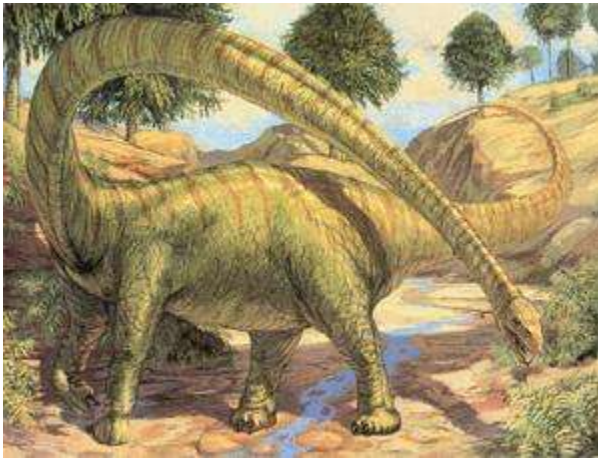




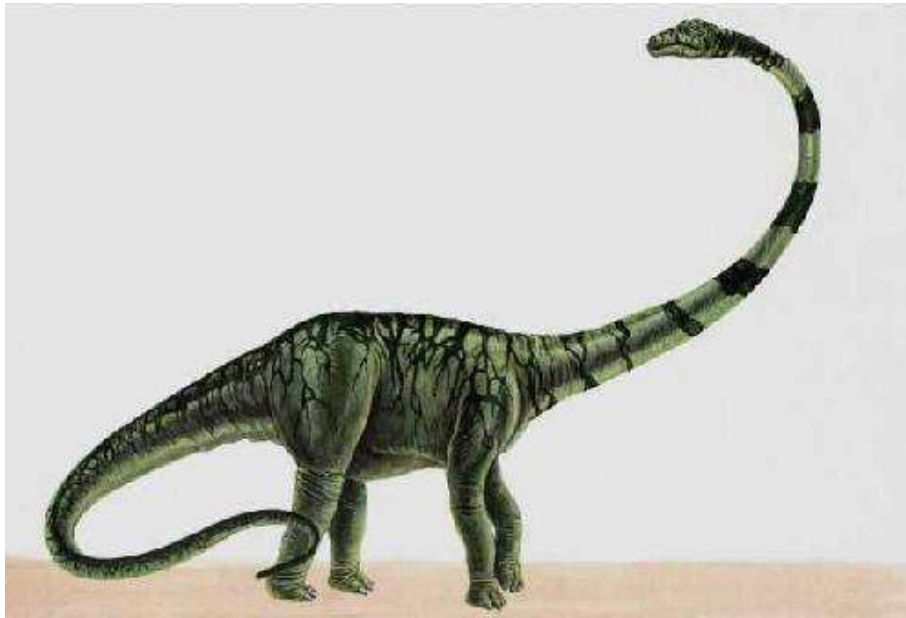
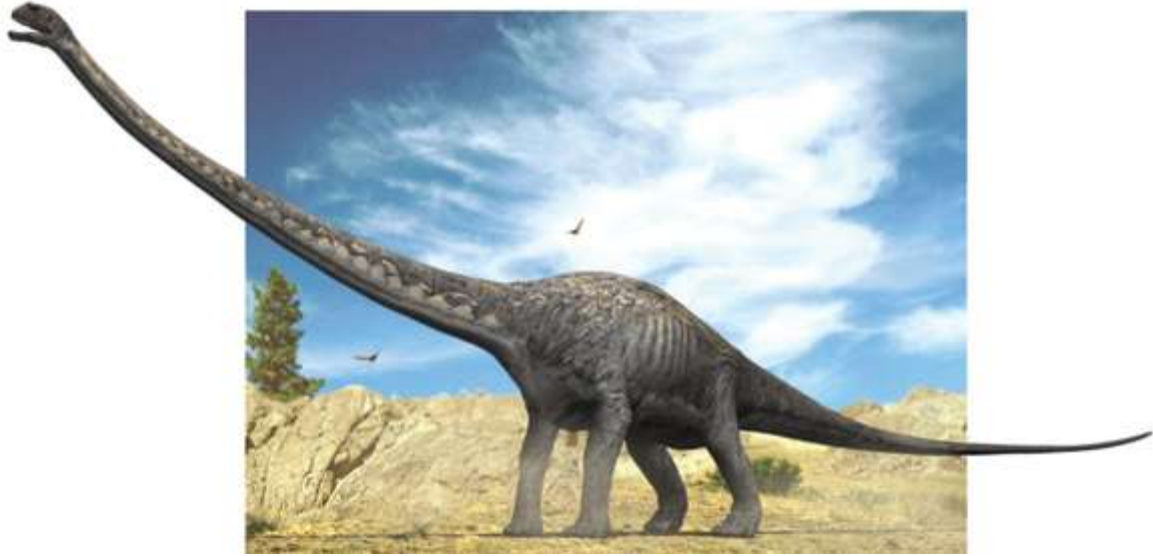
Muttaburrasaurus



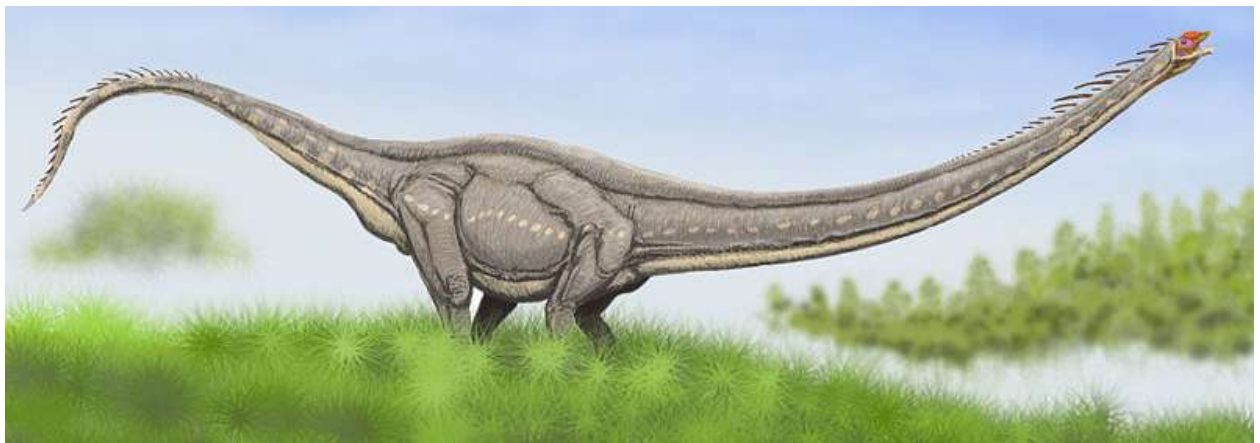
Mamenchisaurus

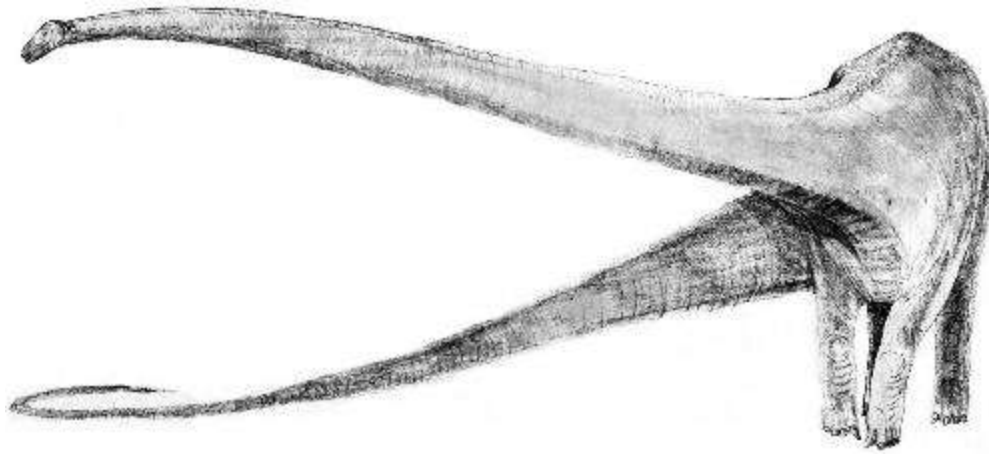




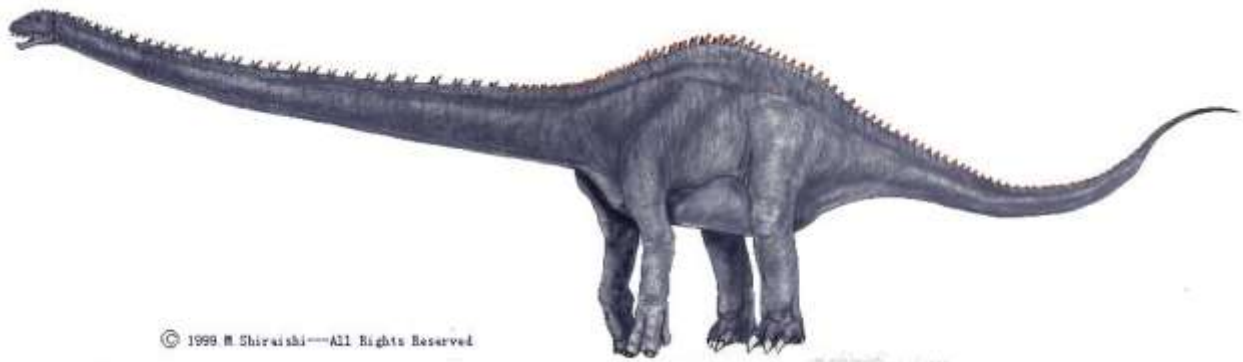


Mamenchisaurus



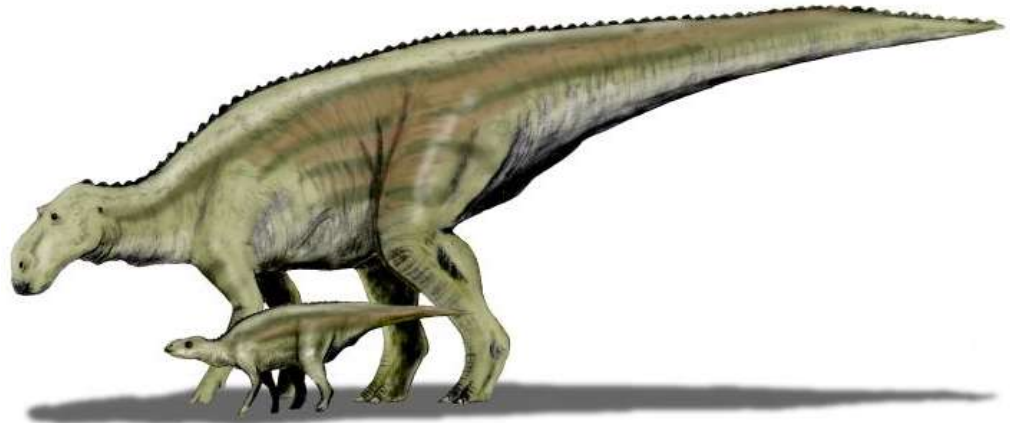


Mamenchisaurus



© 1999 M. Shirasaki—All Rights Reserved





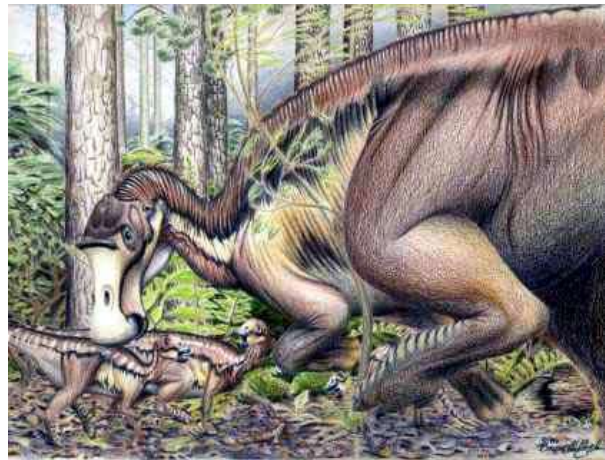
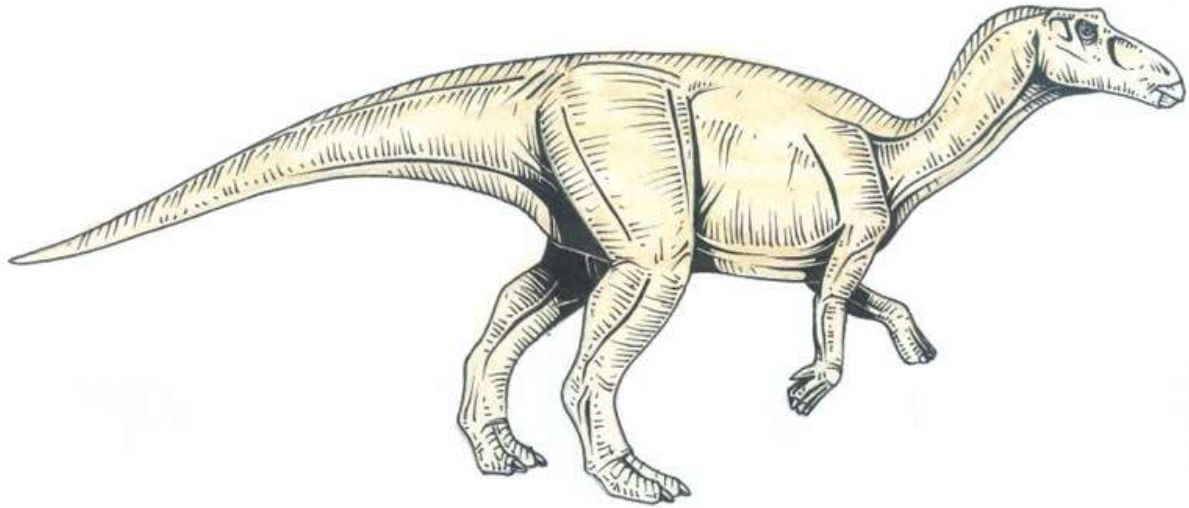
Maiasaura

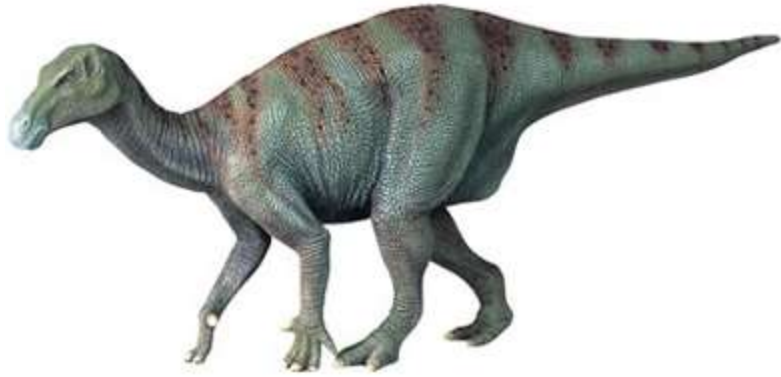




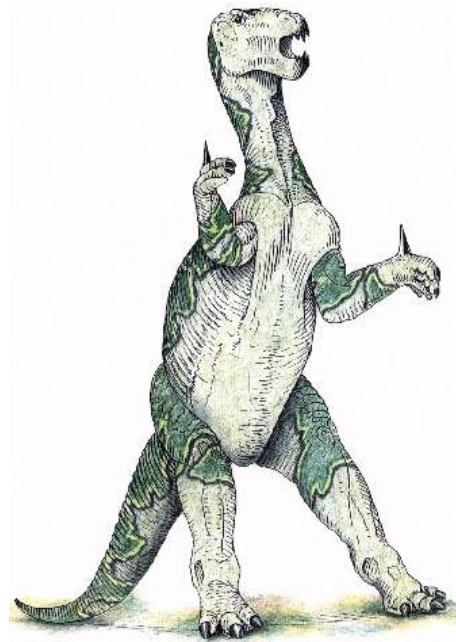
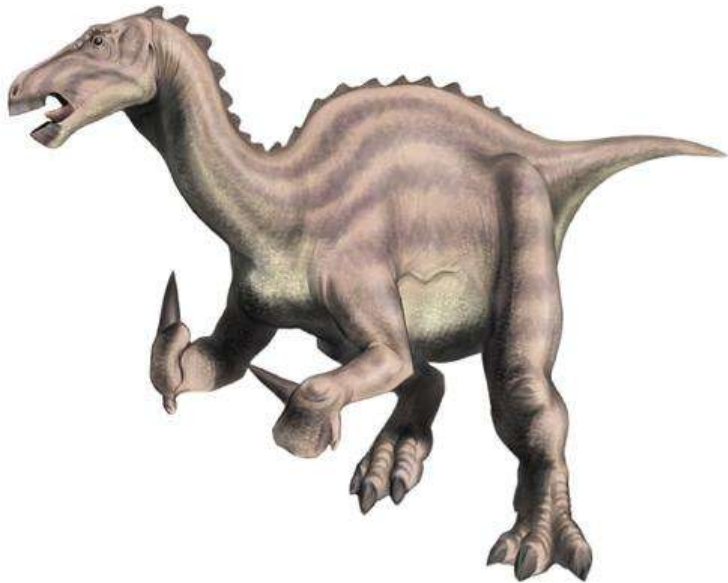
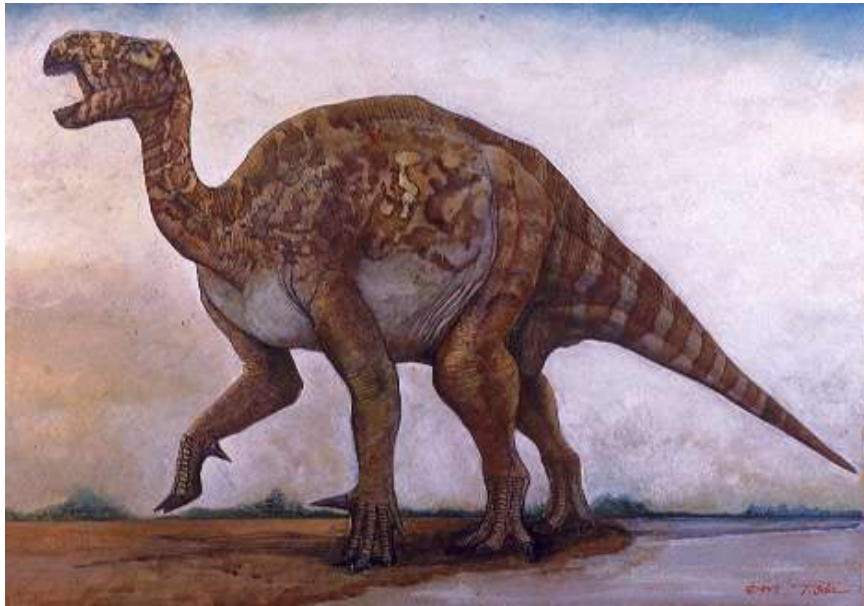


Maiasaura





Iguanodon





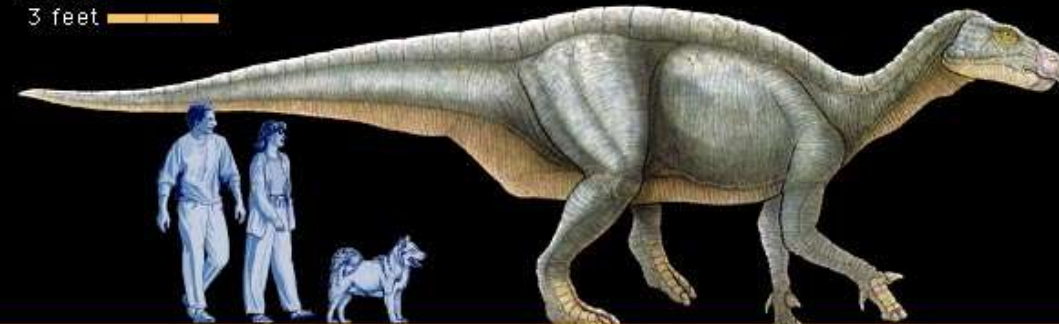




## IGUANODON

Dino Family Tree

1 metre   
3 feet 



*Iguanodon* (ig-WHA-noh-don) "iguana tooth"

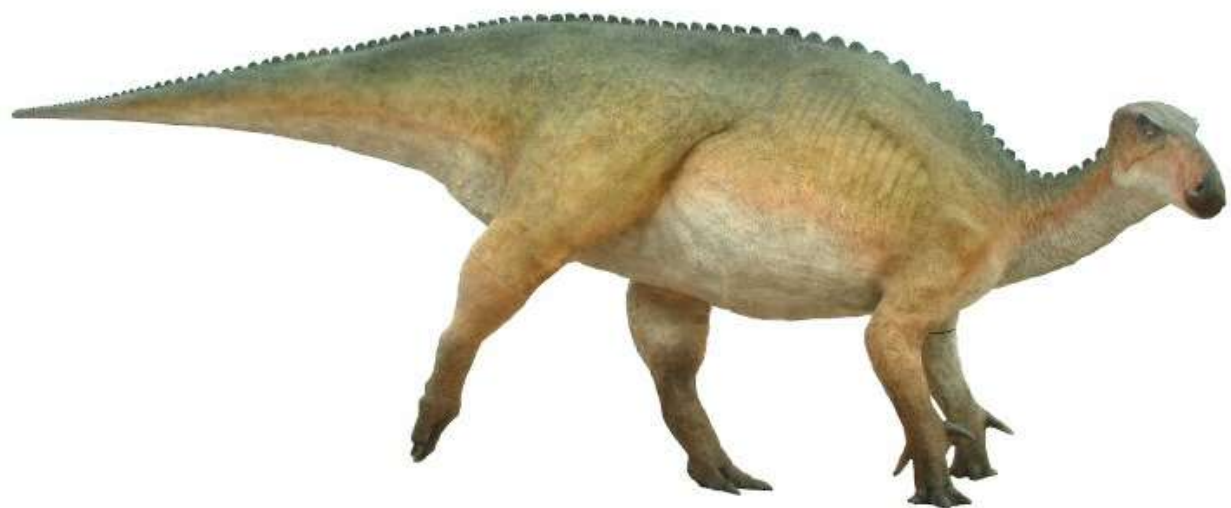
**Period:** Late Jurassic and Early Cretaceous

**Length:** 30 feet (9 metres)

**Location:** Africa, Asia, Australia, Europe,  
and North America

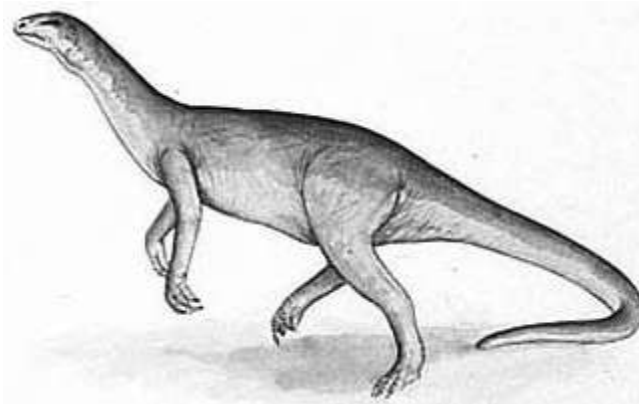
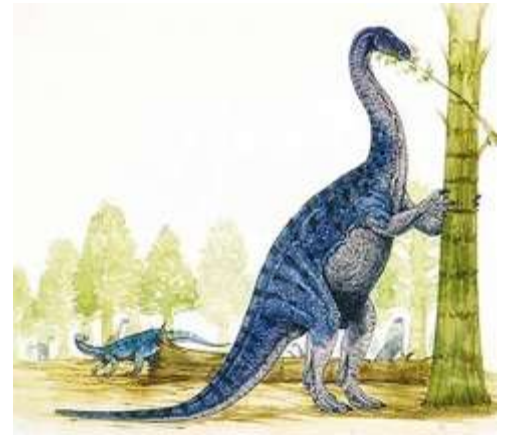
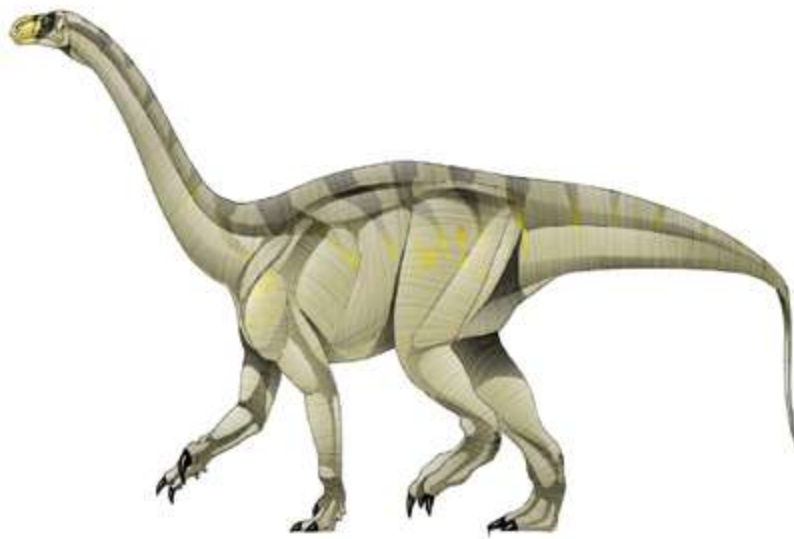
A massive herbivore with a horny beak and cheek teeth for grinding vegetation. Its hands had distinctive hoofed fingers and spiked thumbs.

© 2002 Encyclopædia Britannica, Inc.



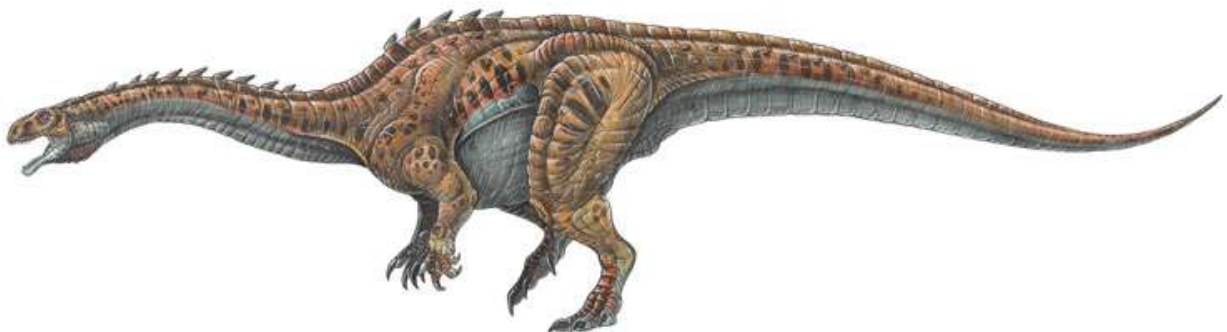
Iguanodon

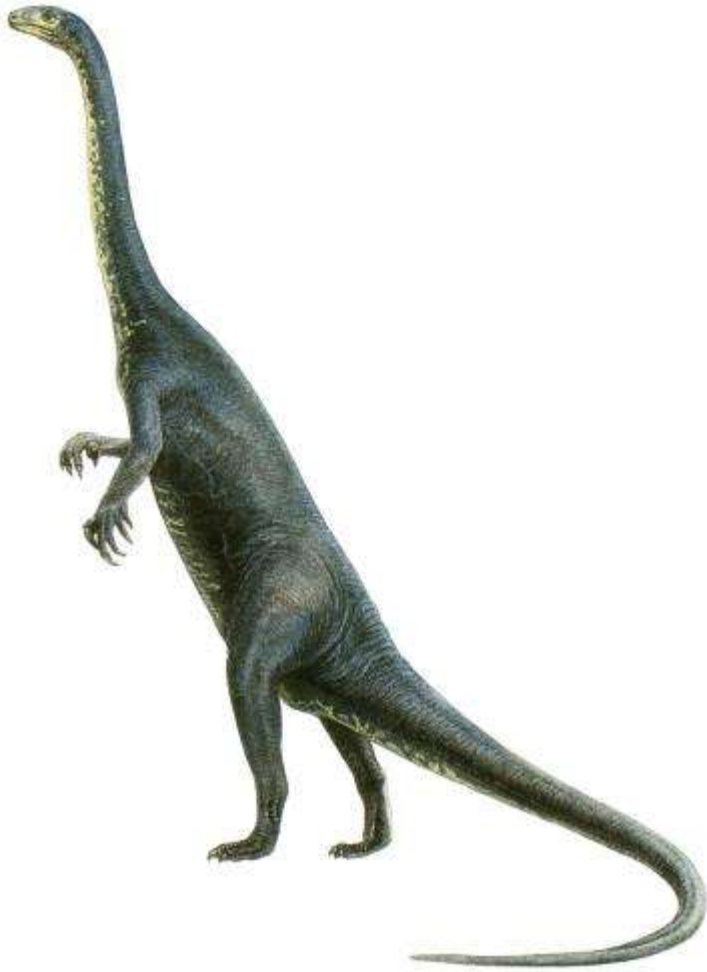




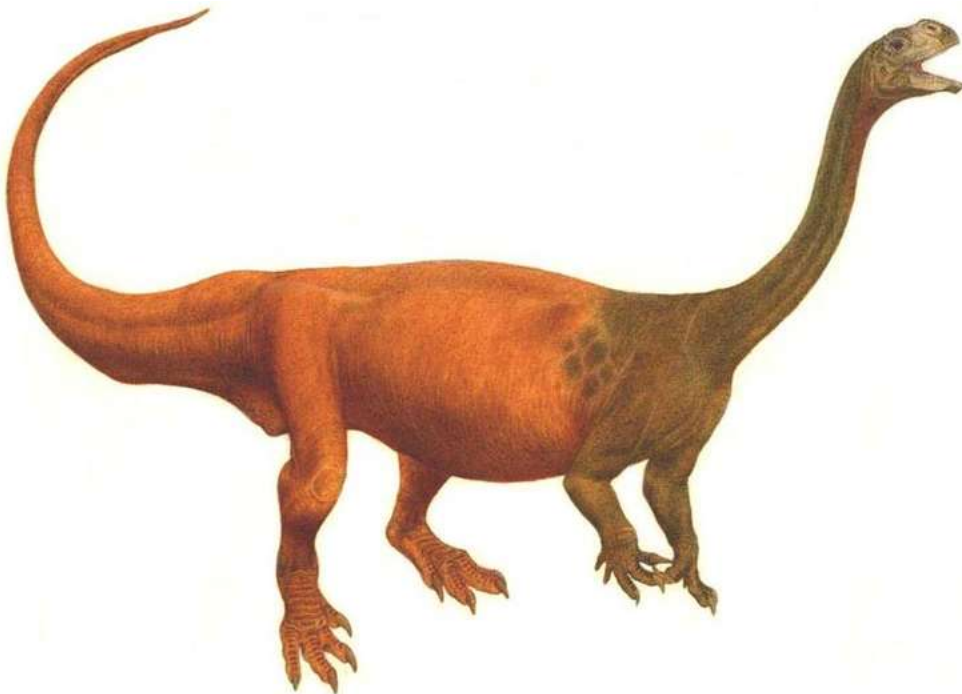
Euskelosaurus

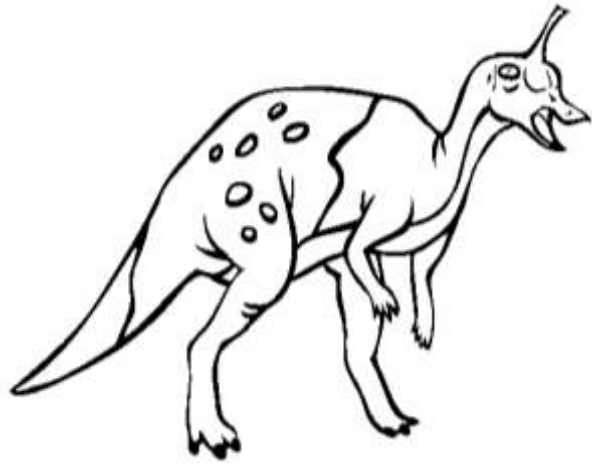
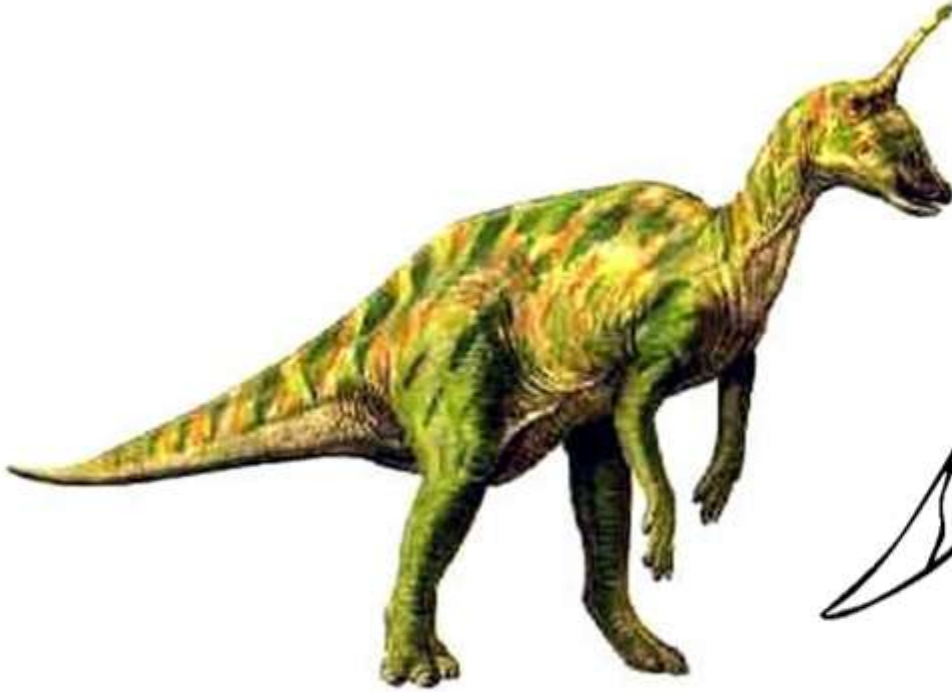
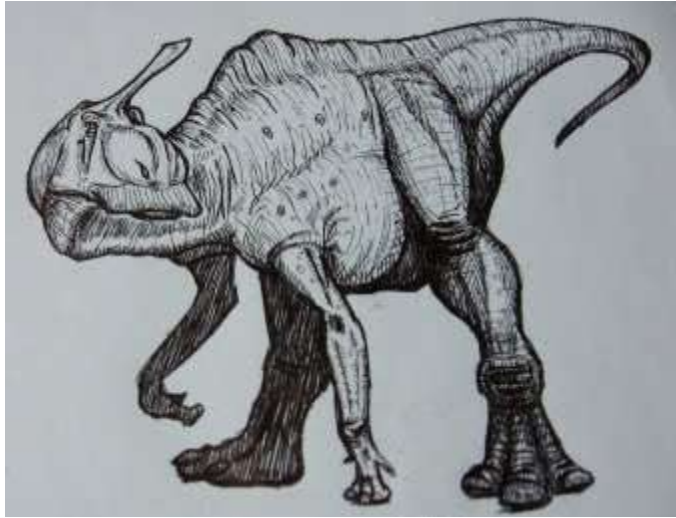
Massospondylus - [http://www.newscientist.com/data/images/ns/cms/dn7746/dn7746-2\\_750.jpg](http://www.newscientist.com/data/images/ns/cms/dn7746/dn7746-2_750.jpg)





Massospondylus

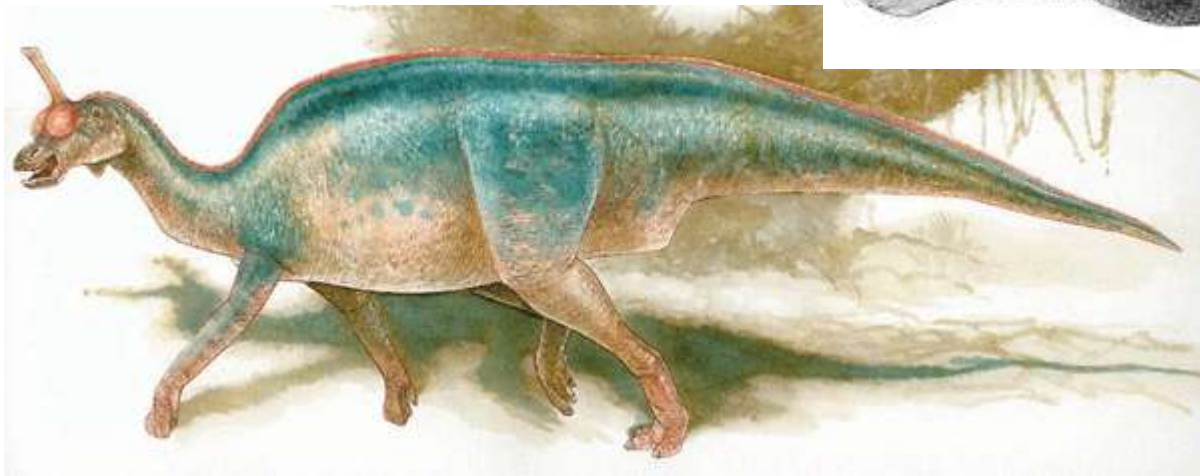
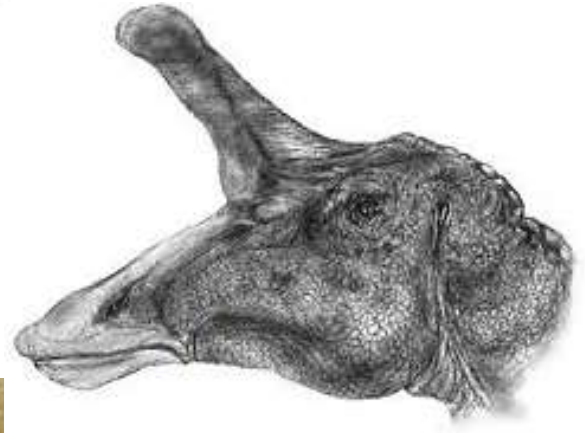
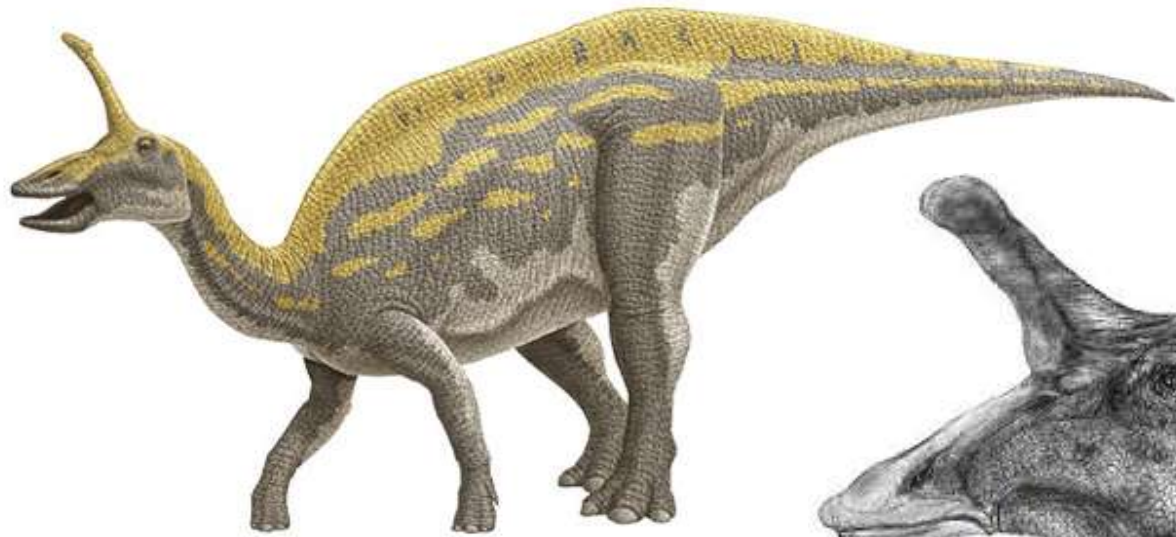




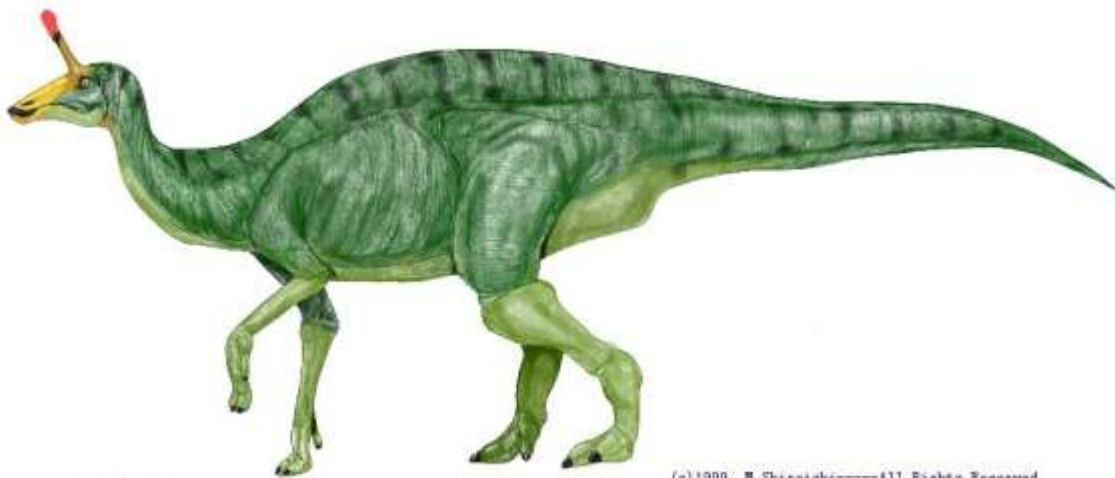
Tsintaosaurus



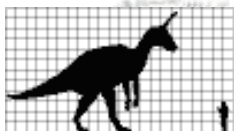


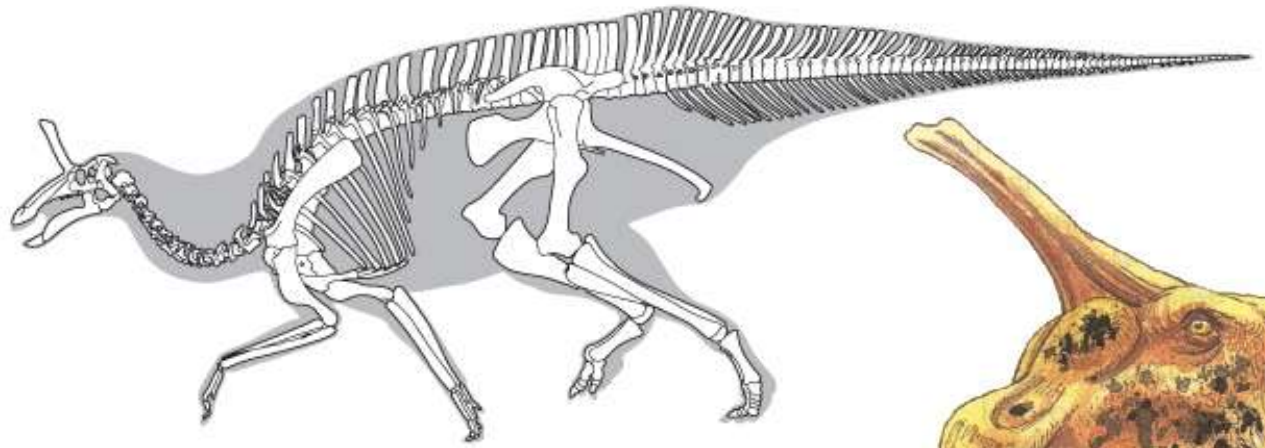


Tsintaosaurus

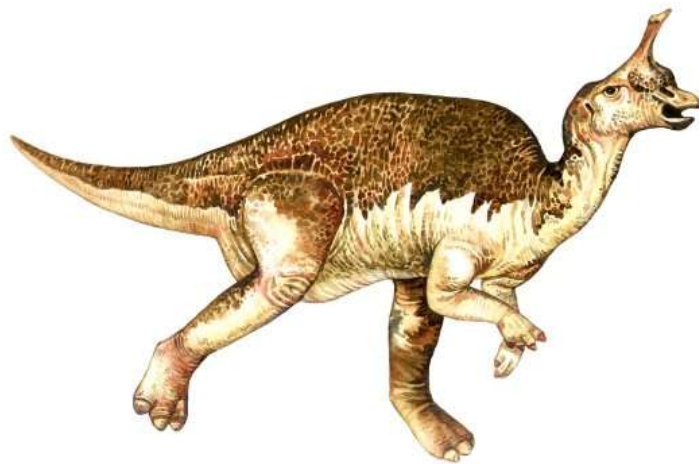
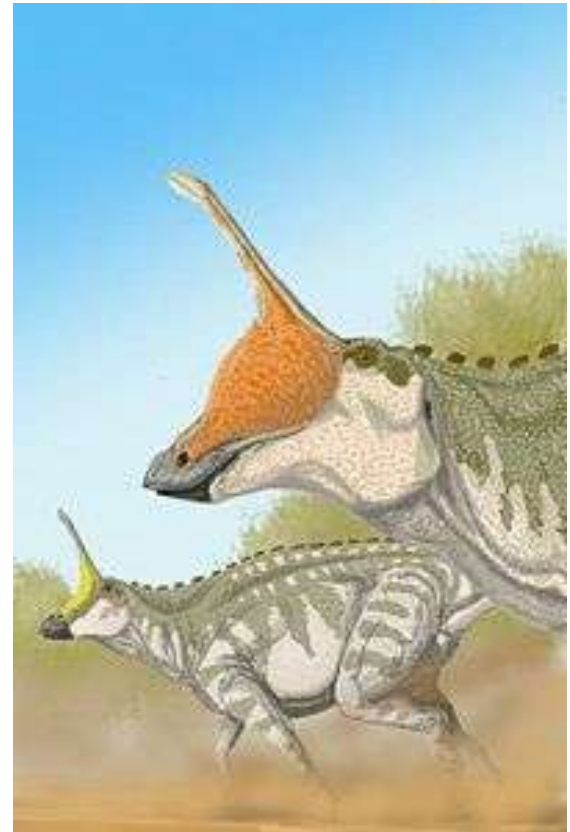
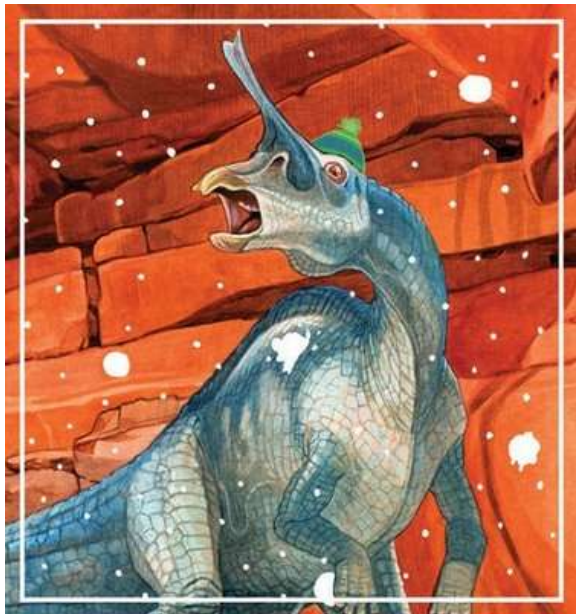


(c) 1999 M. Shiraiishi—All Rights Reserved

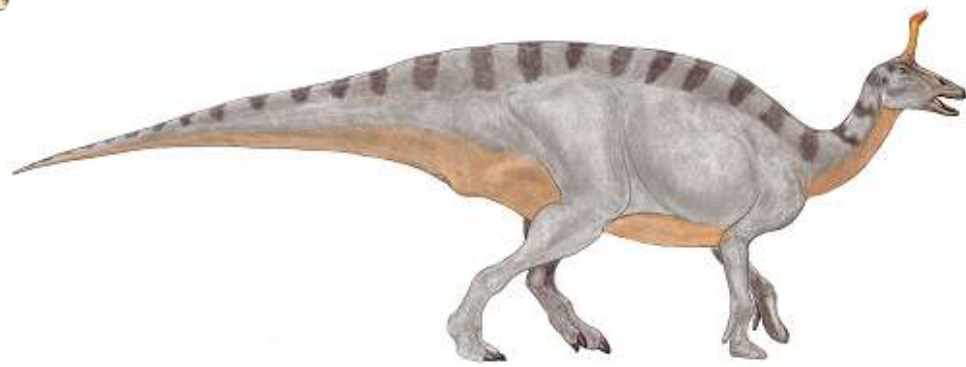




Tsintaosaurus



Tsintaosaurus



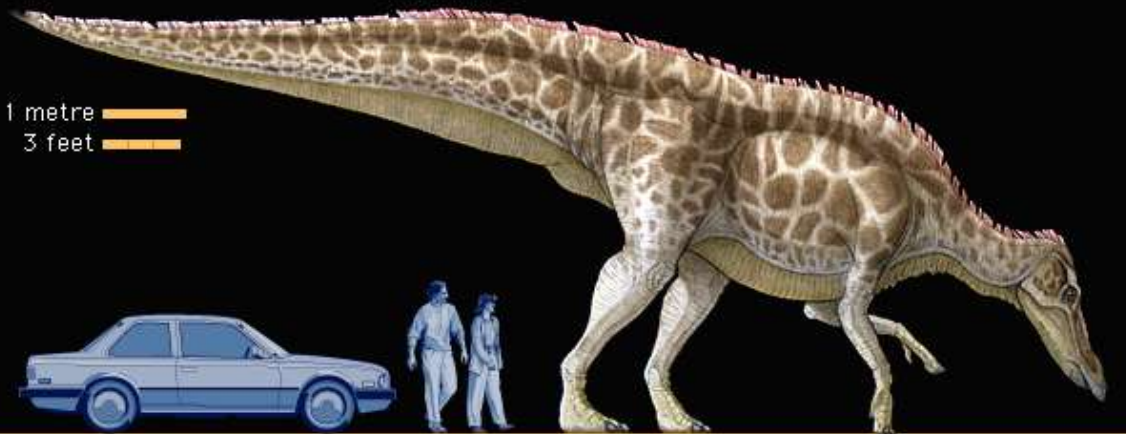




Shantungosaurus

**SHANTUNGOSAURUS**

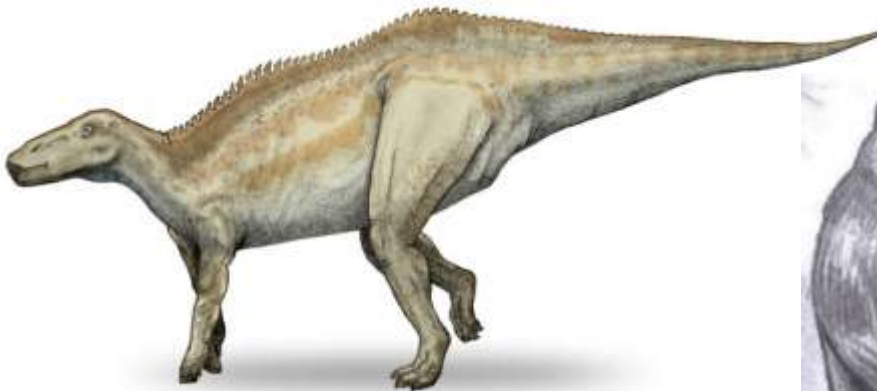
Dino Family Tree



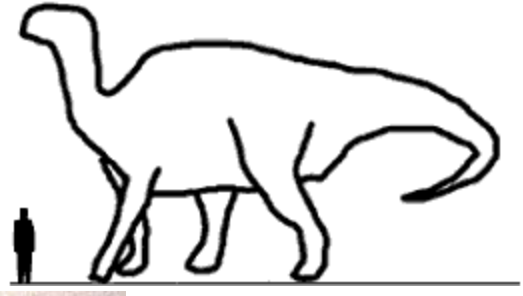
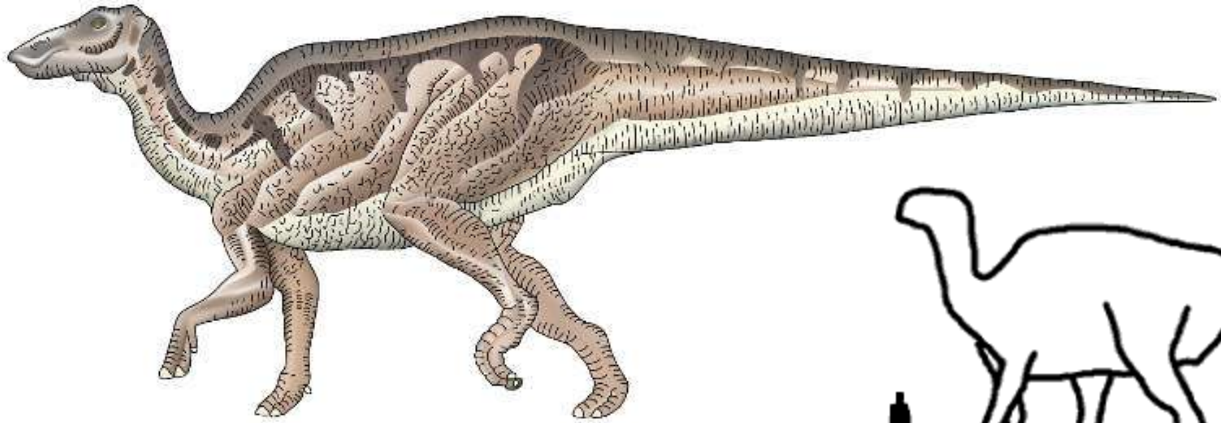
*Shantungosaurus* (shan-TUNG-oh-SORE-us)  
 "Shantung lizard"  
**Period:** Late Cretaceous  
**Length:** 49 feet (15 metres)  
**Location:** Asia

This flat-headed herbivore had an extended jaw for holding many teeth. It was one of the largest of the duck-billed dinosaurs.

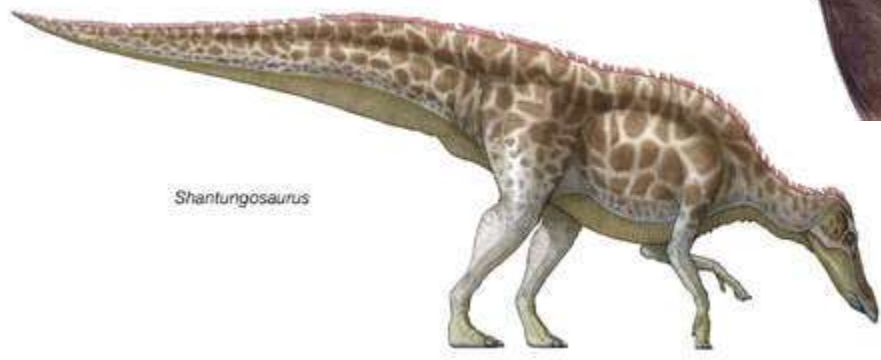
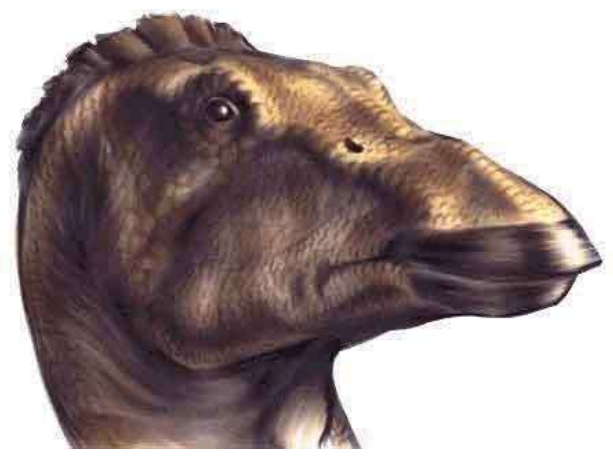
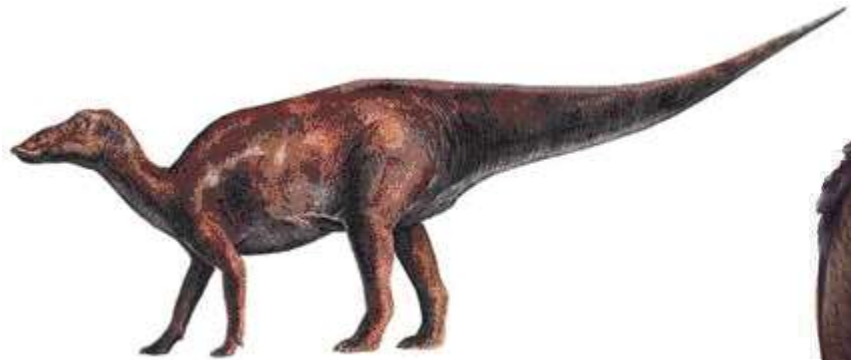
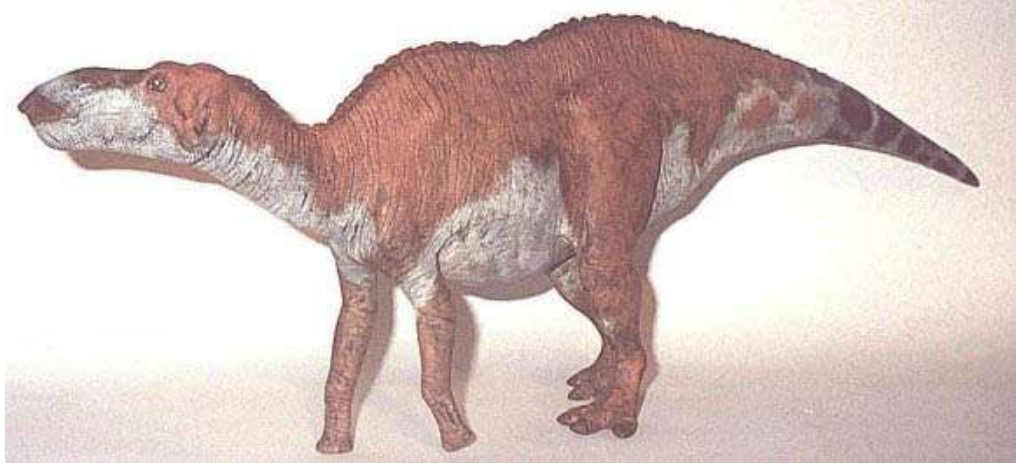
©1998 Encyclopaedia Britannica, Inc.





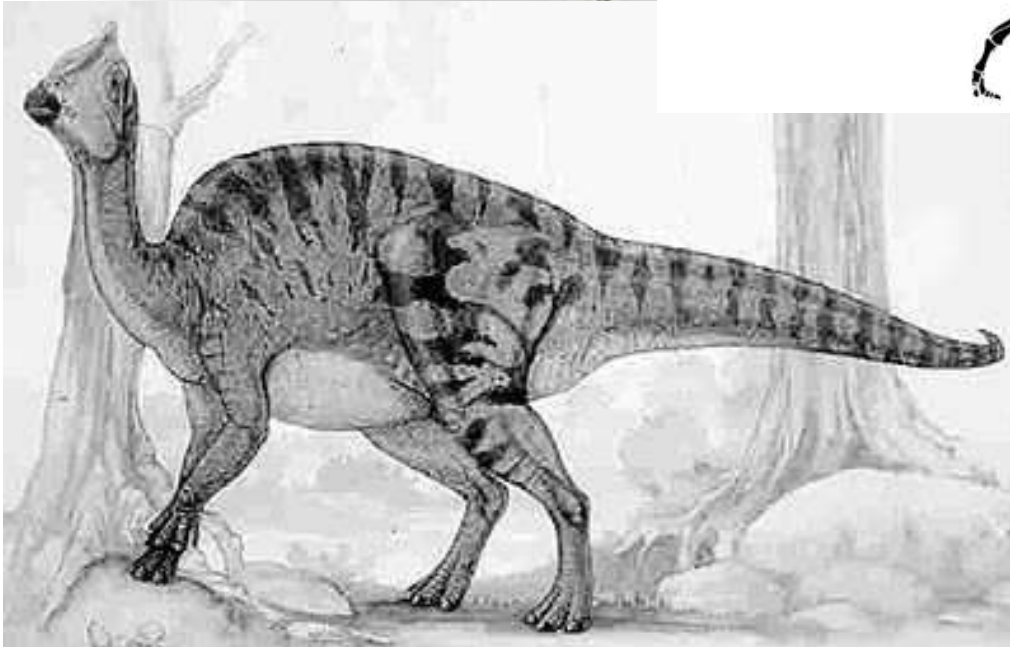
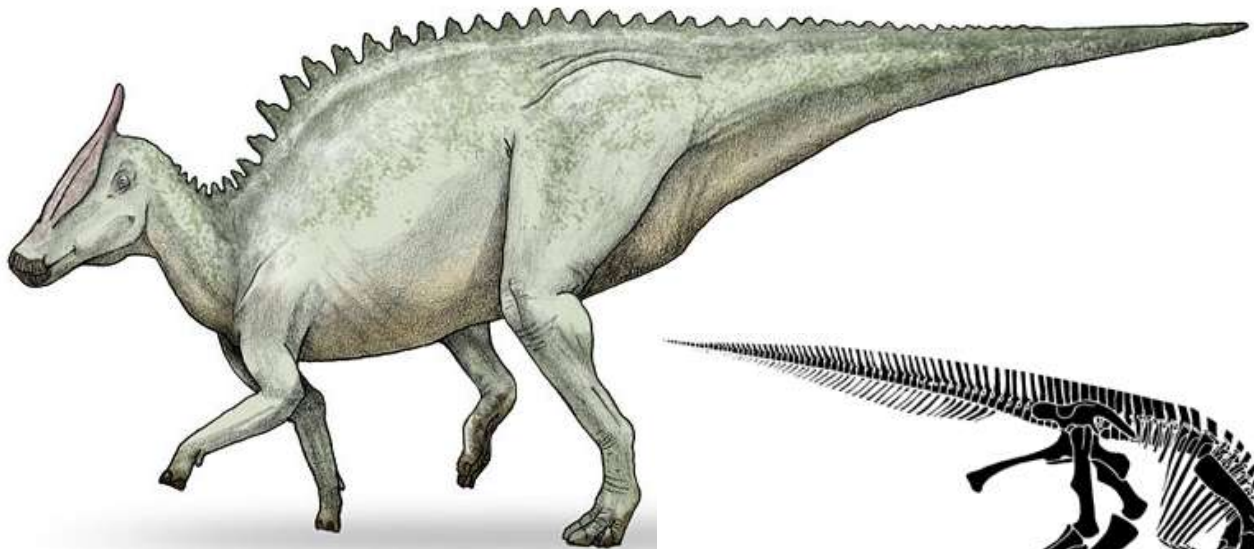
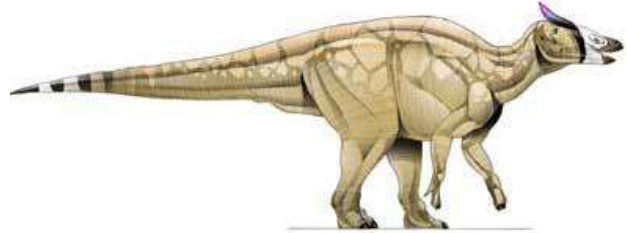
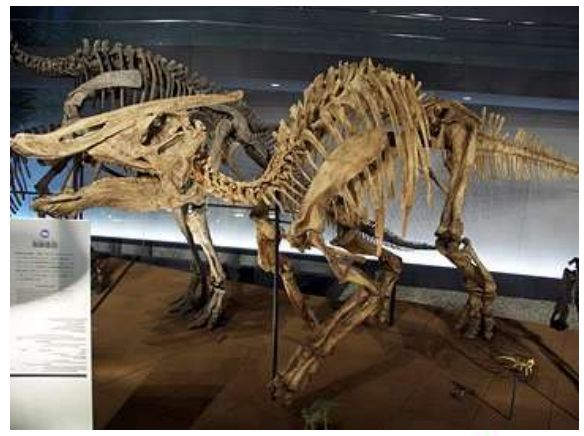
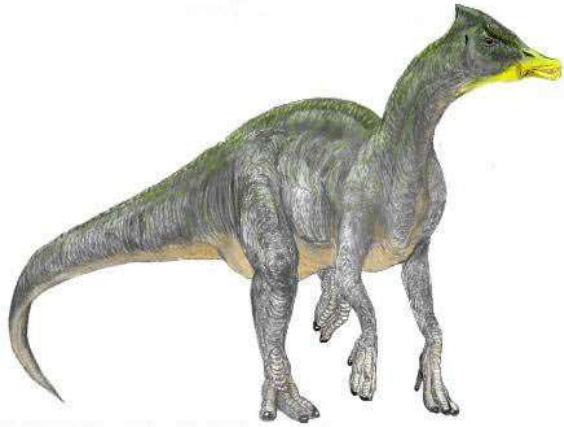


Shantungosaurus



Shantungosaurus

Saurolophus



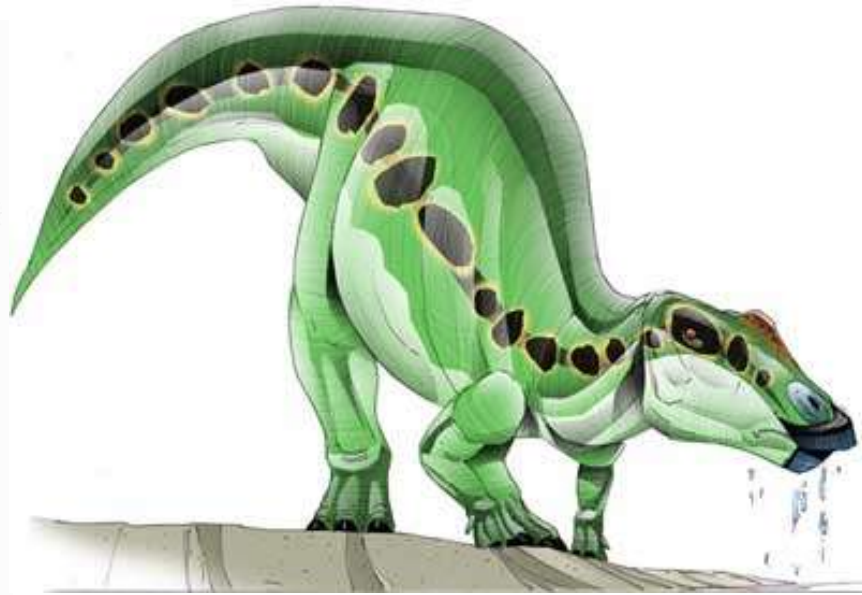




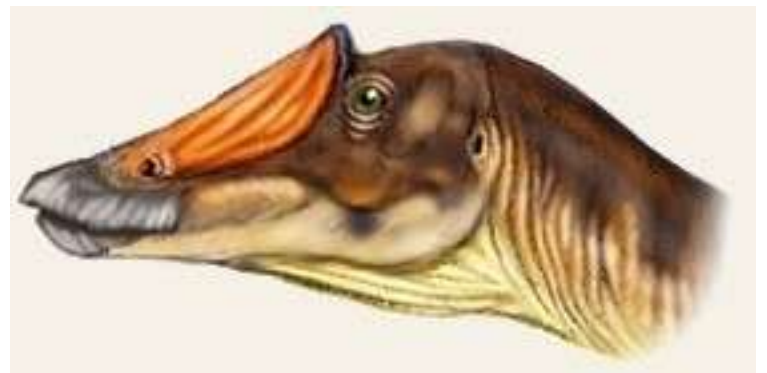
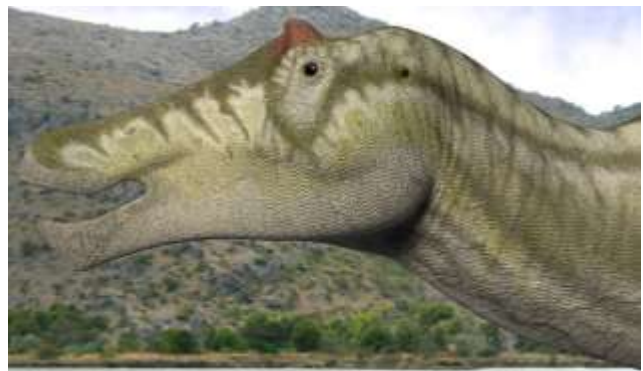
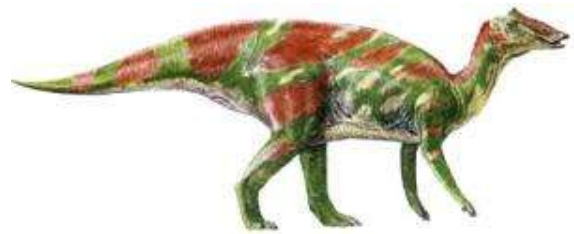
Saurolophus

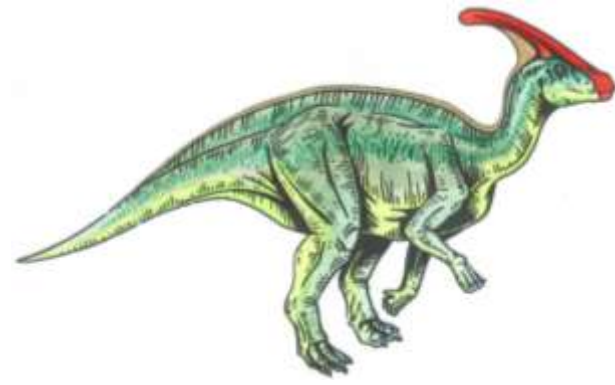
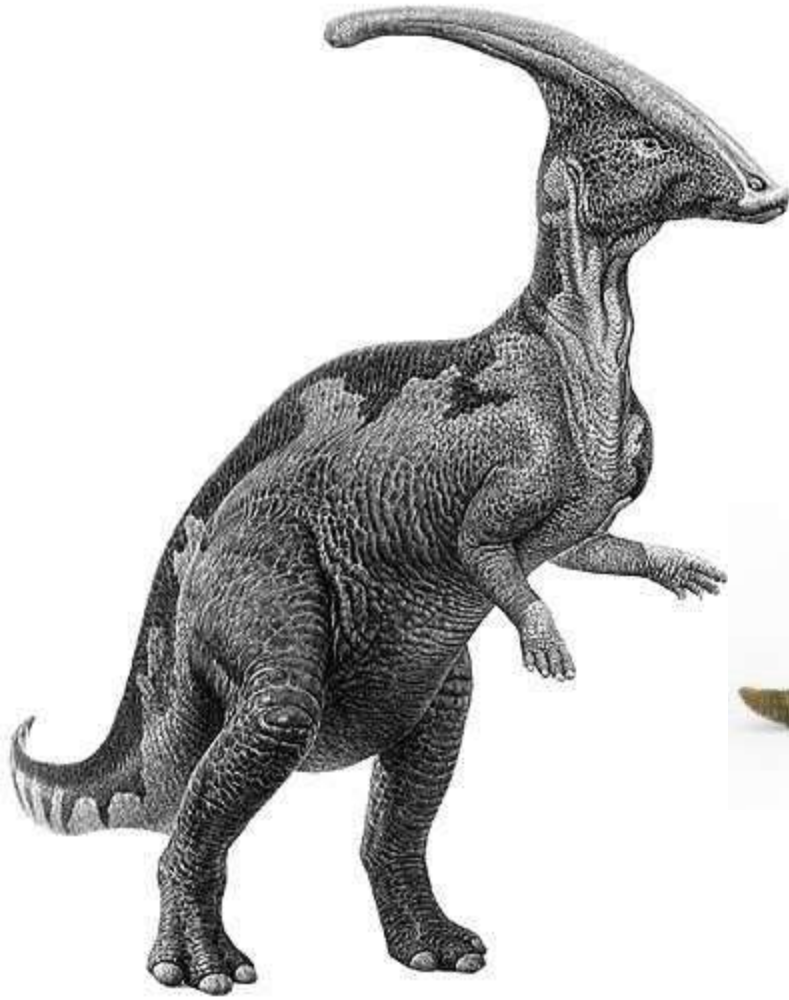




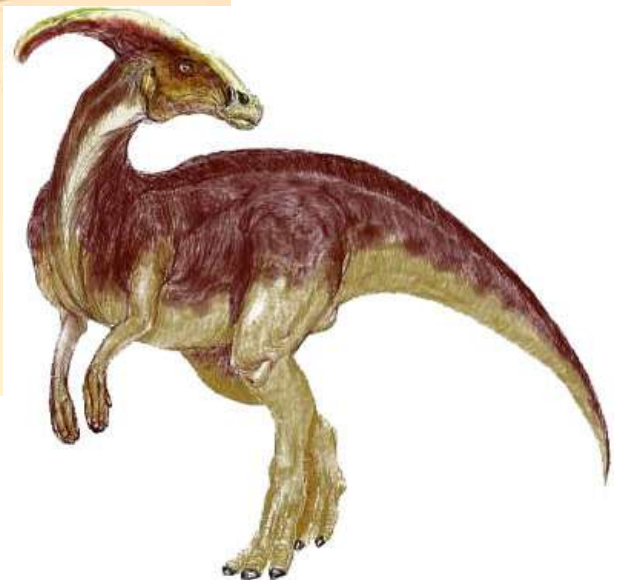
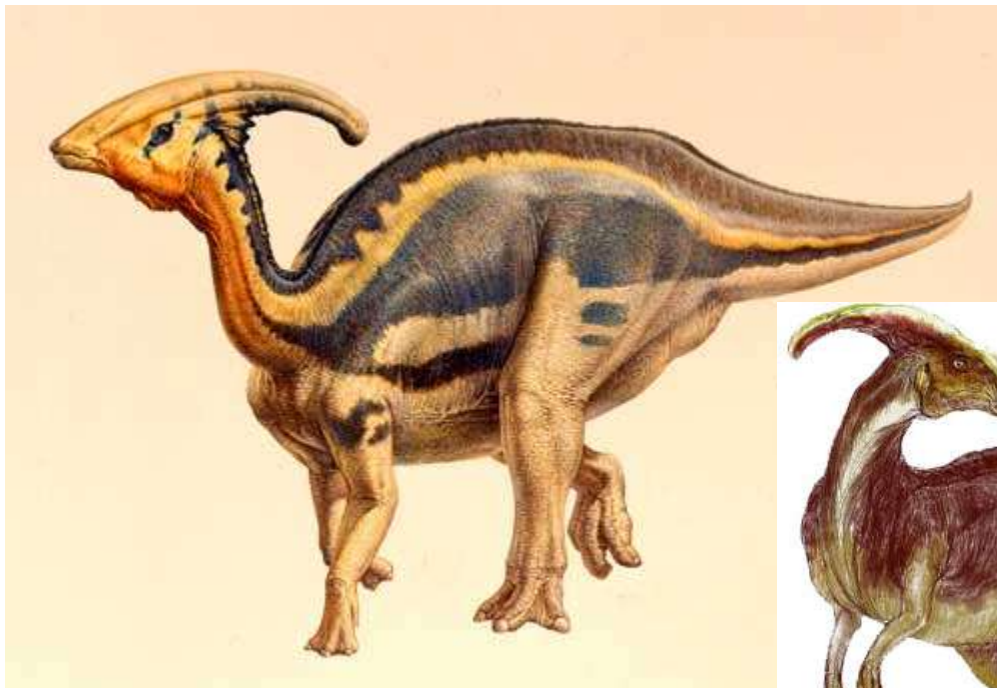


Prosaurolophus

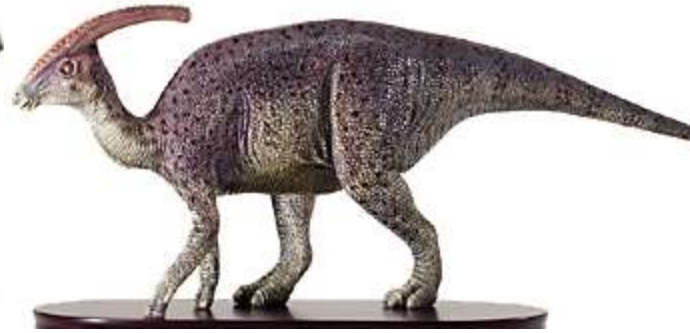
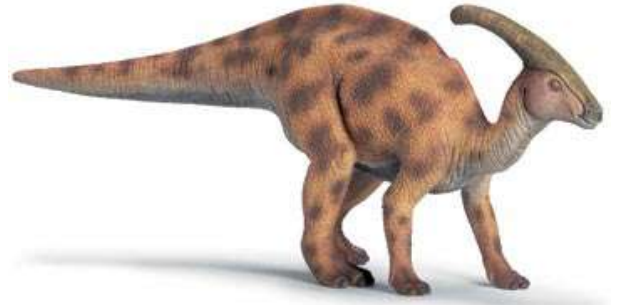
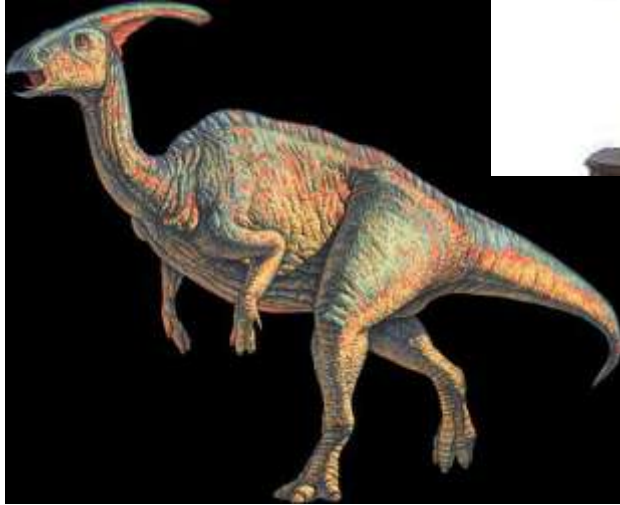




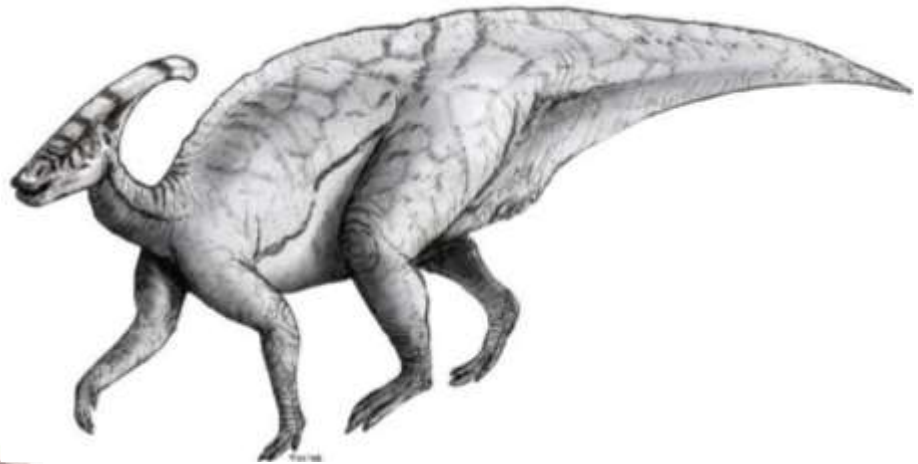
Parasaurolophus









Parasaurolophus





# LAMBEOSAURUS

Dino Family Tree

1 metre   
3 feet 



**Lambeosaurus** (LAM-bee-oh-SORE-us)  
"Lambe's lizard"  
**Period:** Late Cretaceous  
**Length:** 30 feet (9 metres)  
**Location:** North America

A robust herbivore with a distinctive head crest.

©1998 Encyclopaedia Britannica, Inc.

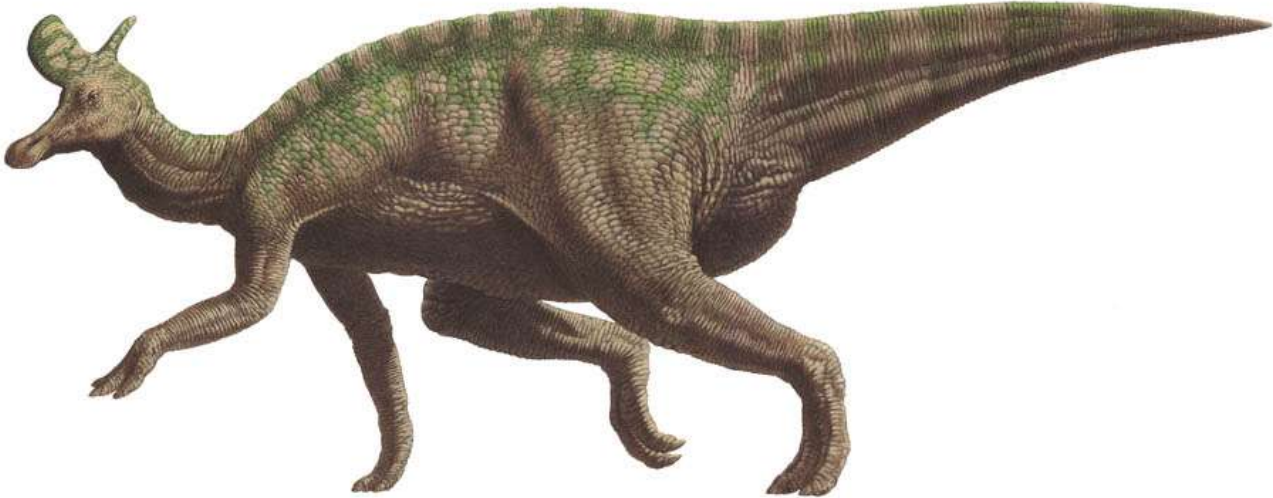
Lambeosaurus

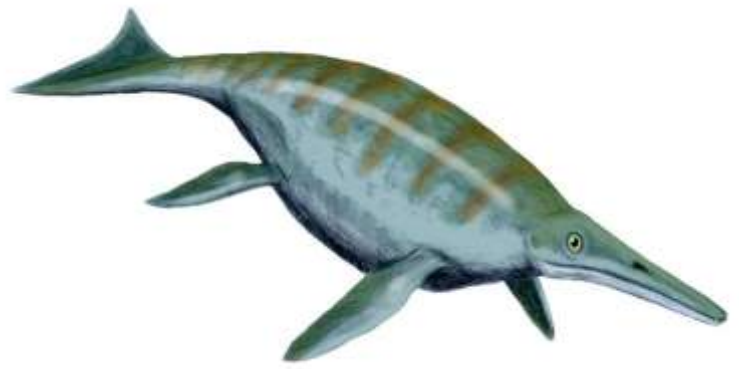
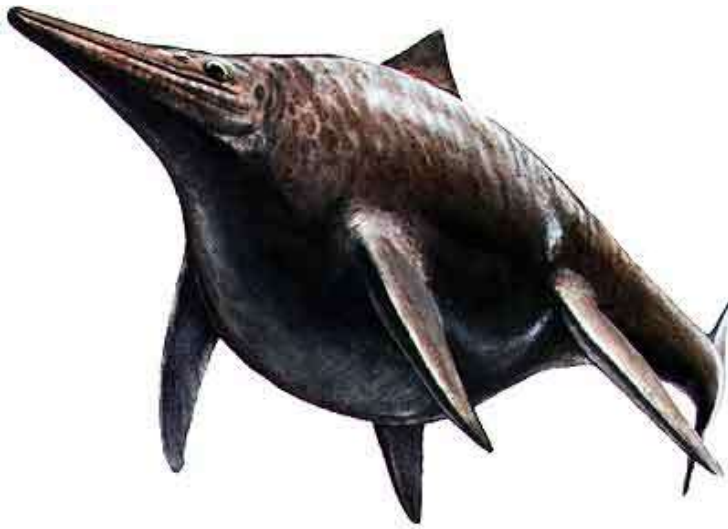




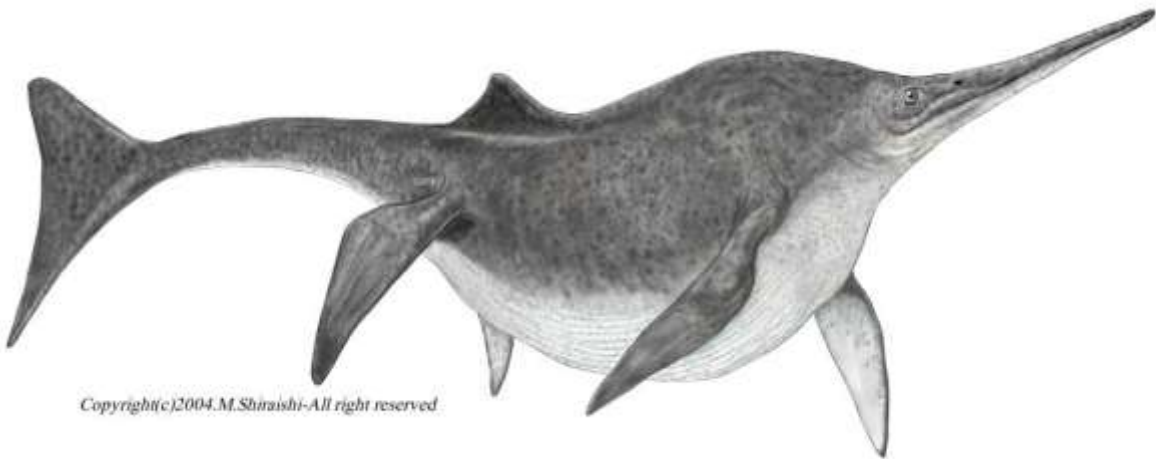


Lambeosaurus





Shonisaurus



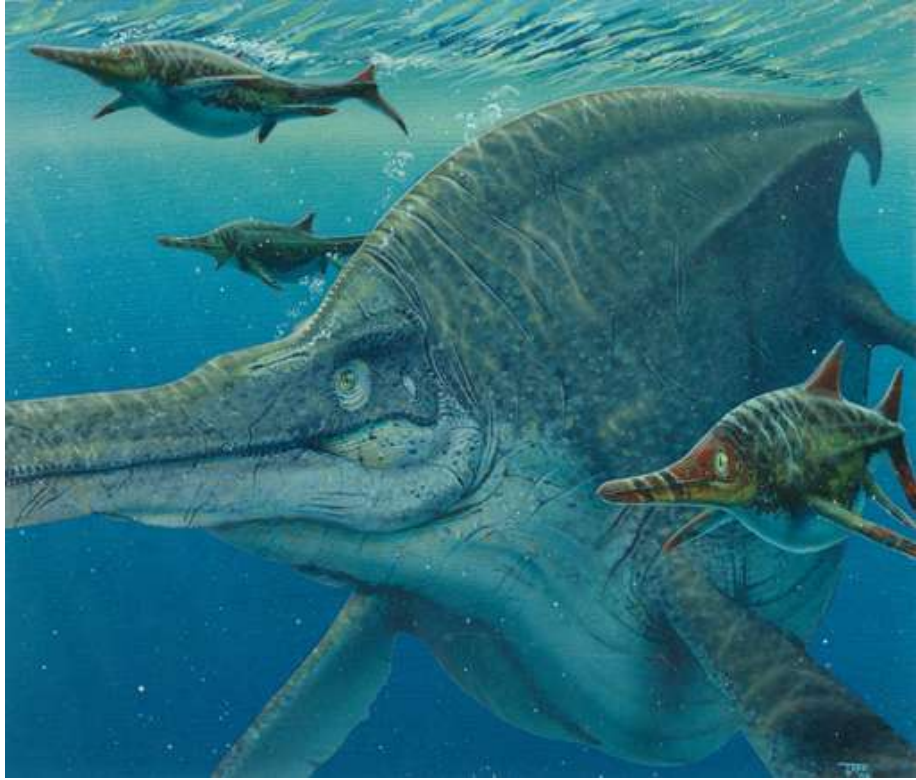
Copyright(c)2004.M.Shirashi-All right reserved



© Ron Garrett







Shonisaurus

