

Torosaurus

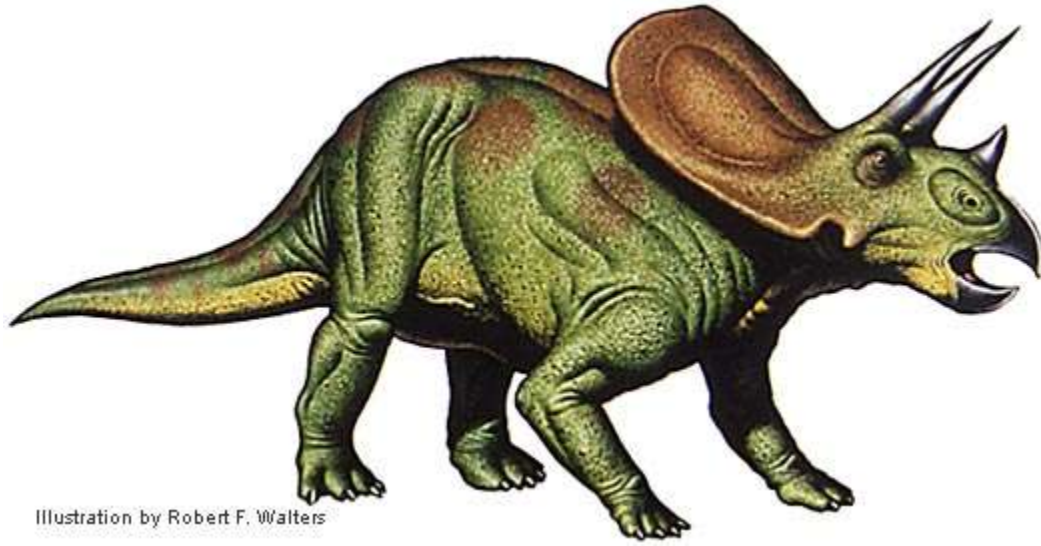
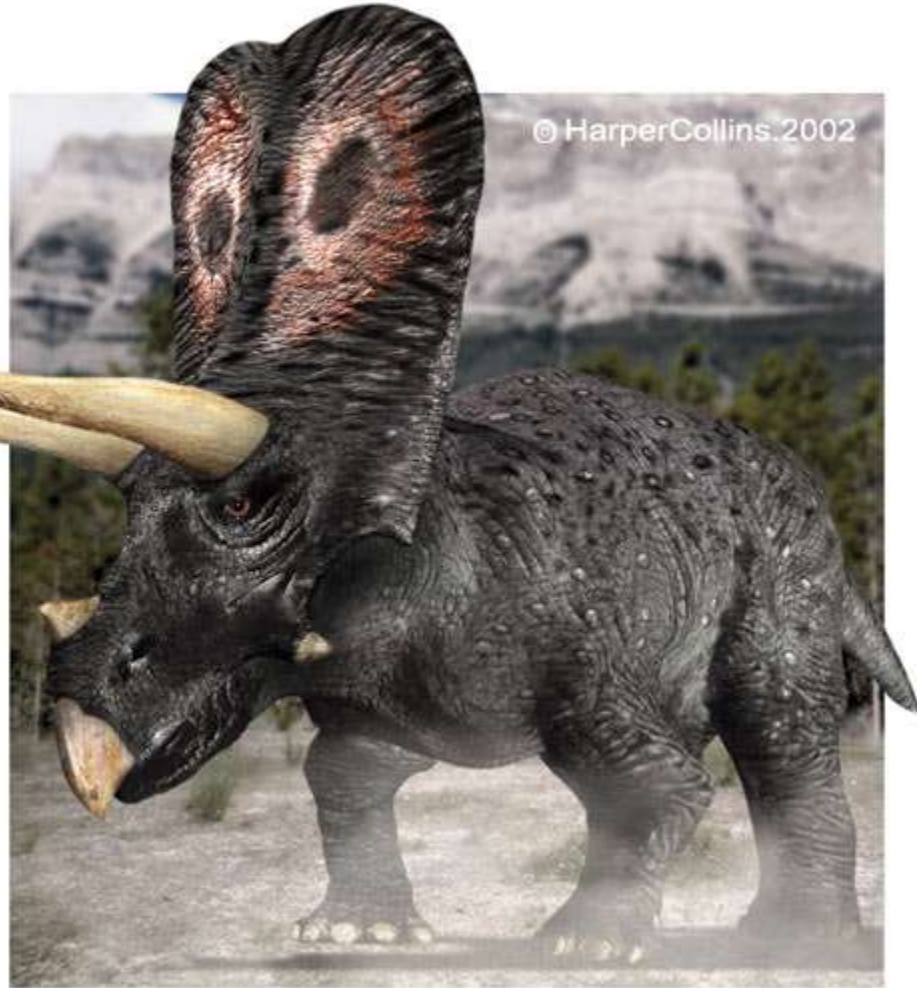


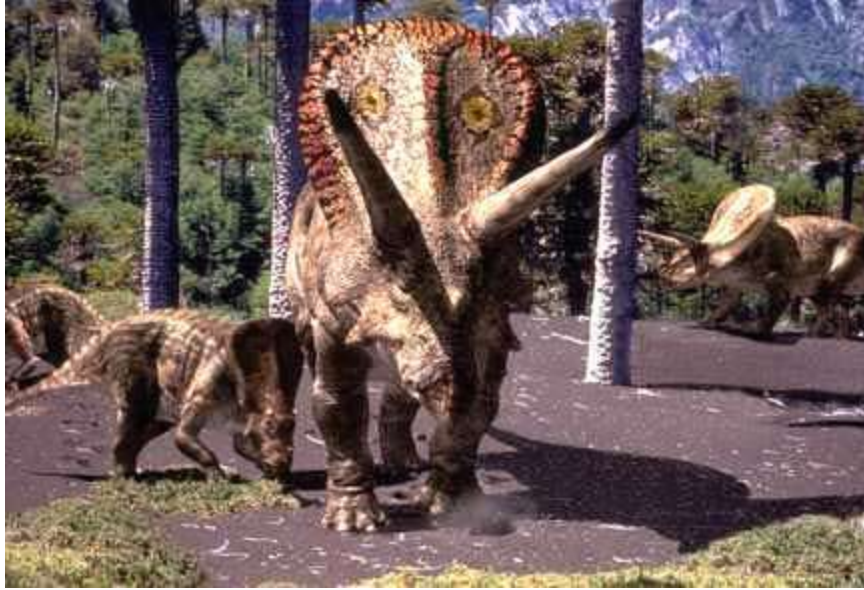
Illustration by Robert F. Walters



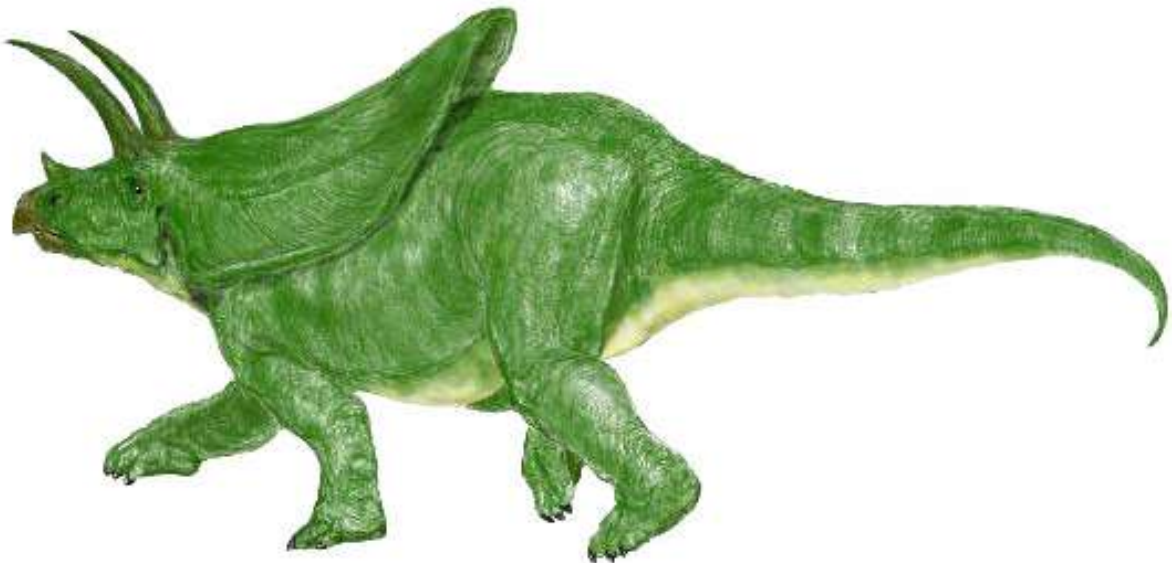


Torosaurus



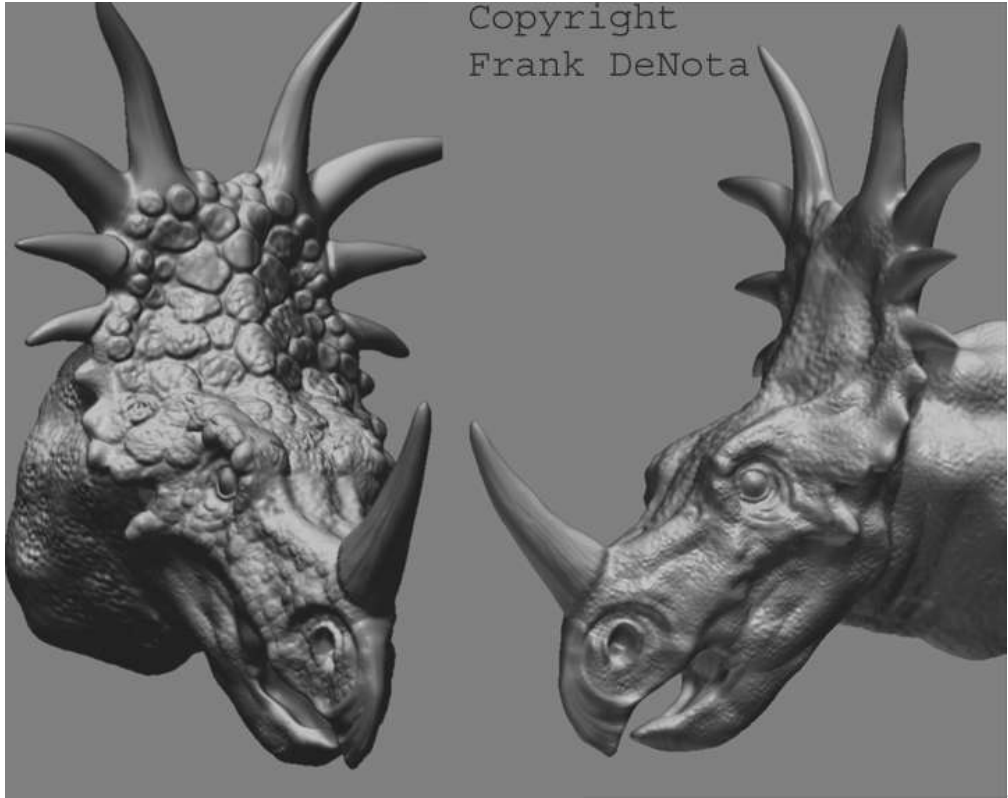


Torosaurus

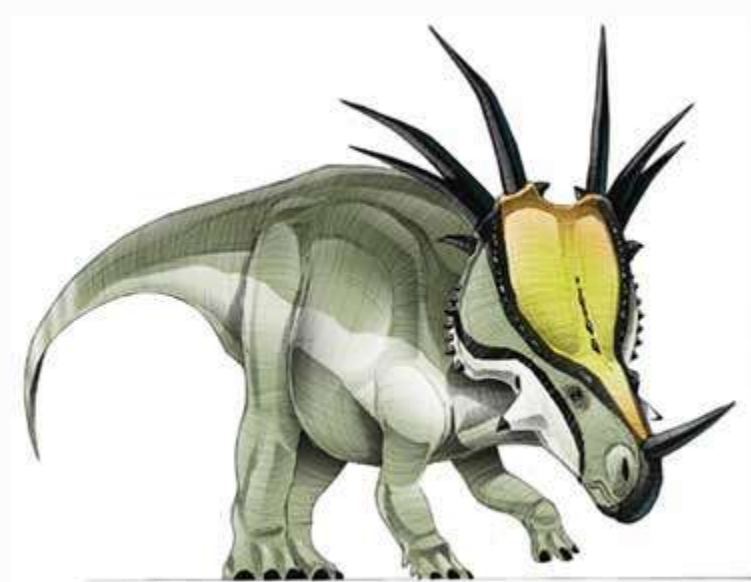




Styracosaurus



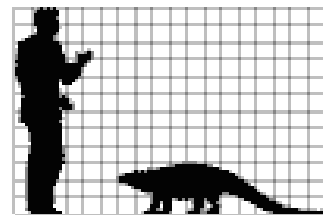
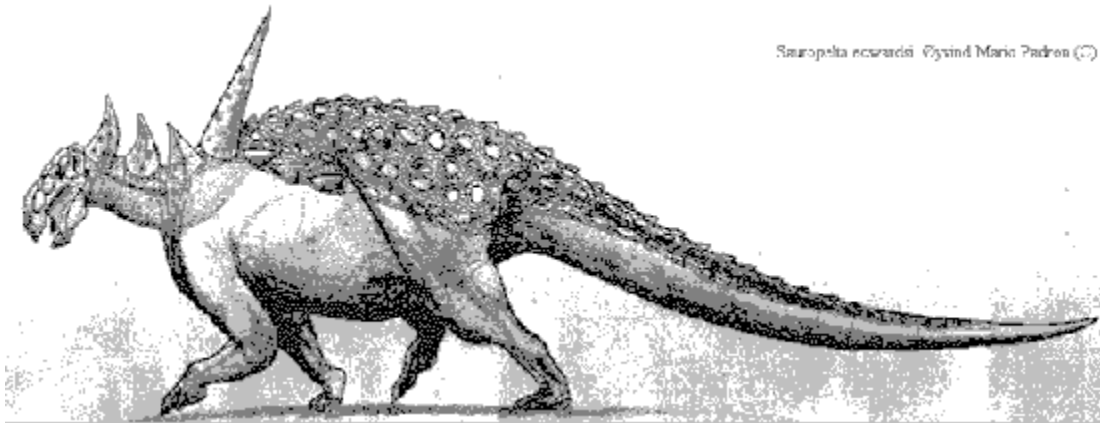
Styracosaurus

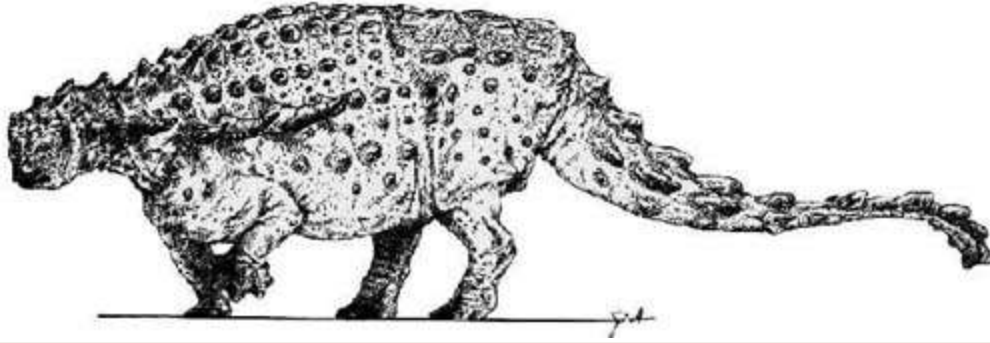


Struthiosaurus

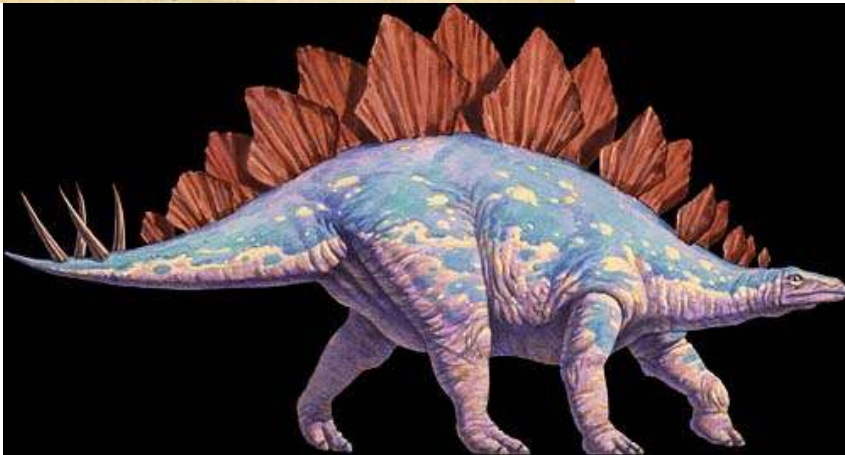
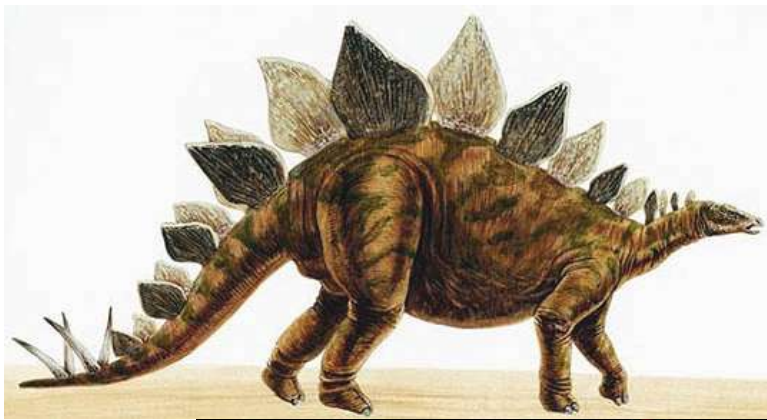


Sauropelta escarotzi Øyvind Martin Párron (©)



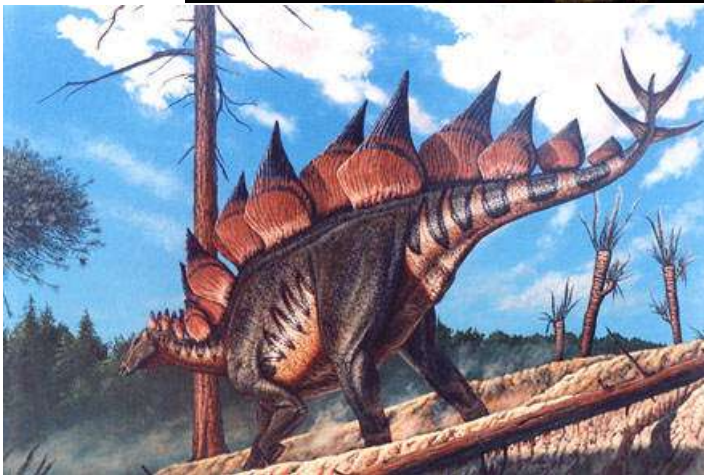
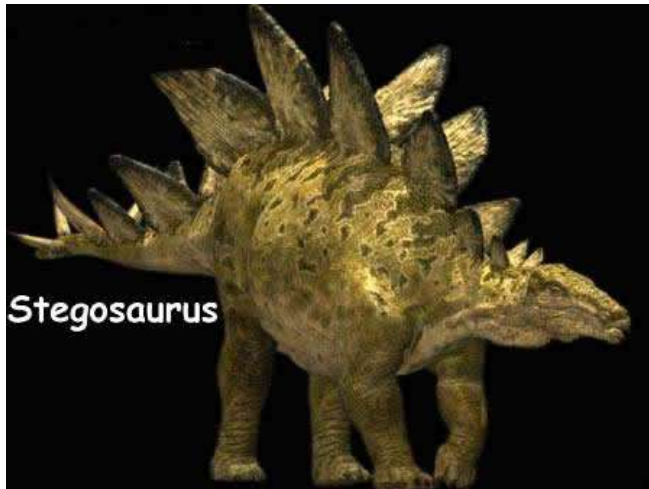
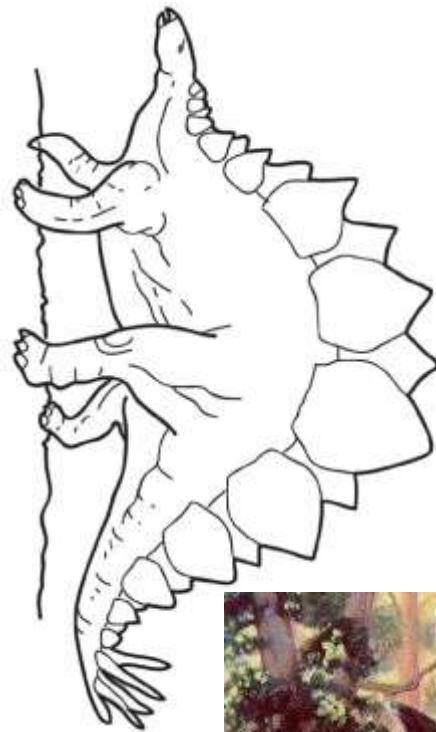
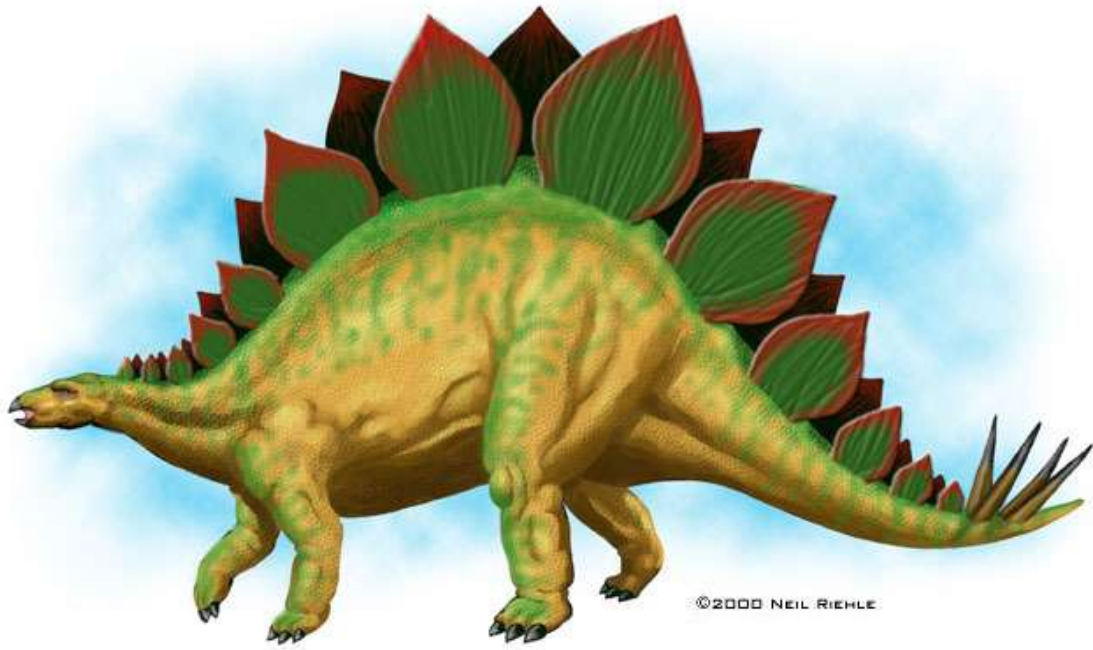


Struthiosaurus

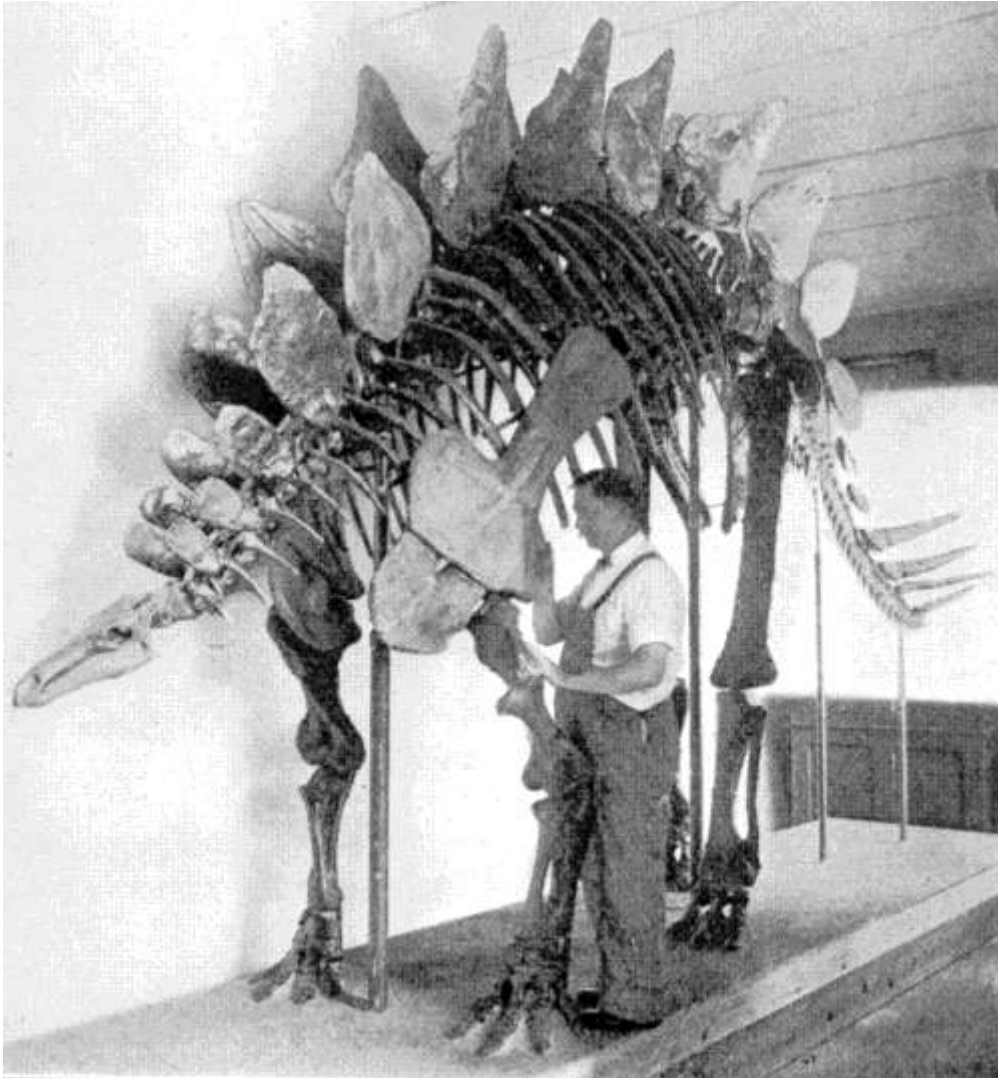
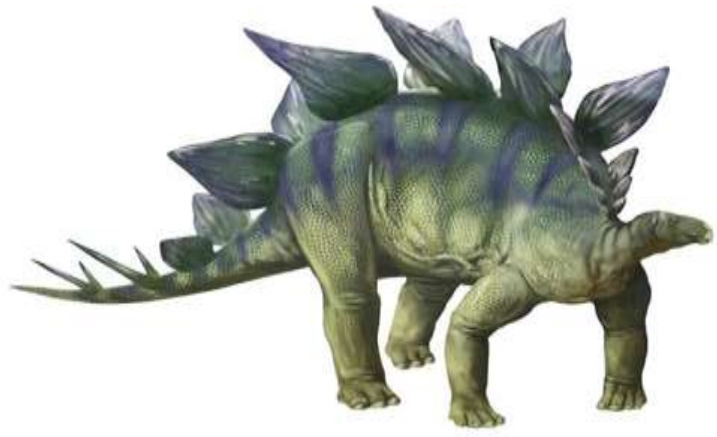
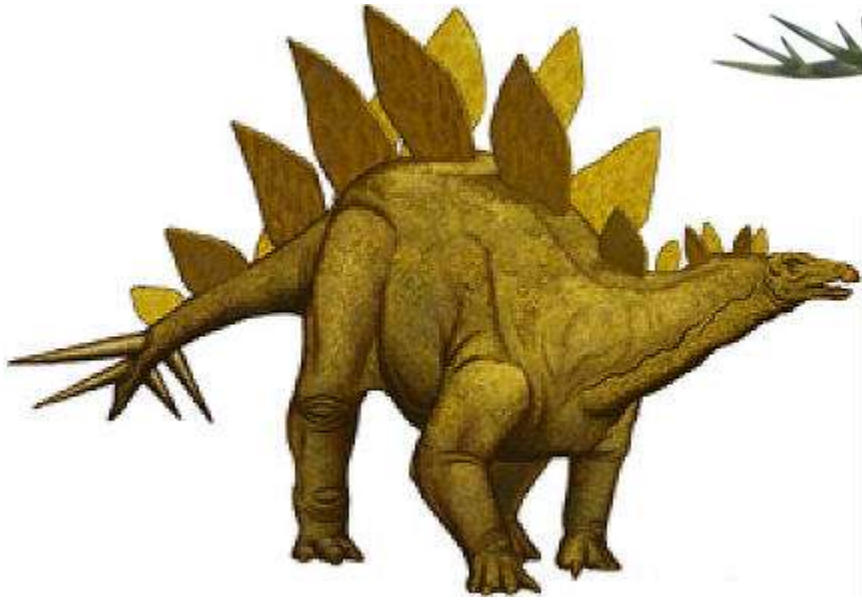


Stegosaurus

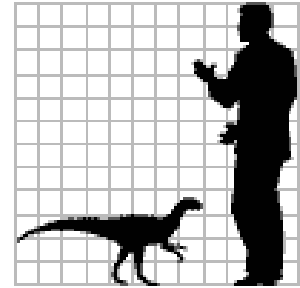
Stegosaurus



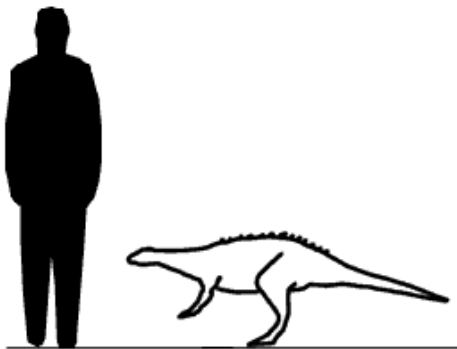
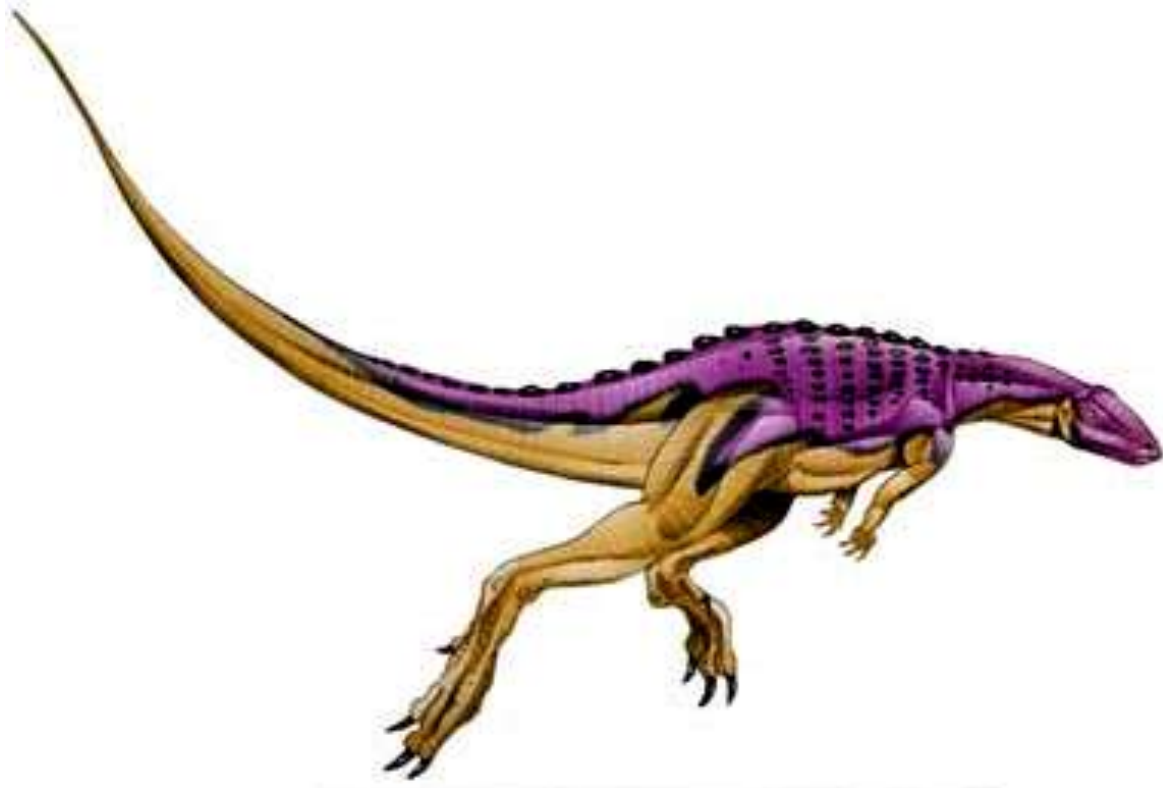
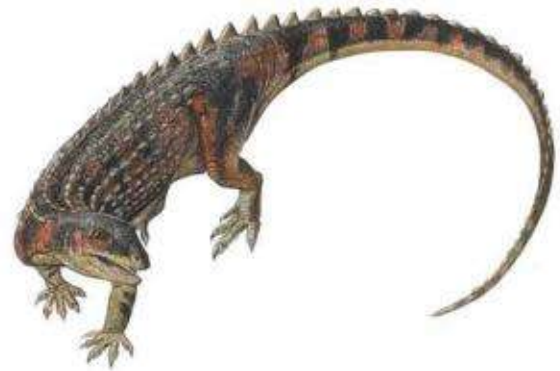
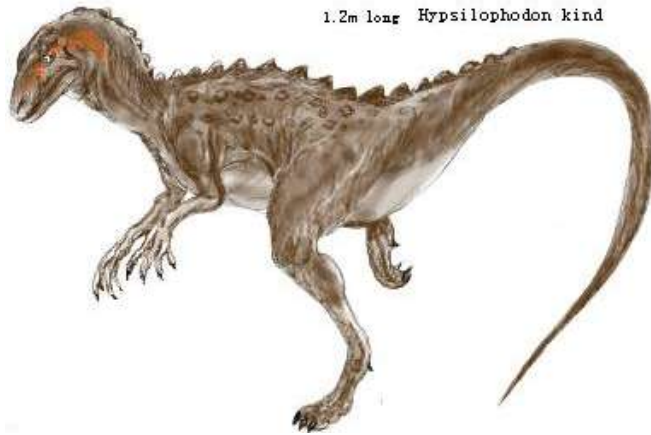
Stegosaurus

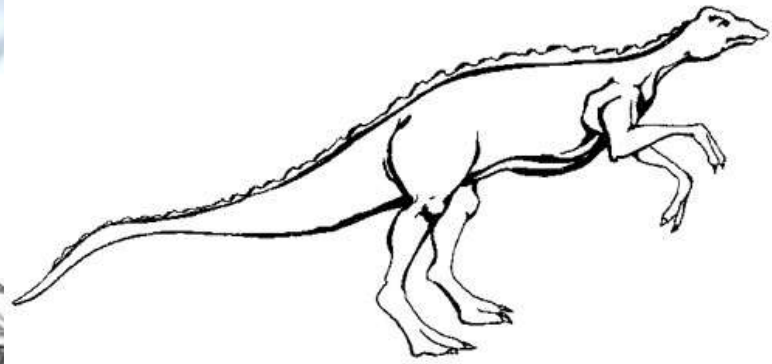
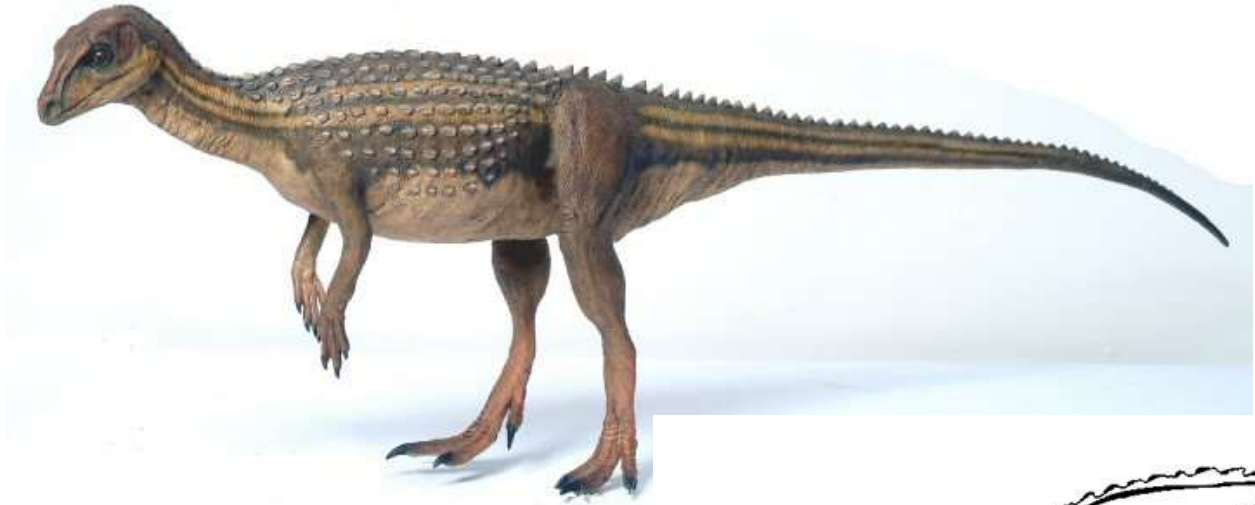


Scutellosaurus

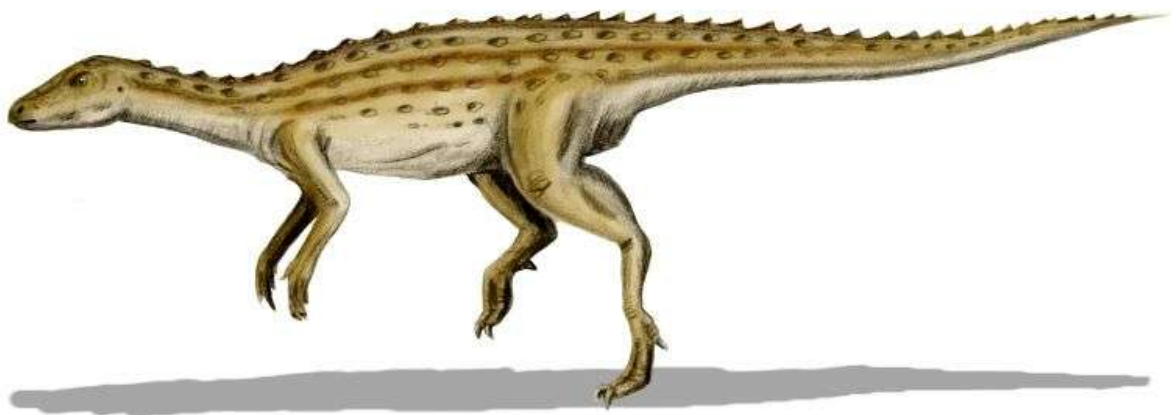
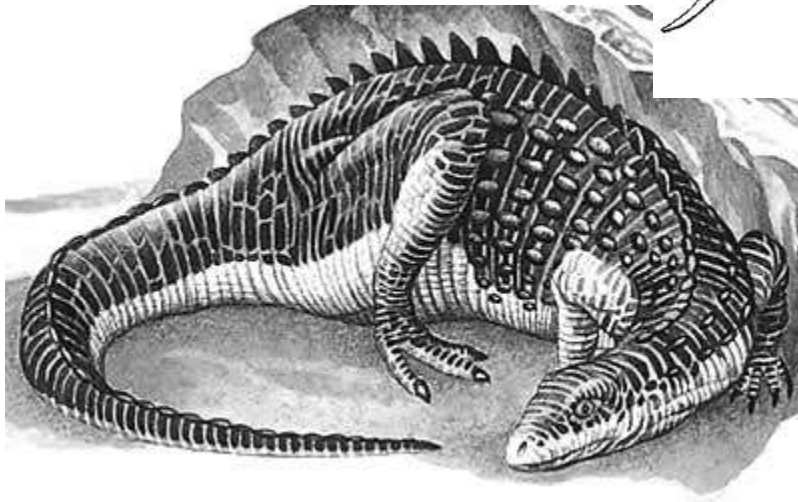


1.2m long Hysilophodon kind



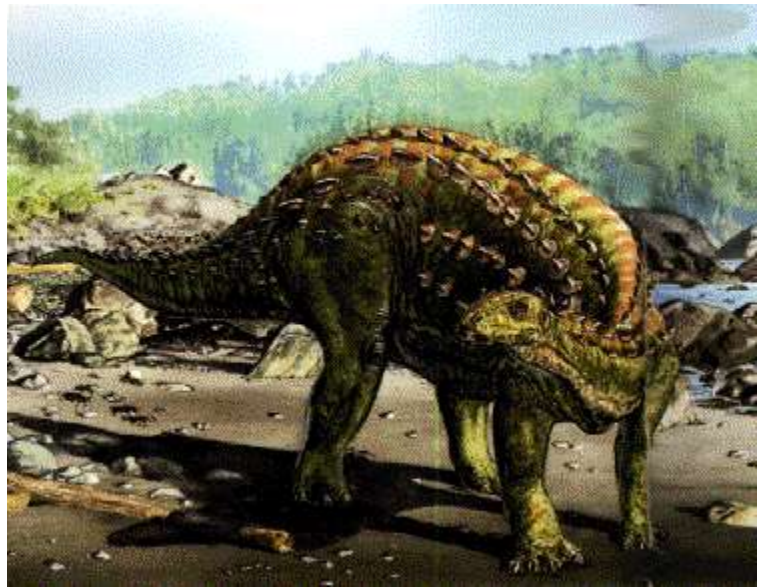
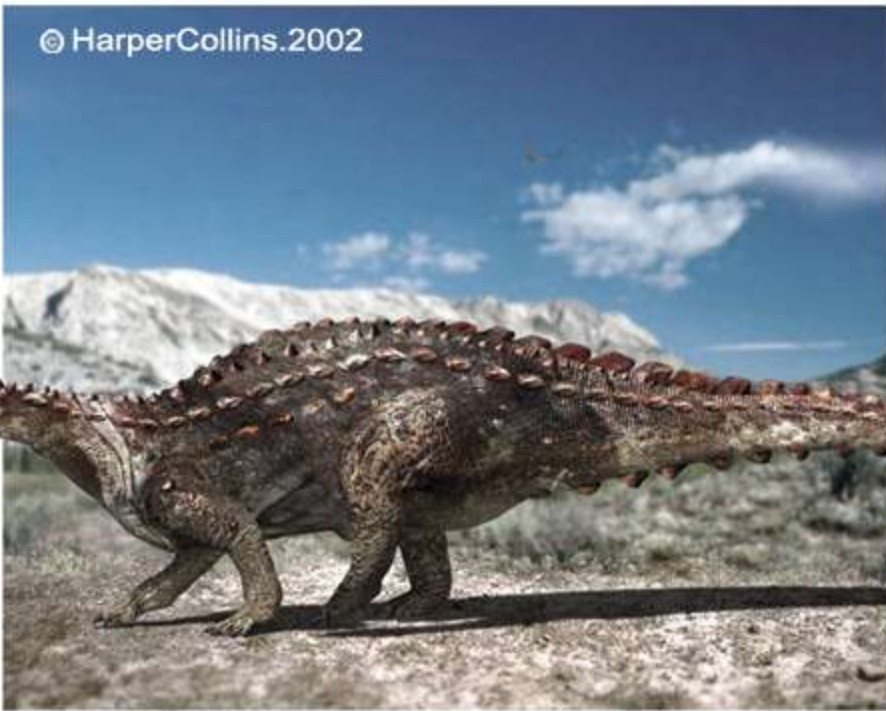


Scutellosaurus



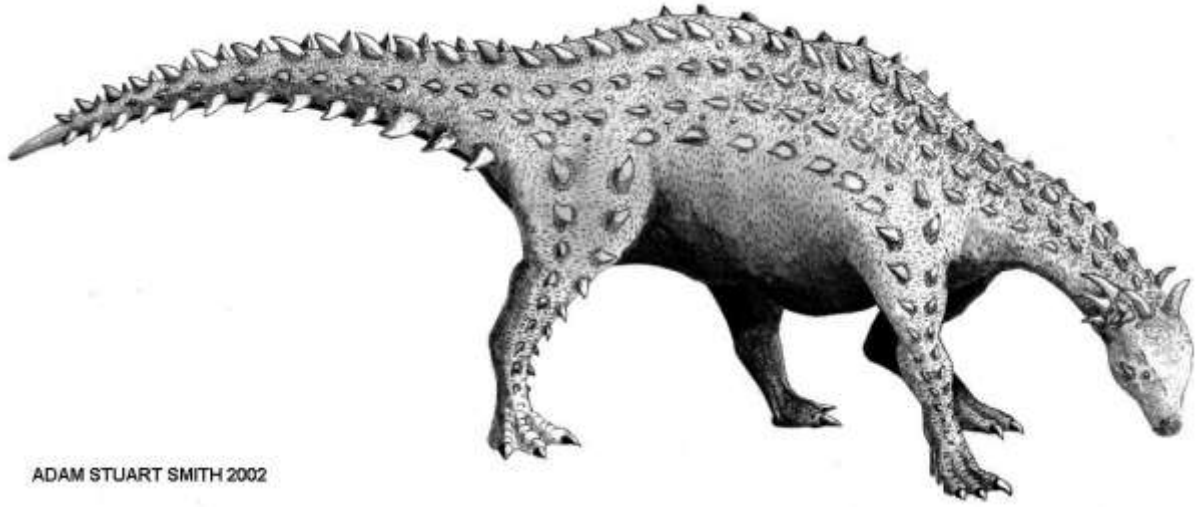
Scutellosaurus



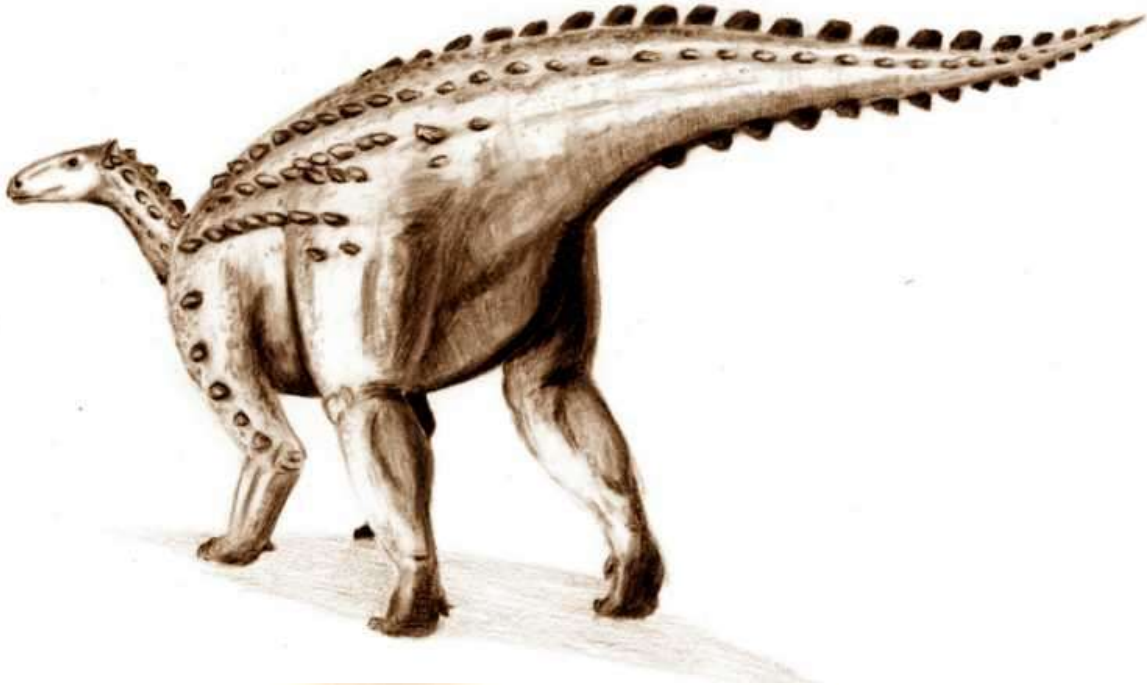


Scelidosaurus

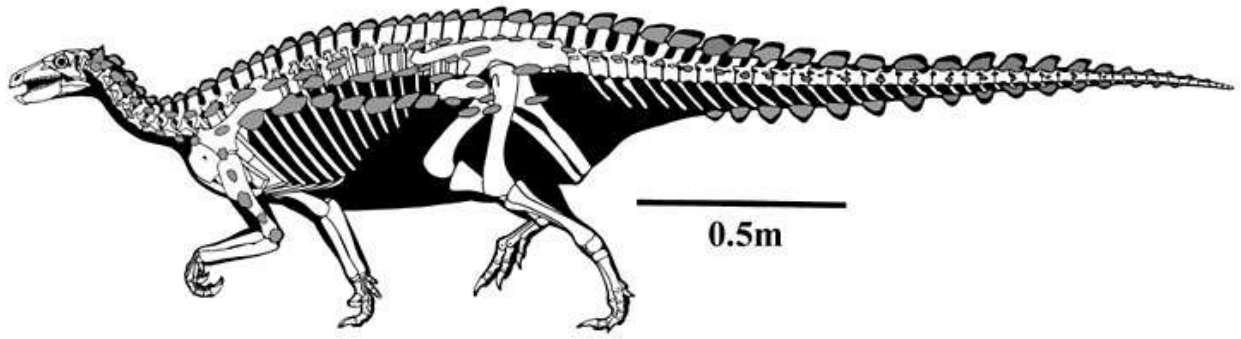




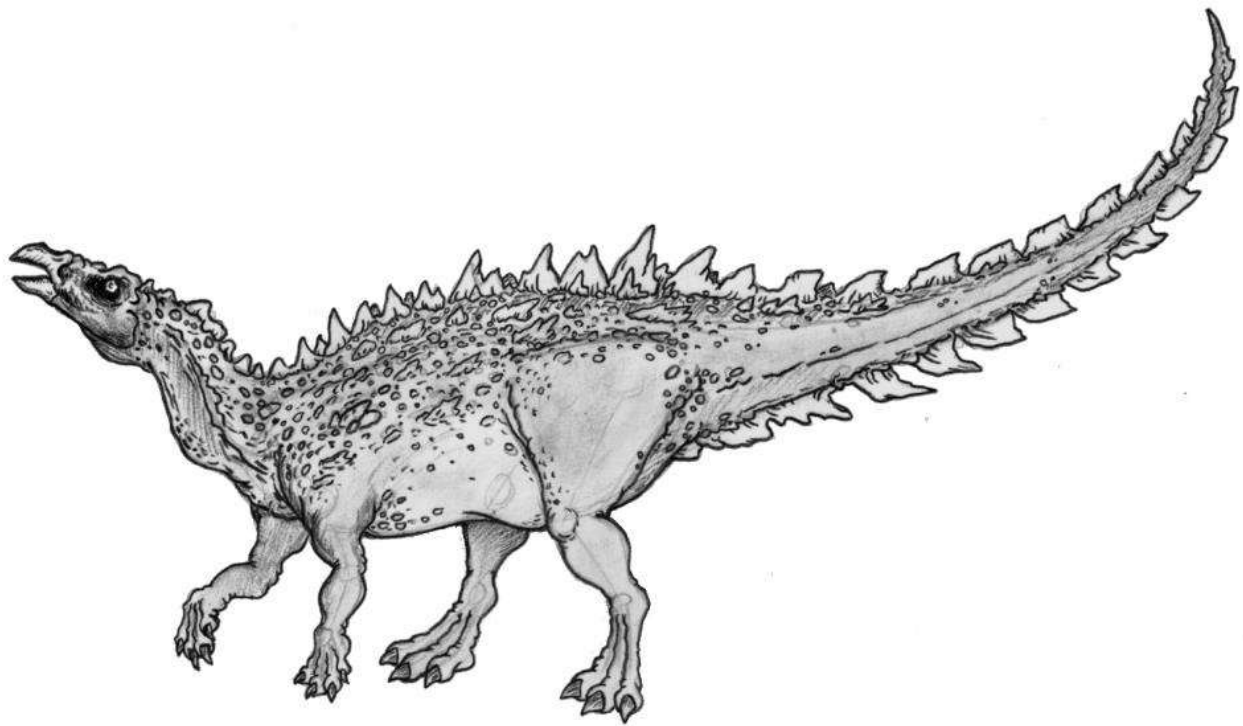
ADAM STUART SMITH 2002

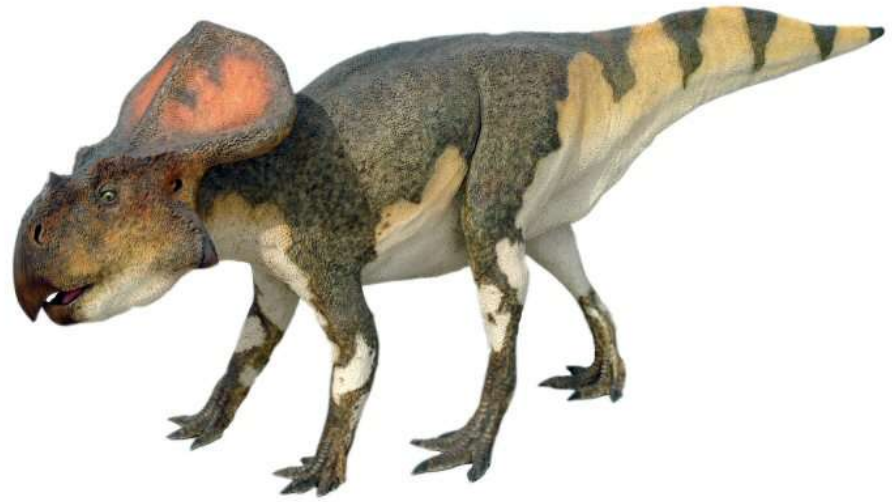


Scelidosaurus

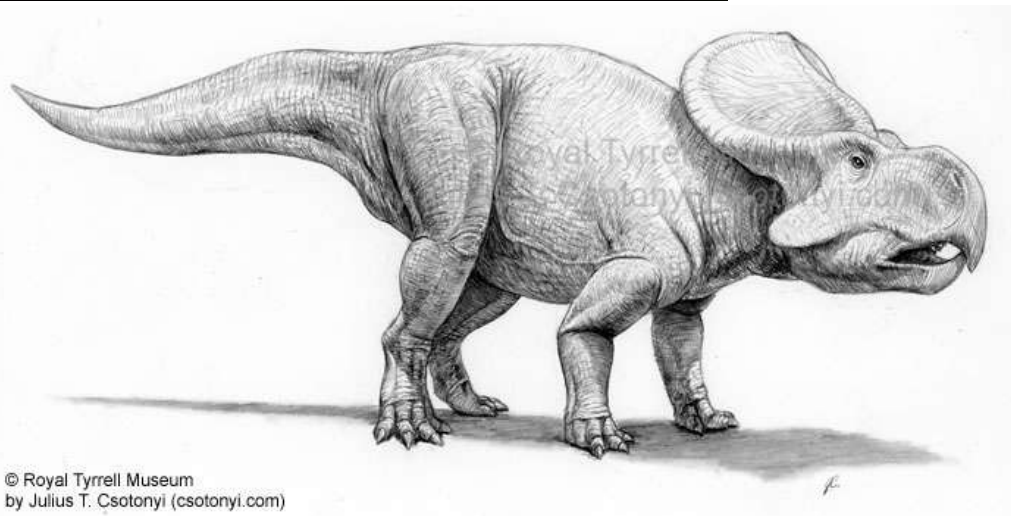


Scelidosaurus

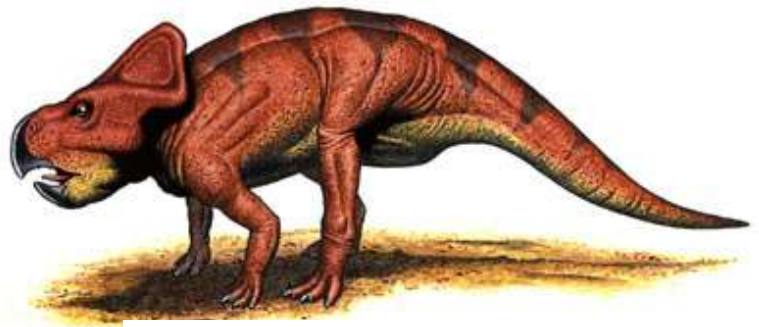
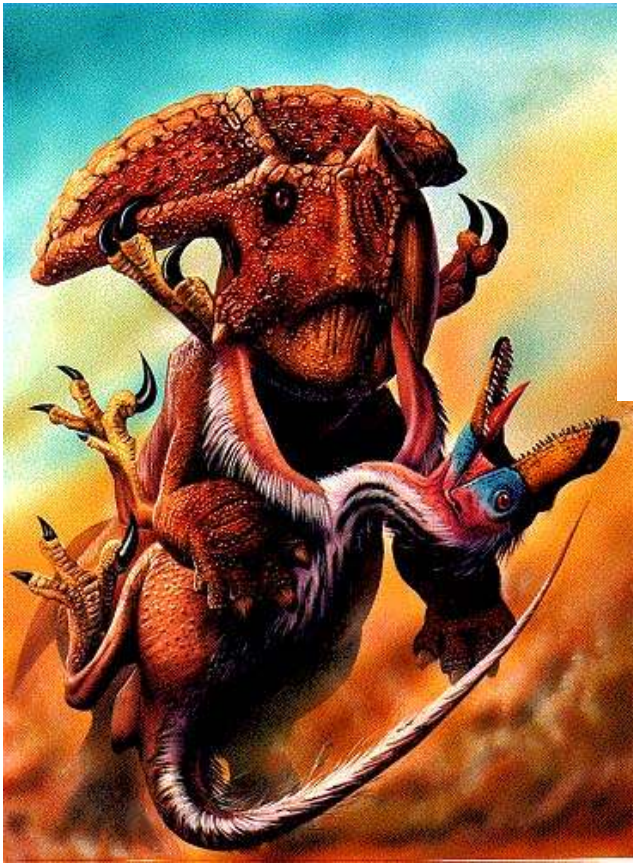
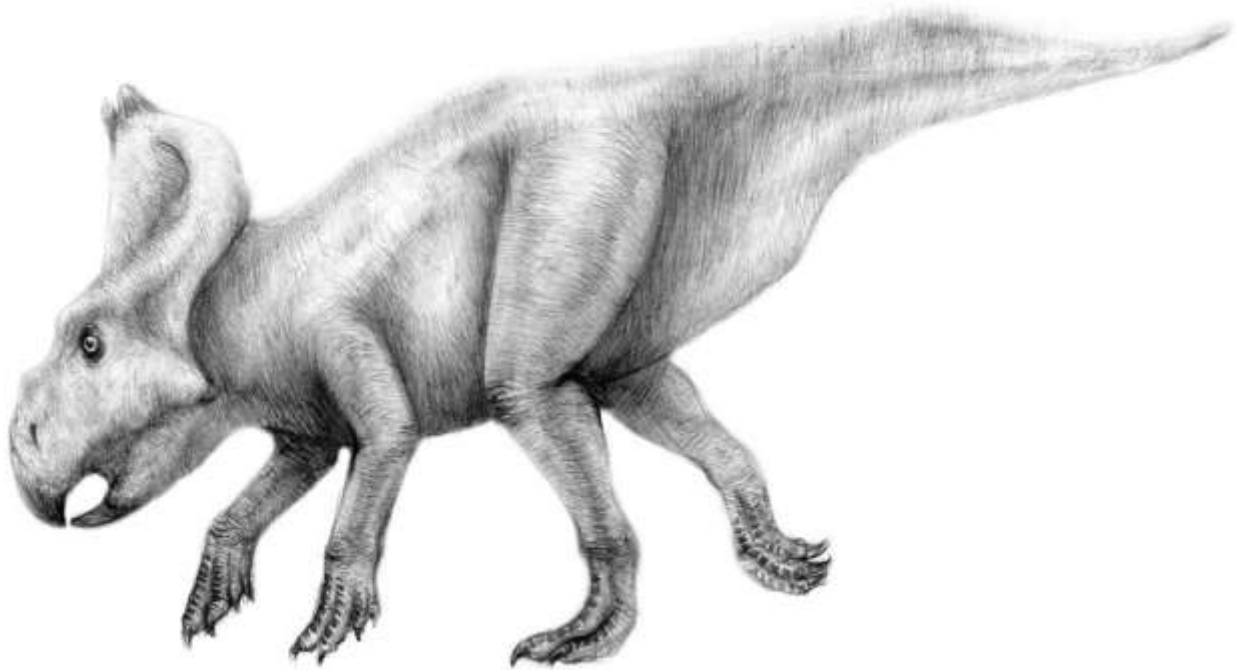




Protoceratops



© Royal Tyrrell Museum
by Julius T. Csotonyi (csotonyi.com)



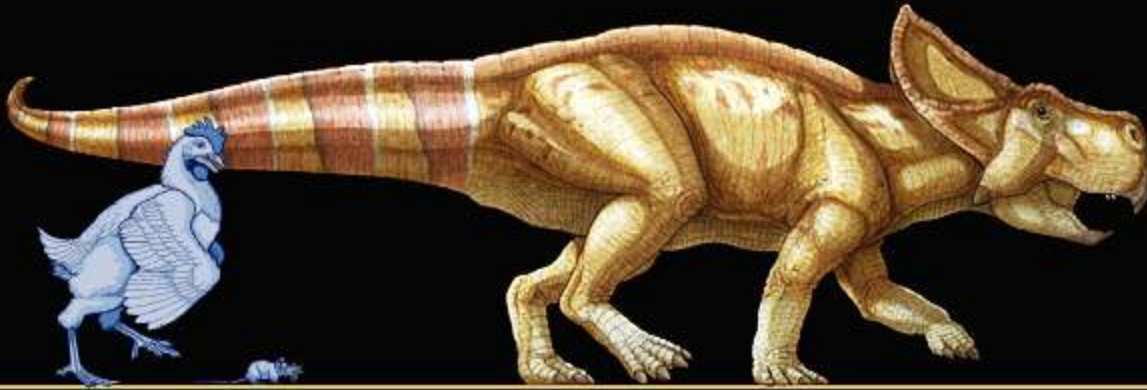
Protoceratops

PROTOCERATOPS

Dino Family Tree

1 metre

3 feet



Protoceratops (PROH-toh-SERRA-tops)
"first horned face"

Period: Late Cretaceous

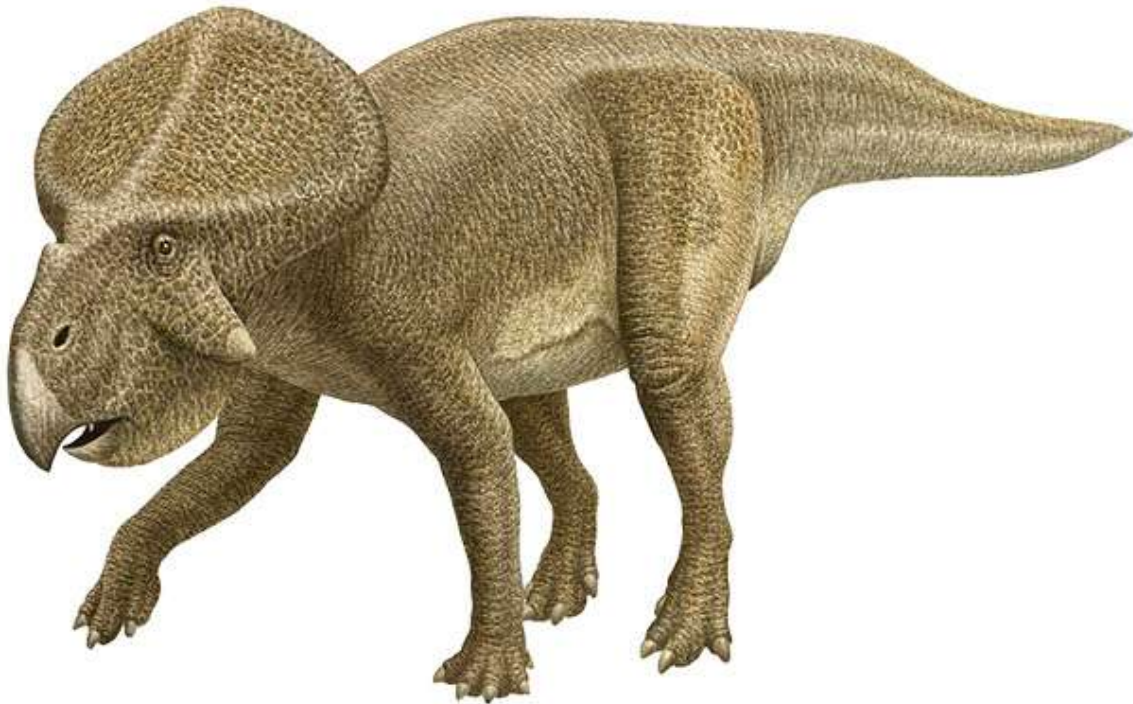
Length: 6 feet (1.8 metres)

Location: Asia

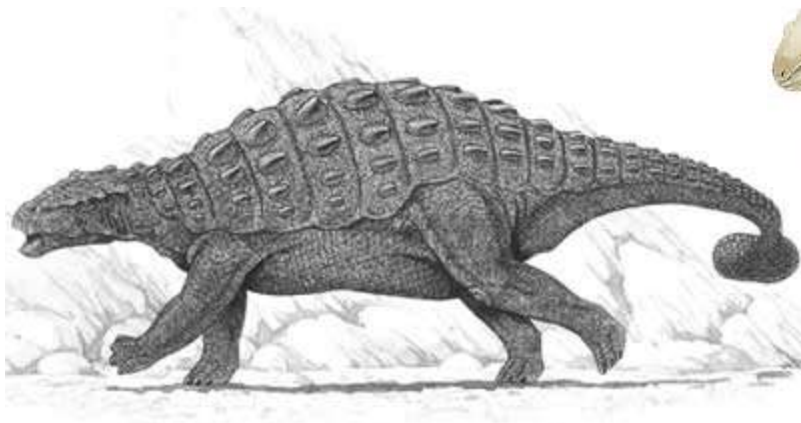
Solidly built, this herbivore had a parrotlike beak and bony frill.

©1998 Encyclopaedia Britannica, Inc.

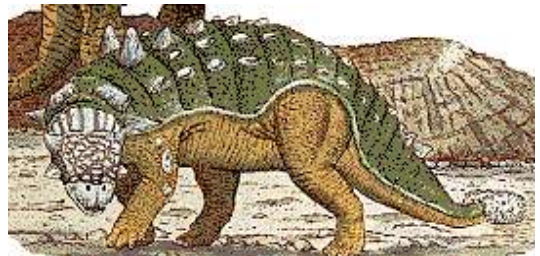
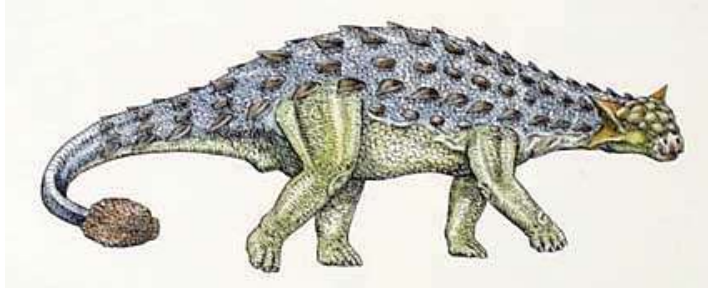
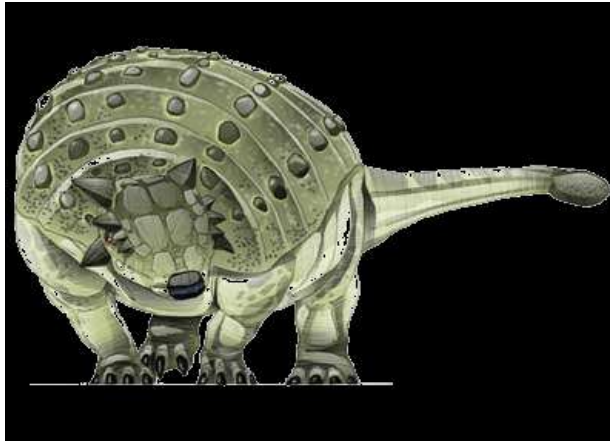
Protoceratops



© Keiji Terakoshi

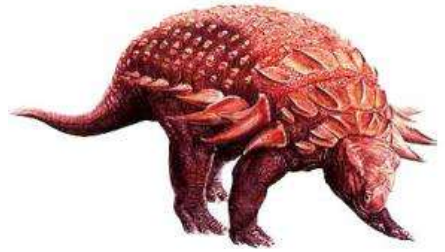
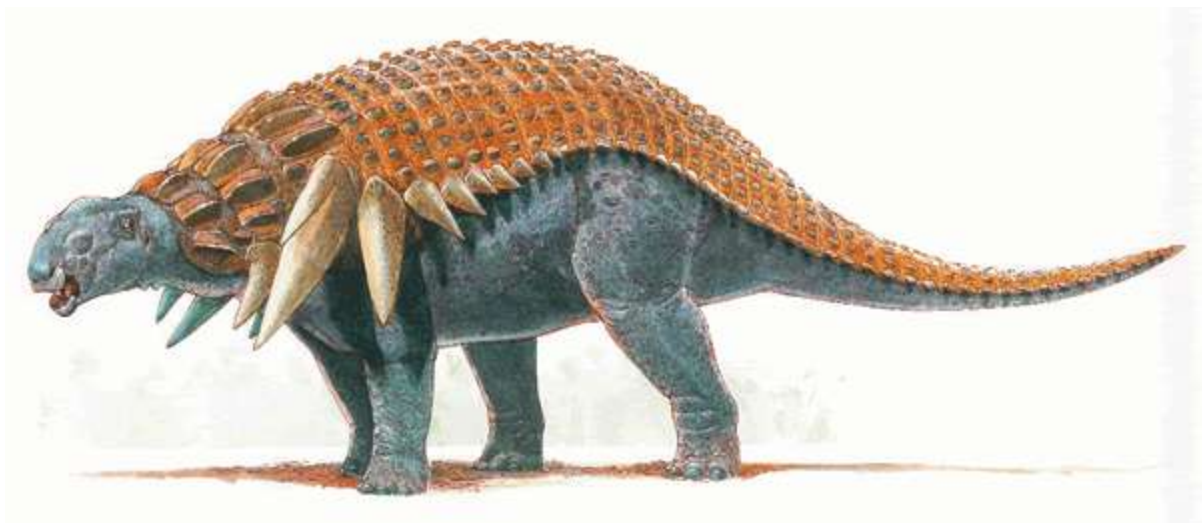


Pinacosaurus

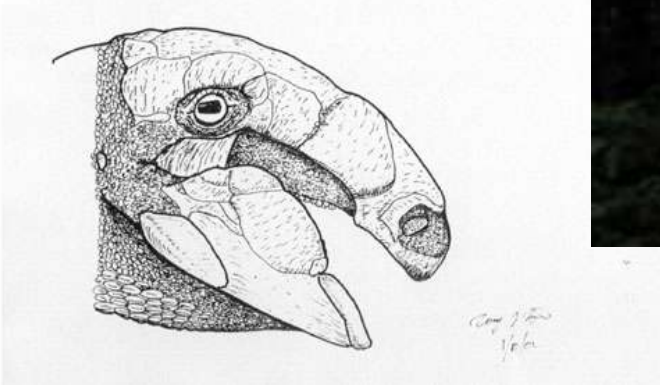
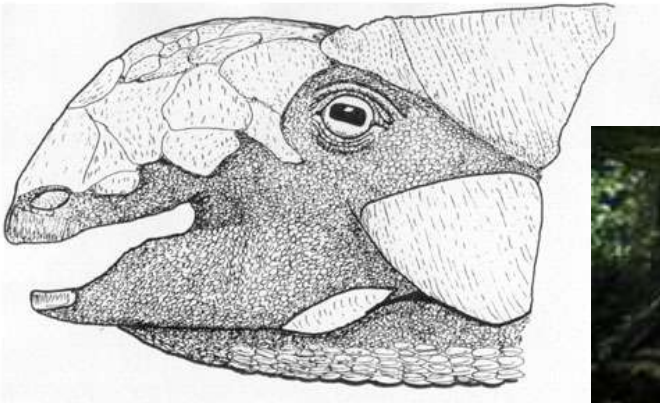


Pinacosaurus





Panoplosaurus



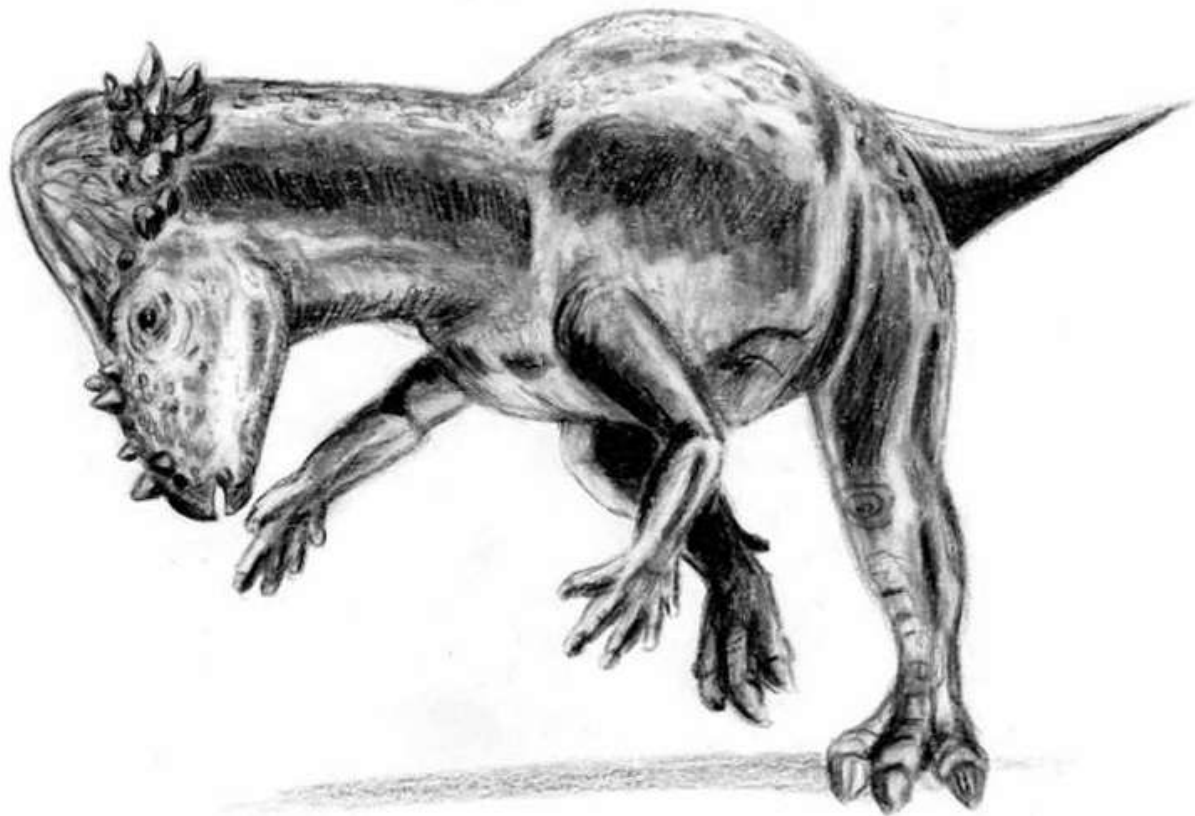
Top: Ankylosaurus

Bottom: Panoplosaurus






Pachycephalosaurus

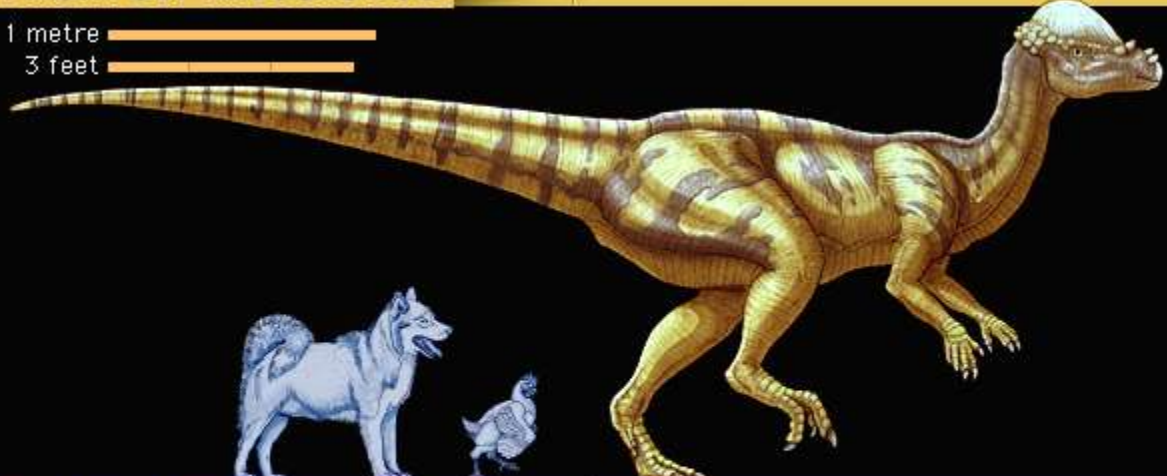




Pachycephalosaurus

PACHYCEPHALOSAURUS  Dino Family Tree

1 metre 
3 feet 



Pachycephalosaurus
(PAK-ee-SEF-a-loh-SORE-us)
"thick-headed lizard"
Period: Late Cretaceous
Length: 15 feet (4.6 metres)
Location: North America

An herbivore with a distinctive, thick, dome-shaped skull and a low spiky snout.

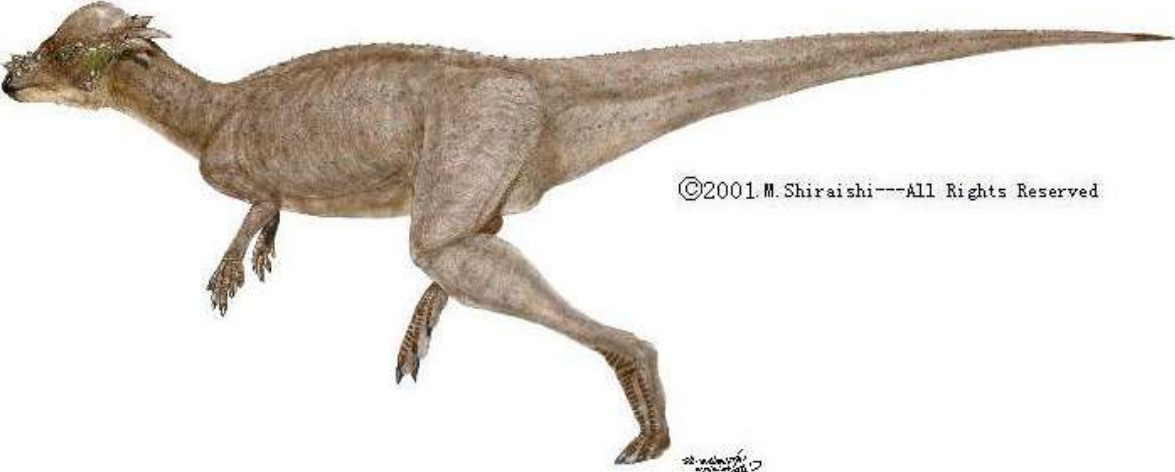
©1998 Encyclopaedia Britannica, Inc.



Felipe A. Elias - © Copyright 2003 - All rights reserved



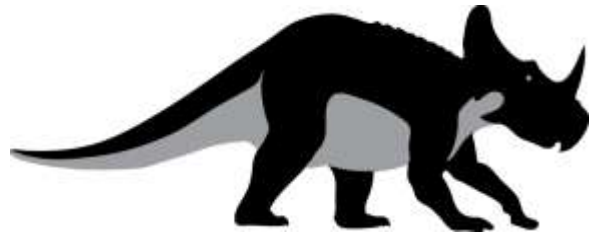
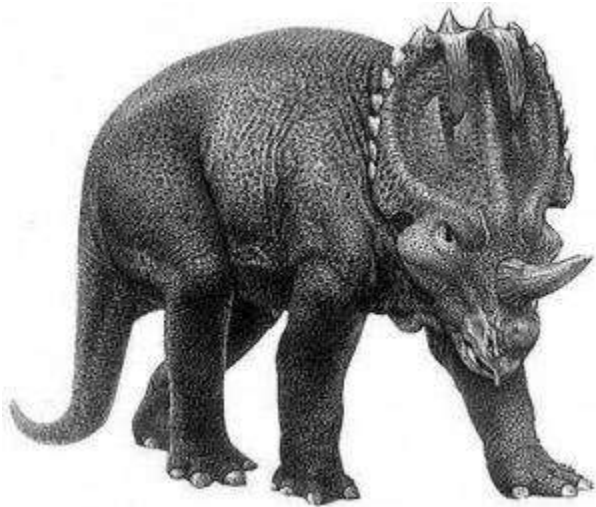
Pachycephalosaurus

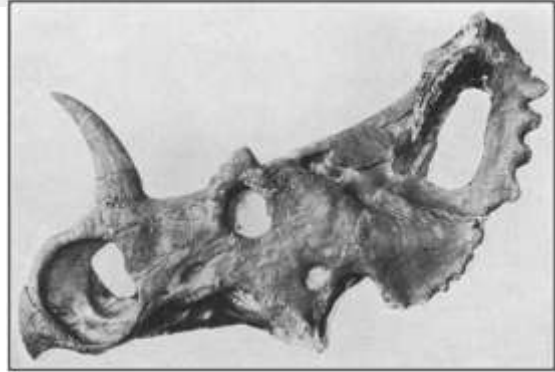
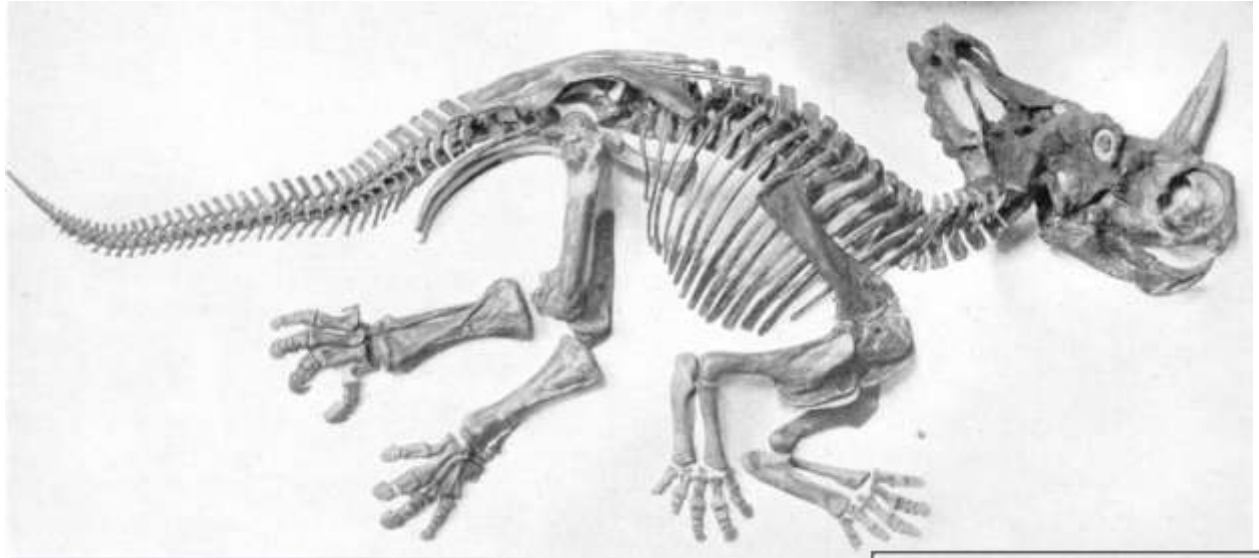


©2001 M. Shiraishi---All Rights Reserved

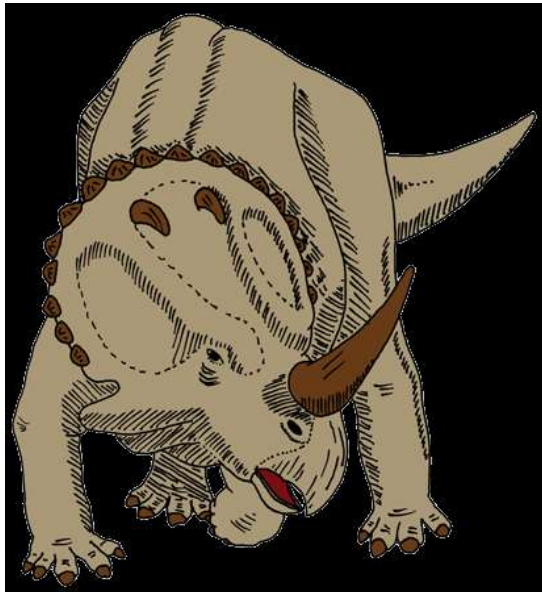


Monoclonius





Monoclonius

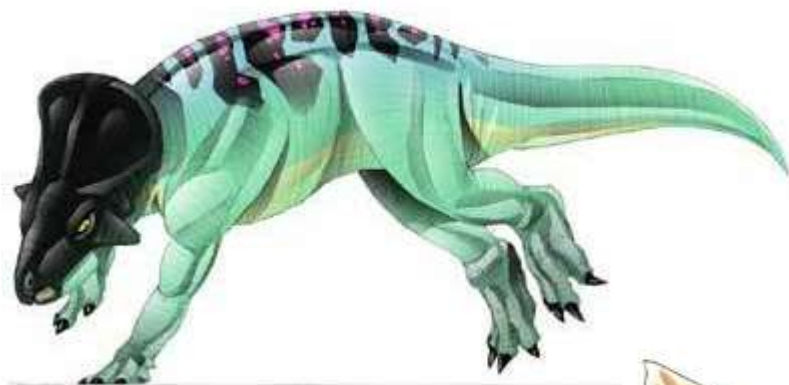




Monoclonius

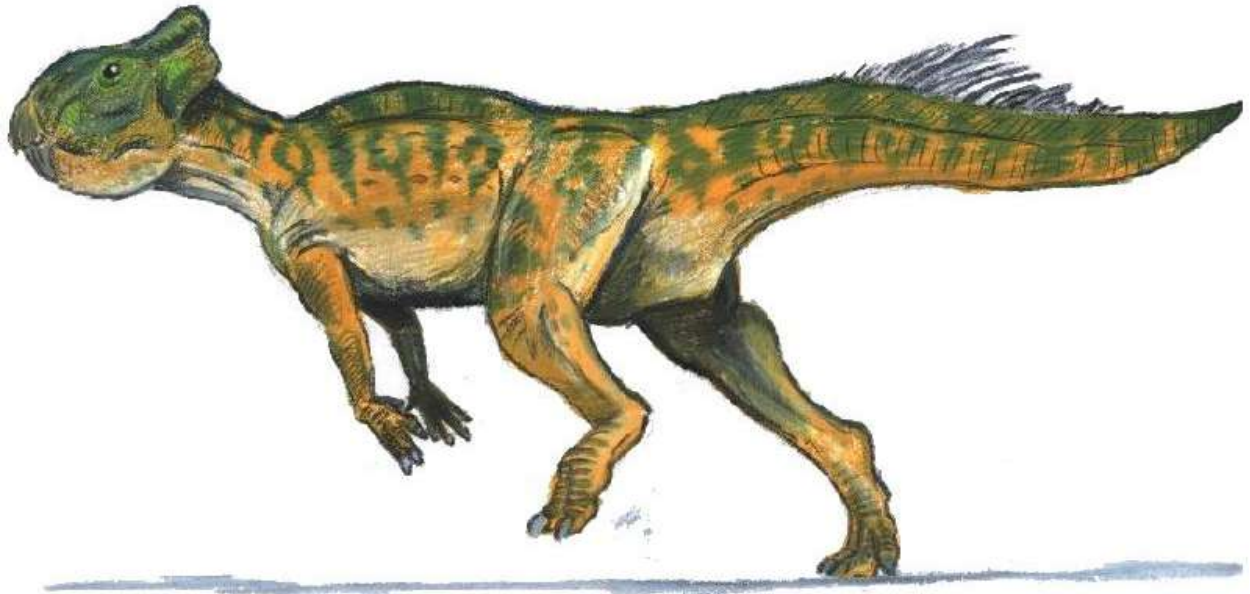


Leptoceratops

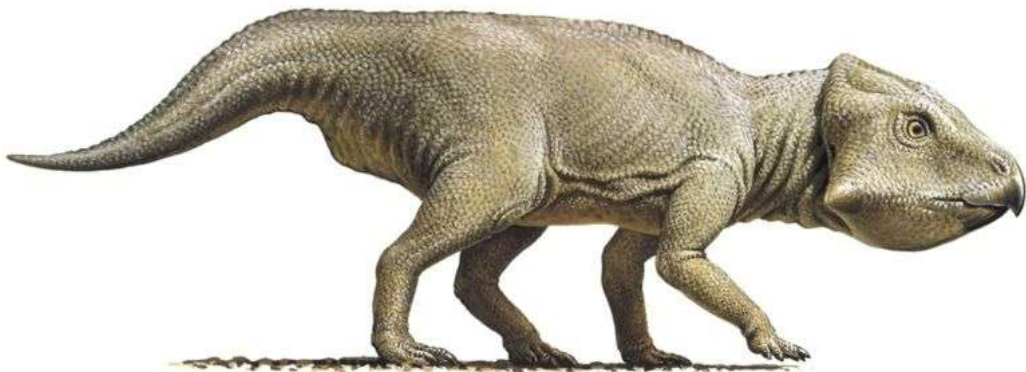
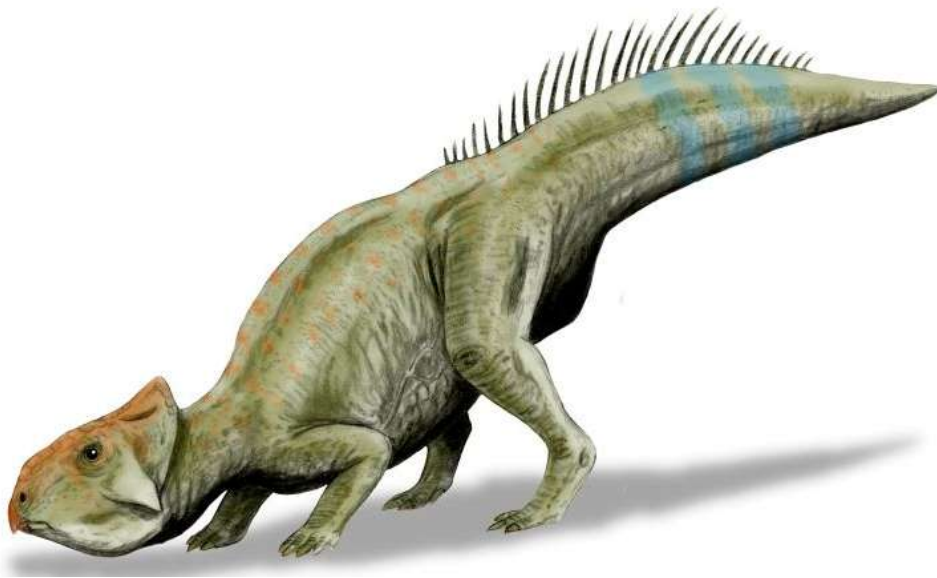


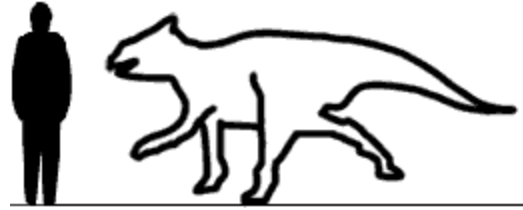
Leptoceratops gracilis



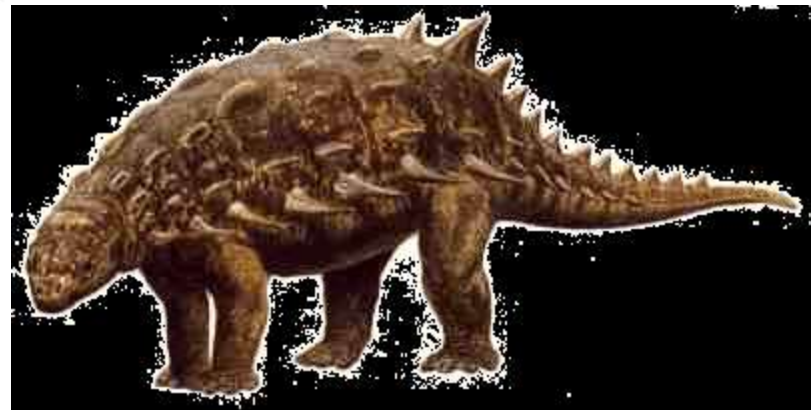
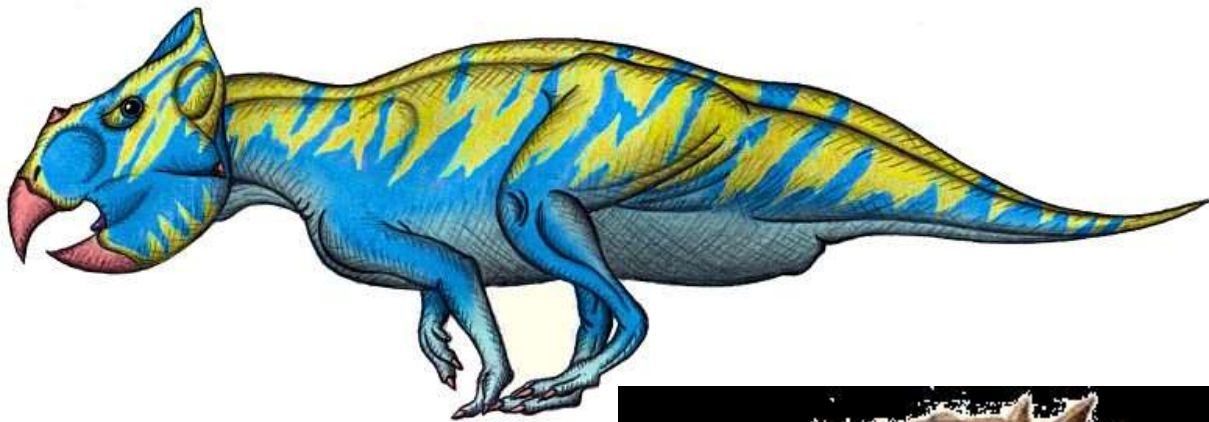


Leptoceratops

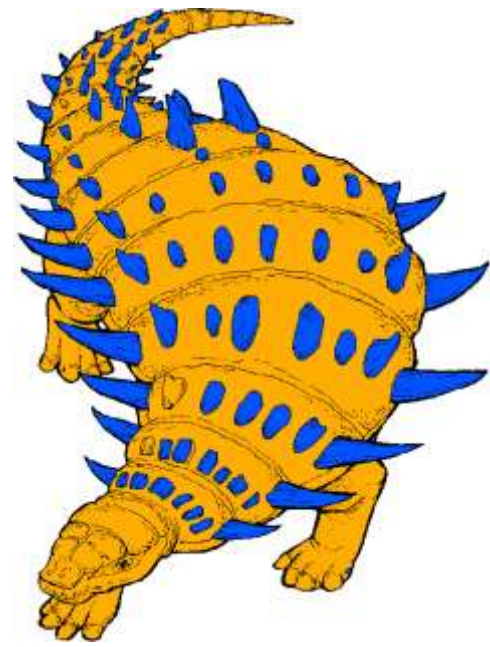
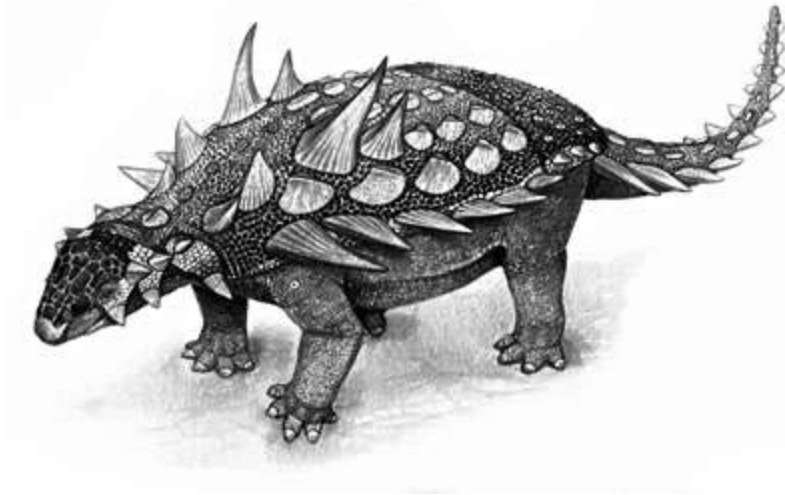




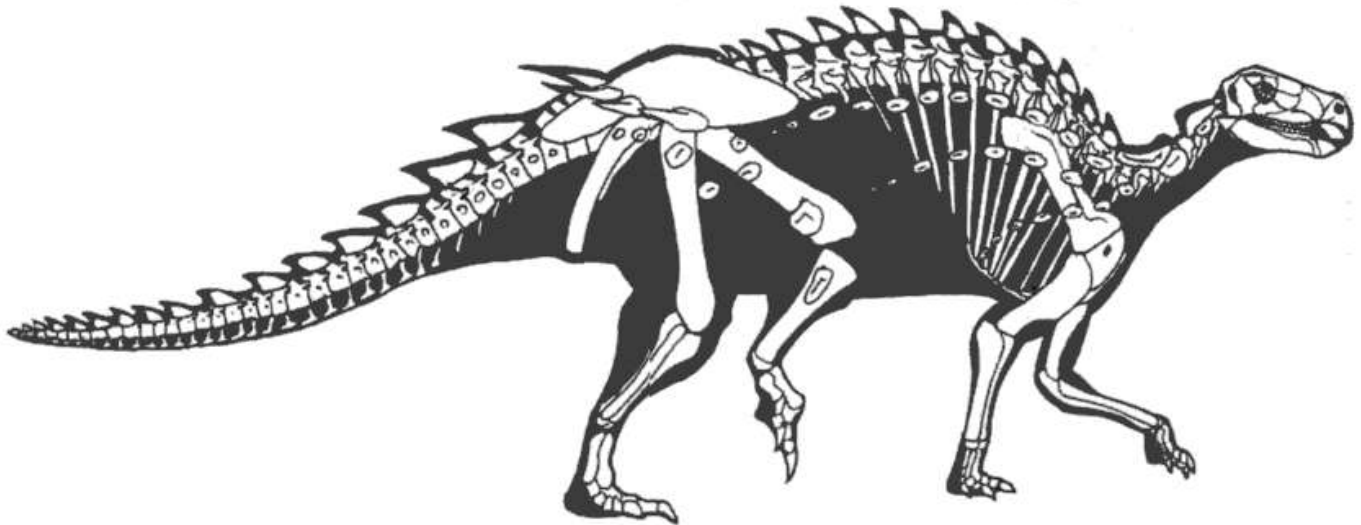
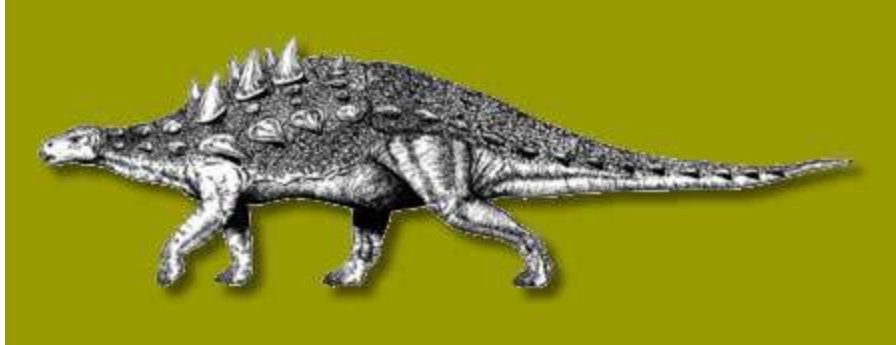
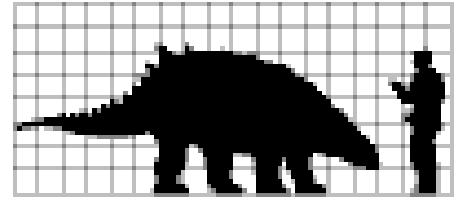
Leptoceratops

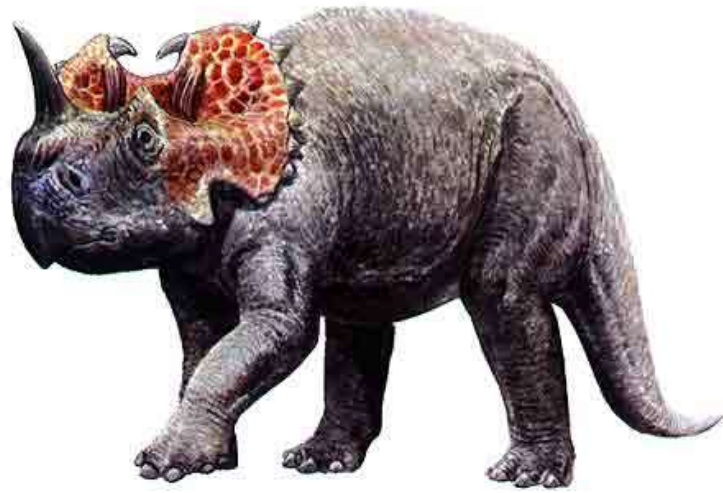
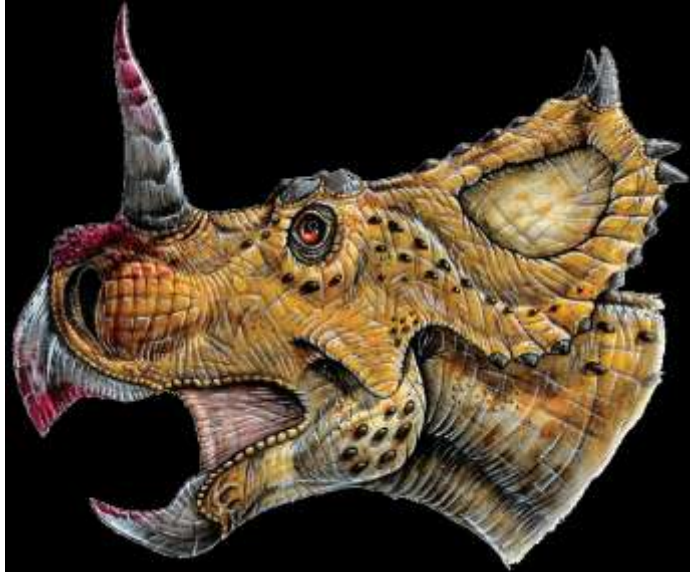


Hylaeosaurus



Hylaeosaurus

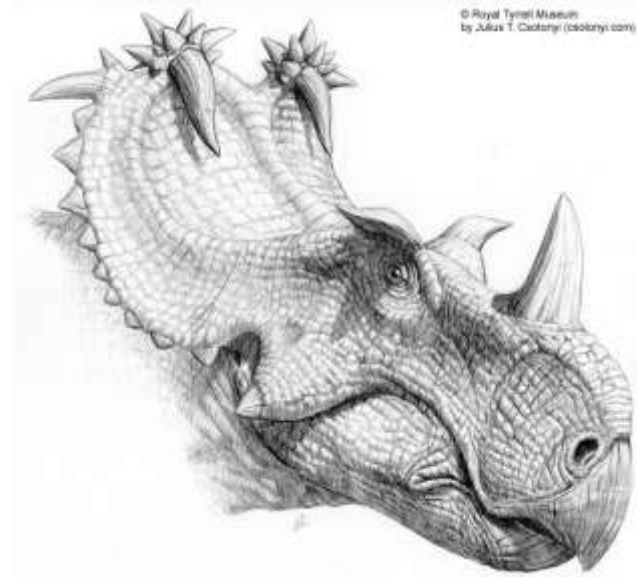




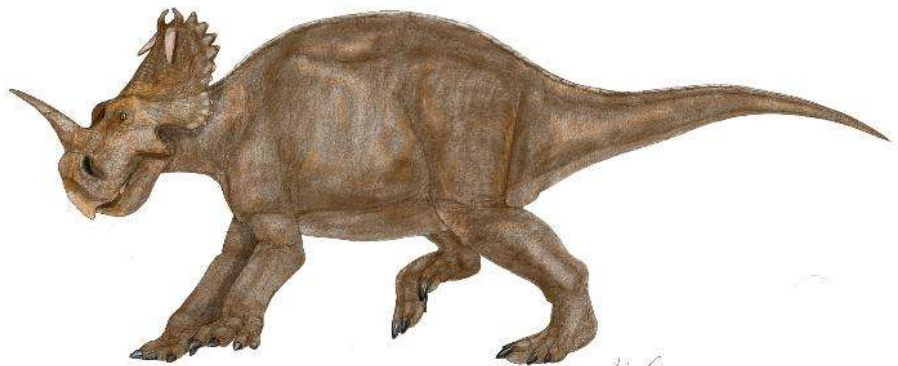
Centrosaurus

© Royal Tyrrell Museum
by Julius T. Csotonyi



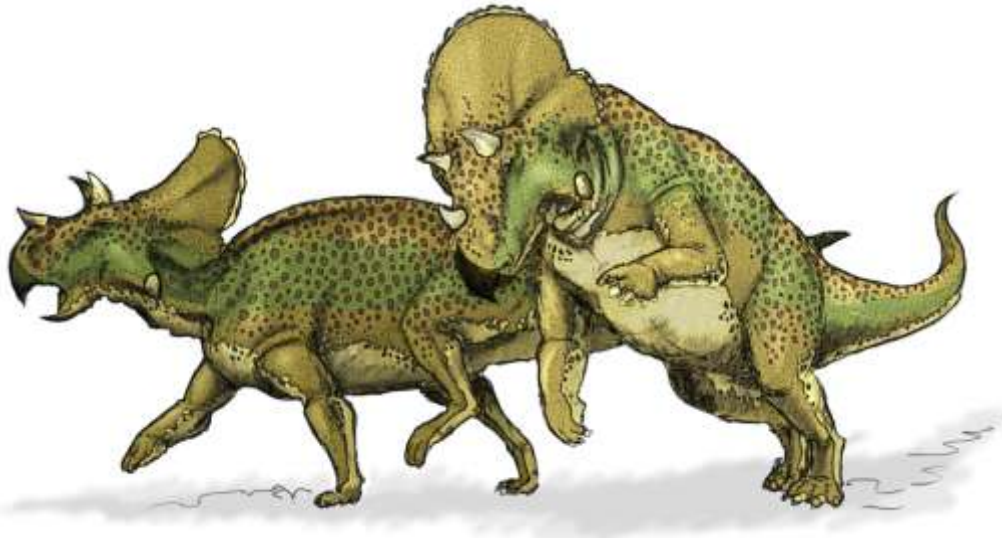


Centrosaurus





Centrosaurus (above)

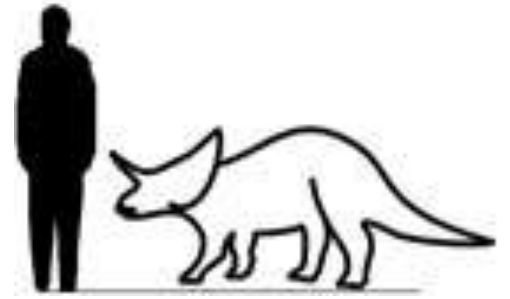
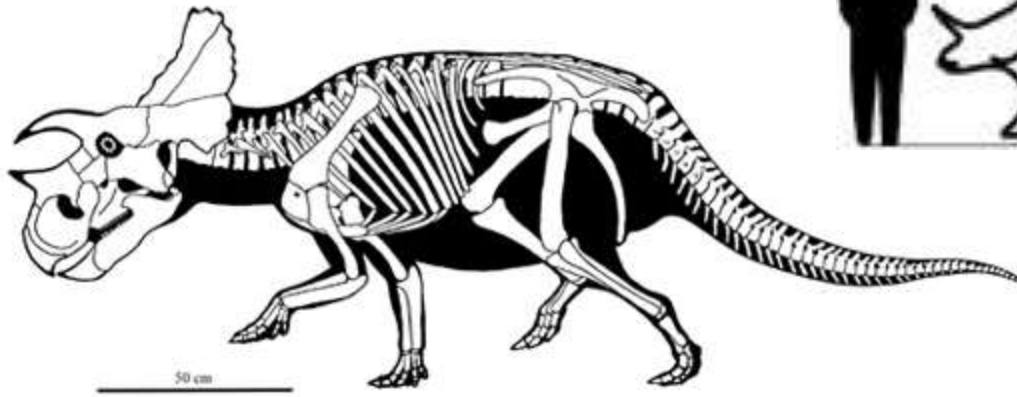


Avaceratops



Illustration by Robert F. Walters

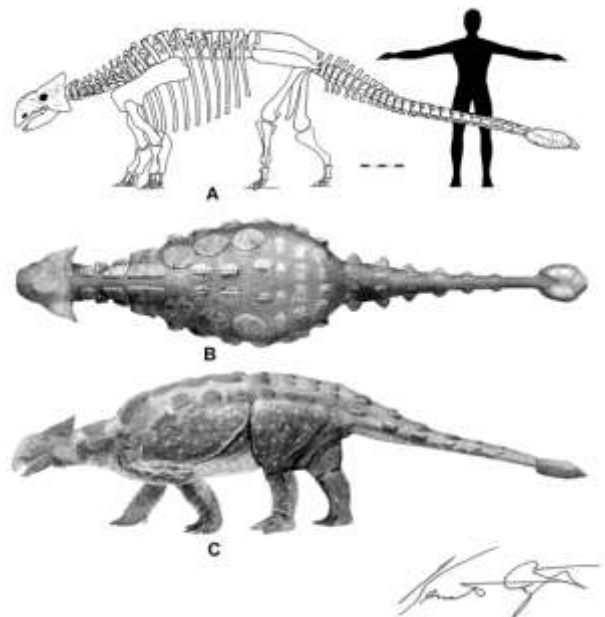


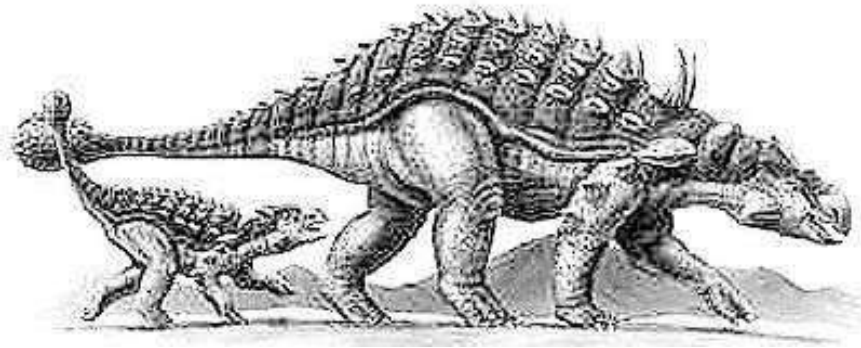


Avaceratops (above)



Ankylosaurus





Ankylosaurus

